



Hampstead High Street

London, NW3

£5,000 per month
(£1,153.85 per week)

VIDEO TOUR AVAILABLE. Set in an award winning development is this magnificent 2 double bedroom 2nd floor apartment which has been specified to a superb standard. The apartment benefits from an abundance of natural light, high ceilings, beautiful wood floors, double glazing and views across Hampstead. The property is situated close to Hampstead Station(Underground) in the heart of Hampstead Village. Accommodation comprises an exceptional and generous living room, open plan fully fitted Siemens kitchen, master bedroom with fitted wardrobes and en-suite shower room, further double bedroom, storage, family bathroom. Sole Agent.

CHESTERTONS



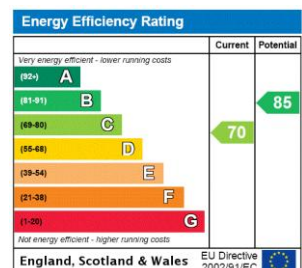
Hampstead High Street

London, NW3

- A Magnificent 2nd Floor Apartment
- 2 Bedrooms, 2 Bathrooms, Reception, Open Plan Fully Fitted Siemens Kitchen
- Exceptionally High Ceilings, Wood Floors Throughout, Double Glazing, Views Across Hampstead
- Excellent Location in the Heart of Hampstead Village



Deposit Required: £6,923.08
Local Authority: London Borough Of Camden
Council Tax Band: E
EPC Rating: C
Unfurnished

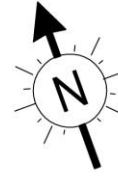


Chestertons Hampstead Lettings

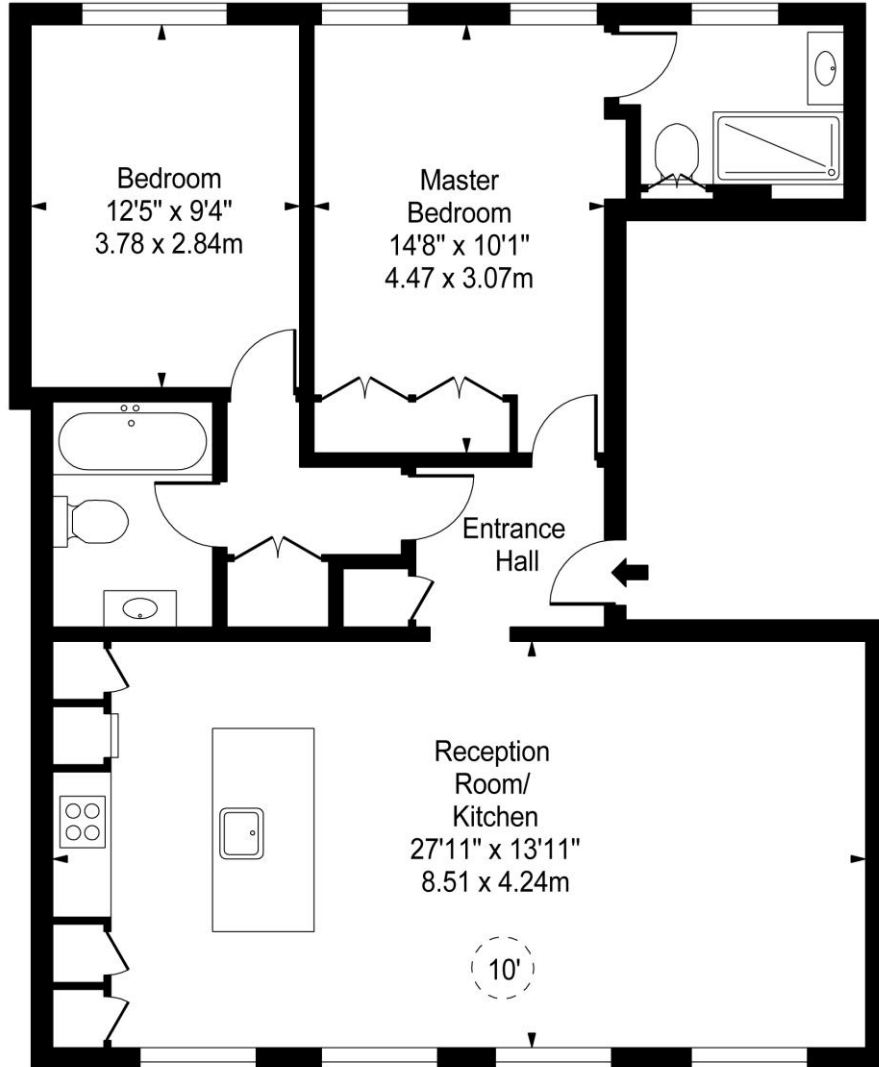
55-56 Hampstead High Street
 Hampstead
 London
 NW3 1QH
 hampsteadlettingsusers@chestertons.co.uk
 02077941125
 chestertons.co.uk

Additional tenant charges apply (fees apply to non-AST tenancies only)
 Tenancy Agreement Fee: £300
 References per Tenant/Guarantor: £60
 Inventory check (approx. £100 – £250 inc. VAT)
chestertons.co.uk/property-to-rent/applicable-fees

Hampstead High Street, Hampstead, NW3



 - Ceiling Height



Second Floor

Approx Gross Internal Area **855 Sq Ft - 79.43 Sq M**

For Illustration Purposes Only - Not To Scale

www.goldlens.co.uk

Prepared for Chestertons

Ref. No. 013637JL

