



HW

ESTATE AGENTS

Denmark Villas, Hove
£450,000



Denmark Villas

Hove, Hove

Elegant two-bed Victorian semi with open plan living, spiral staircase, modern kitchen, private patio, stylish features, and prime location near shops, parks, and transport.

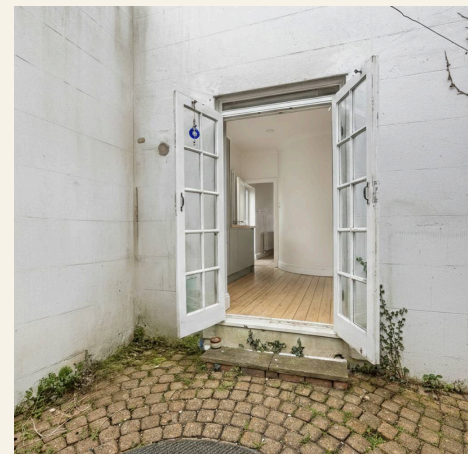
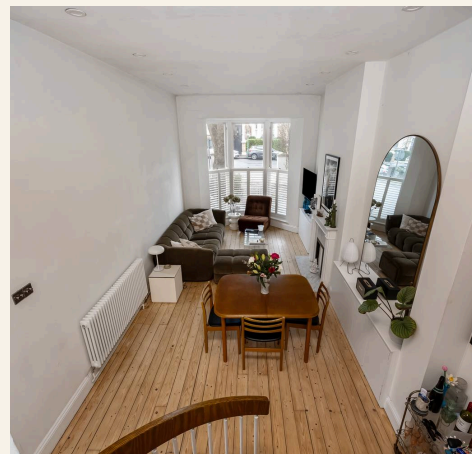
Council Tax band: TBD

Tenure: Leasehold

EPC Energy Efficiency Rating: D

EPC Environmental Impact Rating:

- Modern kitchen with integrated appliances
- Open plan living area
- Elegant spiral staircase
- Large bay windows
- Private outdoor courtyard
- Period Victorian architecture
- Modern walk-in shower bathroom
- Central location with private side access
- Chain Free



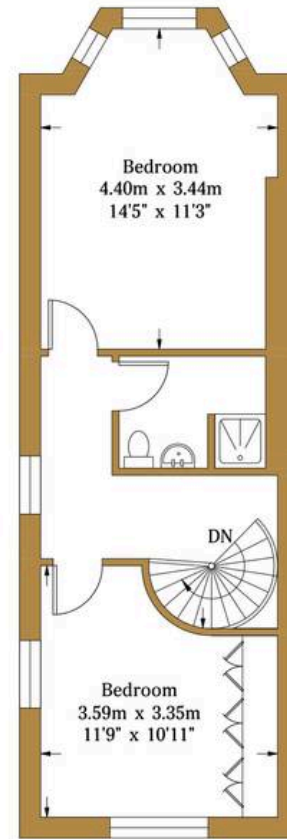
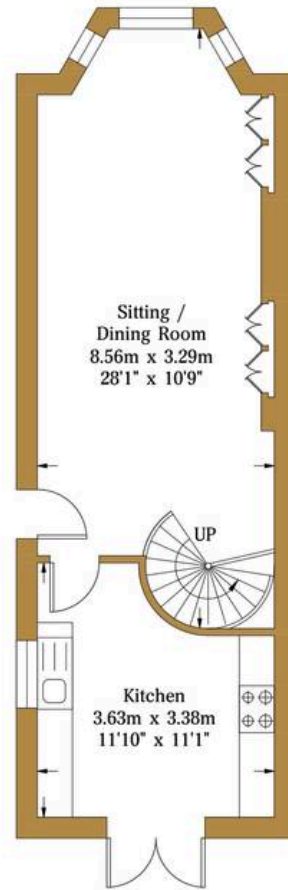


Denmark Villas

Approx. Gross Internal Area:- 73.22 sq.m. 788.12 sq.ft.

HW

ESTATE AGENTS

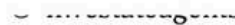


Ground Floor
Approximate Floor Area
394.06 sq ft
(36.61 sq m)

First Floor
Approximate Floor Area
394.06 sq ft
(36.61 sq m)

Illustration for identification purposes only, measurements are approximate, not to scale.

© hwestateagents





HW Estate Agents

HW Estate Agents, 80 Goldstone Villas, Hove - BN3 3RU

01273 359000 · hove@hwestateagents.co.uk · www.hwestateagents.co.uk

HW

ESTATE AGENTS