



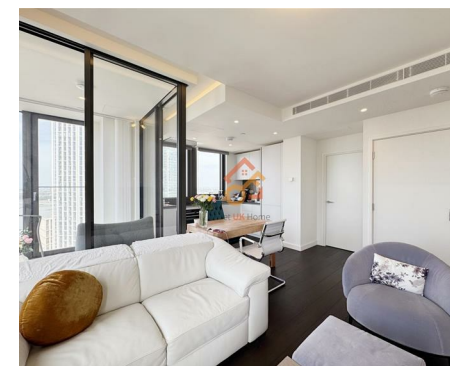
Let **UK** Home

2 Bedrooms

Flat

Located in London

£4,767 Per Month



[info@letukhome.co.uk](mailto:info@letukhome.co.uk)

<https://www.letukhome.co.uk/>

01795 358 886



# 67 Bondway London

## SW8 1GT



Let UK Home present this stunning two bedroom apartment in DAMAC Tower located in Nine Elms, London.

The flat comprises a spacious open kitchen with a stylishly attached dining area, a magnificent living room leading to a private balcony, two bright double bedroom with built-in wardrobes(master ensuite), one modern bathroom and ample storage.

Residents of this exceptional development have exclusive use of swimming pool, gymnasium, the spa, the jacuzzi, private cinema, children's play area, residents' lounge, and roof courtyards. Furthermore, residents will also benefit from concierge service and an unrivalled selection of shops, bars, restaurants, and leisure facilities.

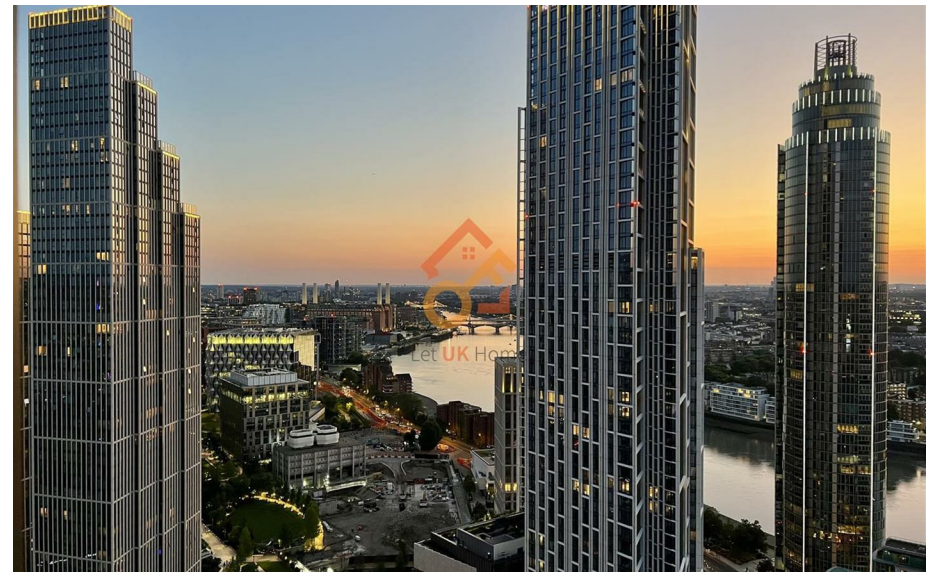
The famous Battersea Power Plant and Battersea Royal Park are within walking distance. Indoor rock climbing clubs, restaurants and bars from all over the world are all within walking distance. The high-end supermarket Waitross and flagship supermarket Sainsbury's, as well as a newly opened Chinese grocery store are all within easy reach.

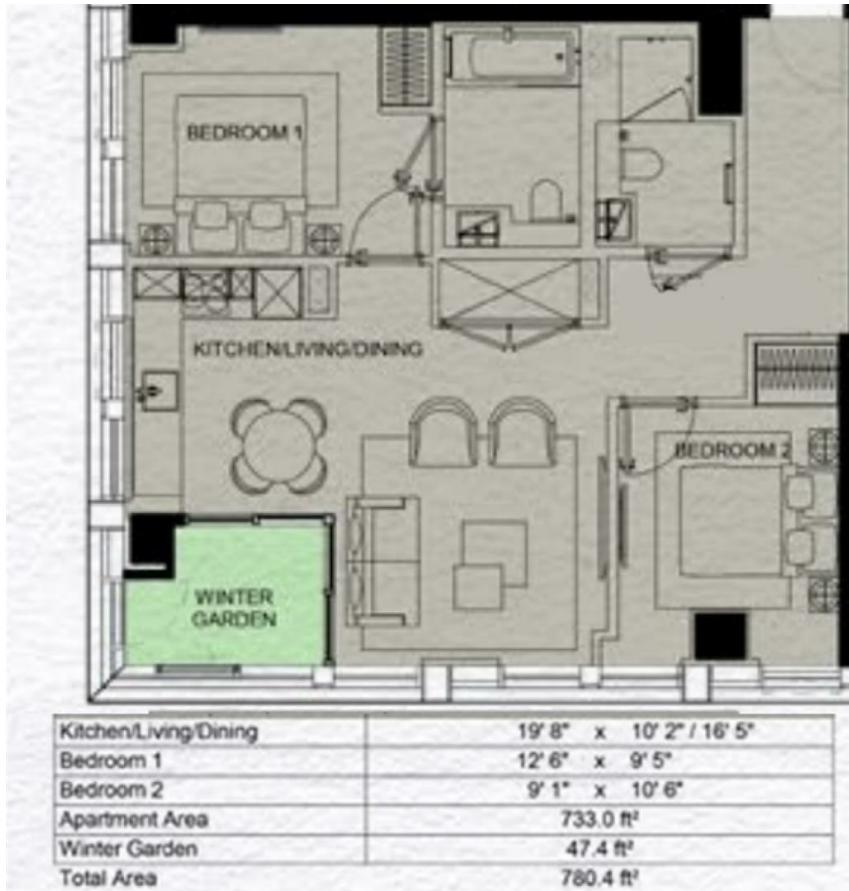
# 67 Bondway London

£4,767 Per Month



- 30th Floor
- 24h Security
- The Gym
- Cinema & Game Room
- EPC Rating:B
- Concierge Service
- Residents Lounge
- Swimming Pool
- The Spa





Let **UK** Home

3F 2 Eastbourne Terrace  
Paddington  
London  
W2 6LG

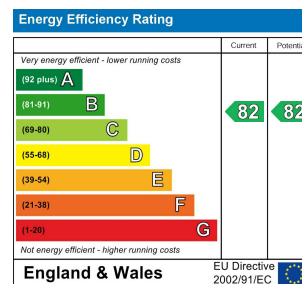
01795 358 886

info@letukhome.co.uk

**Council Tax Band: New Build**

**Local Authority:**

Agents Note: Whilst every care has been taken to prepare these particulars, they are for guidance purposes only. All measurements are approximate and are for general guidance purposes only and whilst every care has been taken to ensure their accuracy, they should not be relied upon and potential buyers/tenants are advised to recheck the measurements.



<https://www.letukhome.co.uk/>