



Guide Price
£380,000

Freehold

3x  2x  1x 

**Butneys, Basildon,
Essex, SS14**

OVER 60?

Secure this property
for up to **59% less!**

 **DOUGLAS
ALLEN**
Helping you move forwards



Main features

- 3 bedroom beautifully presented terraced house
- Double garage with allocated parking
- Newly refurbished throughout
- Extended to the rear
- Walking distance to Basildon station and town centre

Accommodation

GROUND FLOOR

Entrance Hallway
 Lounge: 21'7 x 12'9 (6.58m x 3.89m)
 Dining Area: 10'8 x 9'6 (3.25m x 2.90m)
 Kitchen: 9'4 x 8'9 (2.85m x 2.67m)
 Utility Area
 Shower Room

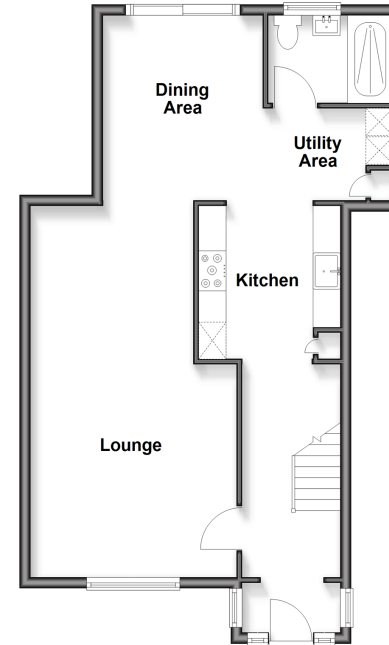
FIRST FLOOR

Landing
 Bedroom 1: 12'2 x 11'3 (3.71m x 3.43m)
 Bedroom 2: 19'4 x 11'3 (5.90m x 3.43m)
 Bedroom 3: 9'2 x 7'8 (2.80m x 2.34m)
 Shower Room

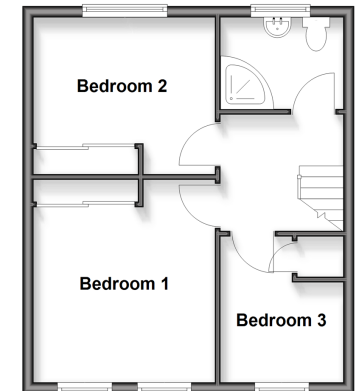
OUTSIDE

Double Garage
 Rear Garden
 2 x Allocated Parking Spaces
 Outbuilding

Ground Floor
 Approx. 58.8 sq. metres (632.5 sq. feet)



First Floor
 Approx. 37.9 sq. metres (407.9 sq. feet)



Unable to display material information. Please check with the branch for material information details for this property



505007FQ/20260425/MB/GW