

Property ref: 180889

Windermere Road, Reading, RG2 7HU

£2,600 PCM

HASLAM'S
Lettings



A very well presented four bedroom semi-detached property with easy access to Reading town centre, the mainline train station and major transport links via the M4 motorway.
Reading Borough Council tax band C.

Broadband/Mobile Info: Connections available. For an indication of specific speeds and supply of Broadband and Mobile, we advise applicants go to the Ofcom website Broadband and Mobile Coverage Checker.

Available Now

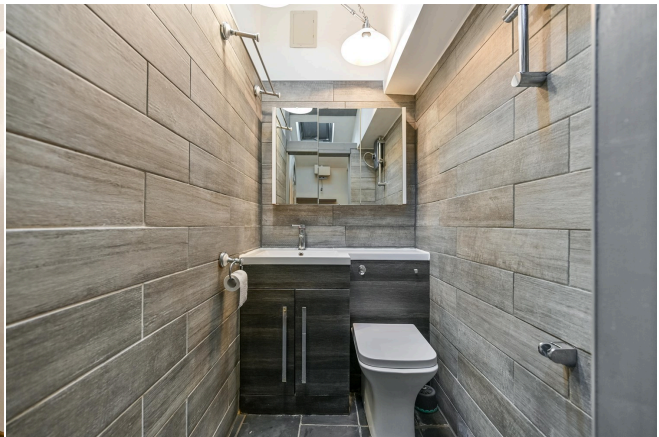
- Four bedrooms (one downstairs); Large garden with cabin
- Fully fitted kitchen with appliances; Separate utility room
- Off road parking; EPC rating C
- Upstairs bathroom with shower over bath; Further shower room & W/C downstairs
- Gas central heating; Driveway parking
- Unfurnished; Managed by HASLAM'S

*Fees For Assured Periodic Tenancies: when you rent a property from us you will be required to pay a sum equivalent to one weeks' rent for a holding deposit. Upon successful application, this amount will be off set against your first months' rent. You will also be required to pay a security deposit equivalent to 5 weeks' rent which will be held and protected in line with Deposit legislation. For more information about our fees please visit: www.haslams.net
Fees for all other tenancies (Non Housing Act Tenancies / Company Lets): when you rent a property from us we will charge you a one-off fee per property. This charge is the equivalent of 15 days of the monthly rental charge (+VAT) with a minimum fee of £450 (inc.VAT) up to a maximum of £650 (inc.VAT). Other fees may apply depending on your circumstances.

0118 960 1055

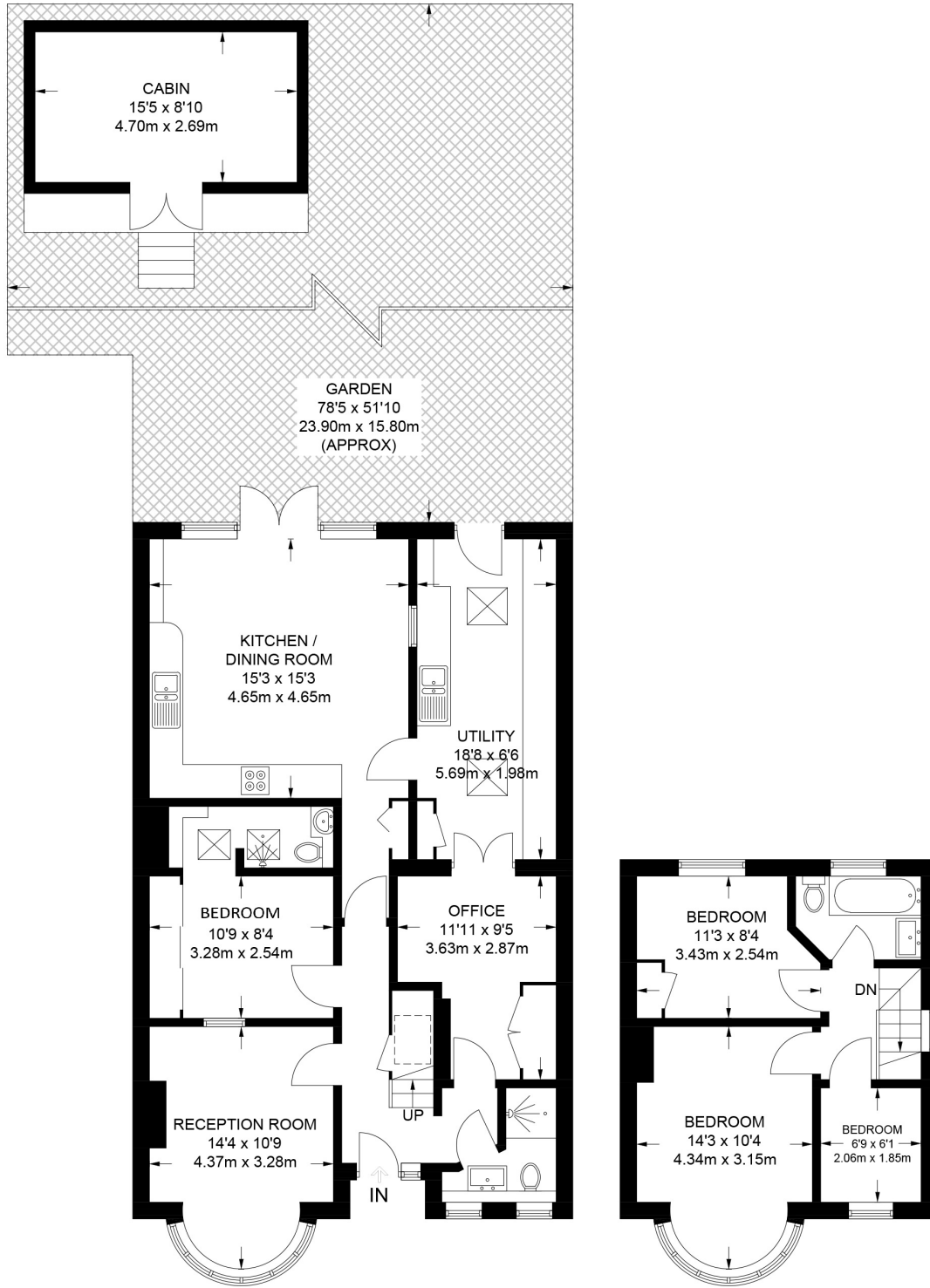
lettings@haslams.net www.haslams.net

Haslams Estate Agents Ltd, 159 Friar Street, Reading, Berkshire, RG1 1HE









GROUND FLOOR
947 SQ FT / 88.0 SQ M

FIRST FLOOR
343 SQ FT / 31.9 SQ M

APPROXIMATE GROSS INTERNAL AREA = 1290 SQ FT / 119.9 SQ M

CABIN = 137 SQ FT / 12.7 SQ M

TOTAL = 1427 SQ FT / 132.6 SQ M

This plan has been drawn for illustrative and identification purposes only.