



Westbourne Grove
London, W2

CHESTERTONS





An incredible two bedroom, two bathroom lateral apartment, set within a highly exclusive development on Kensington Gardens Square, Notting Hill.

This apartment has been finished to a very high standard throughout, complete with air conditioning and underfloor heating. The accommodation comprises of an expansive open plan reception room/kitchen, principle bedroom with en suite bathroom, second bedroom and family bathroom.

Additionally, the building benefits from a dedicated porter/caretaker, ensuring security and convenience for all residents. With its prime location and array of amenities including swimming pool, gym & golf simulator. This apartment offers a fantastic opportunity for a comfortable and convenient city living experience.

- Two Bedroom Apartment
- Two Modern Bathrooms
- Swimming Pool & Gym
- High Specification Finish
- Concierge
- Prime Notting Hill

£5,000 pcm

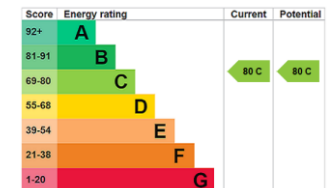
Additional tenant charges apply (fees apply to non-AST tenancies only)

Tenancy Agreement Fee: £300

References per Tenant/Guarantor: £60

Inventory check (approx. £100 – £250 inc. VAT)

[chestertons.co.uk/property-to-rent/applicable-fees](https://www.chestertons.co.uk/property-to-rent/applicable-fees)



Minimum Term: 12 months
Deposit Required: £6,923.08
Local Authority: City of Westminster
Council Tax Band: G
EPC Rating: C
Furnished

Chestertons Notting Hill Lettings

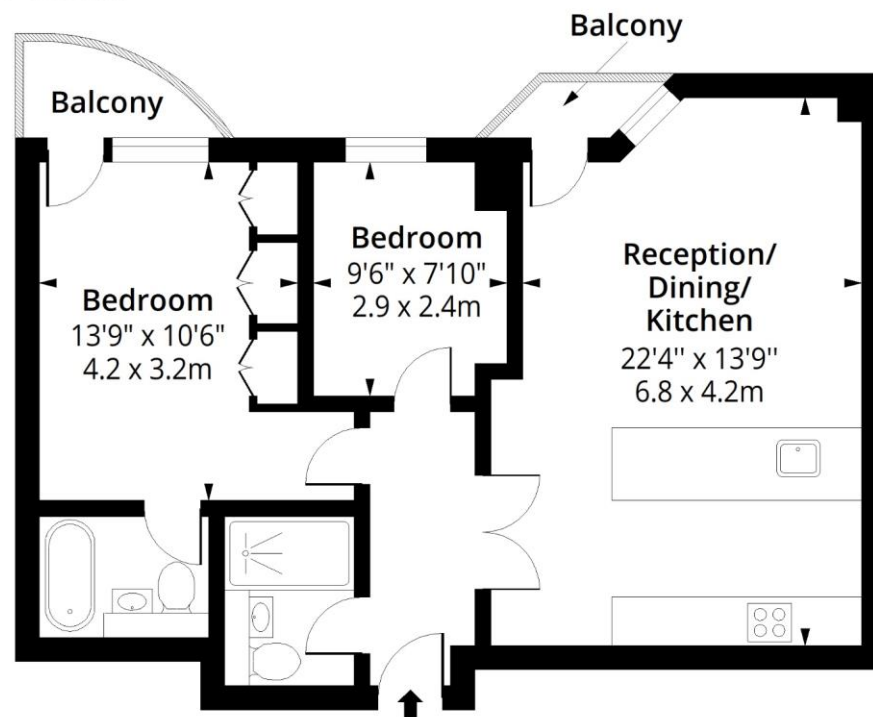
30 Ledbury Road
 Notting Hill
 London
 W11 2AB

nottinghilllettingsusers@chestertons.co.uk
 02030408588

Westbourne Grove, W2

Approx. Gross Internal Area 694 Sq Ft - 64.48 Sq M

Approx. Gross Balcony Area 35 Sq Ft - 3.25 Sq M



Third Floor

Floor Area 694 Sq Ft - 64.48 Sq M



Measured according to RICS IPMS2. Floor plan is for illustrative purposes only and is not to scale. Every attempt has been made to ensure the accuracy of the floor plan shown, however all measurements, fixtures, fittings and data shown are an approximate interpretation for illustrative purposes only. 1 sq m = 10.76 sq feet.

lpaplus.com

Date: 4/9/2025

Chesterton UK Services Limited trading as Chestertons for themselves and for the vendor of this property whose agents they are, give notice that (i) these particulars do not constitute any part of an offer or contract, (ii) all statements contained within these particulars are made without responsibility on the part of Chestertons or the vendor, (iii) whilst made in good faith, none of the statements contained within these particulars are to be relied upon as a statement or representation of fact, (iv) any intending purchasers must satisfy themselves by inspection or otherwise as to the correctness of each of the statements contained within these particulars, (v) the vendor does not make or give either Chestertons or any person in their employment any authority to make or give representation or warranty whatsoever in relation to this property. Wide angle lenses may be used. ©Copyright Chestertons | Chesterton Global Ltd | Registered Office 40 Connaught Street, Hyde Park, London W2 2AB Registered Company Number 05334580.



This paper is
100% recyclable