



## 22 Postern Close

, York, YO23 1JF

£1,300 PCM

Postern Close | First Floor 2 Bed Apartment | Within Walking Distance of the City Centre | Good Size Lounge | Allocated Parking Space | Available August 2026 | Council Tax Band D | EPC Rating C

- First Floor 2 Bed Apartment
- Good Size Lounge
- Unfurnished
- Allocated Parking Space
- Within Walking Distance of the City Centre
- Available August 2026
- Council Tax Band D
- EPC Rating C

### Viewing

Please contact our Quantum Estate Agency Lettings Office on 01904 631631 if you wish to arrange a viewing appointment for this property or require further information.



For Sale

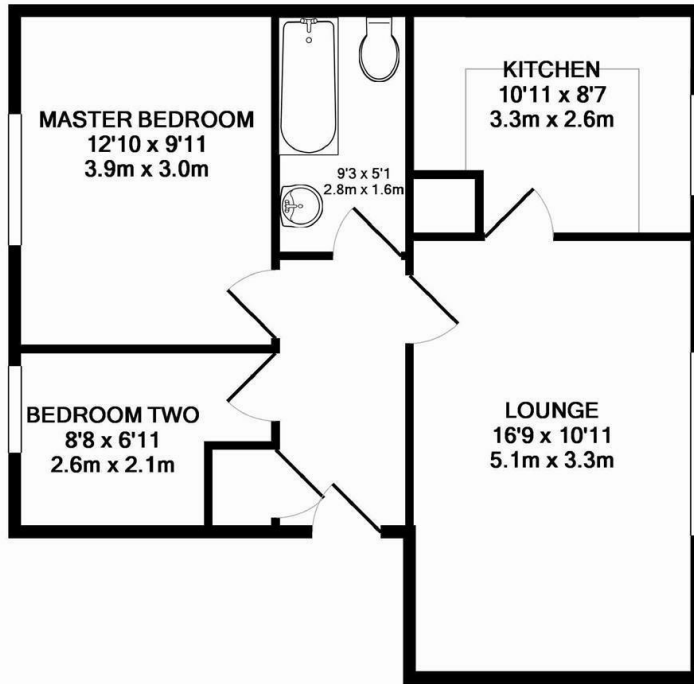
Energy Efficiency Rating

	Current	Potential
Very energy efficient - lower running costs		
(92 plus) <b>A</b>		
(81-91) <b>B</b>		
(69-80) <b>C</b>	<b>79</b>	<b>79</b>
(55-68) <b>D</b>		
(39-54) <b>E</b>		
(21-38) <b>F</b>		
(1-20) <b>G</b>		
Not energy efficient - higher running costs		

England & Wales EU Directive 2002/91/EC Environmental Impact (CO<sub>2</sub>) Rating

	Current	Potential
Very environmentally friendly - lower CO <sub>2</sub> emissions		
(92 plus) <b>A</b>		
(81-91) <b>B</b>		
(69-80) <b>C</b>		
(55-68) <b>D</b>		
(39-54) <b>E</b>		
(21-38) <b>F</b>		
(1-20) <b>G</b>		
Not environmentally friendly - higher CO <sub>2</sub> emissions		

England & Wales EU Directive 2002/91/EC



TOTAL APPROX. FLOOR AREA 574 SQ.FT. (53.3 SQ.M.)  
Made with Metropix ©2012



6 Walmgate, York, YO1 9TJ

t: 01904 631631 e: homes@quantumstateagency.com www.quantumstateagency.com

These particulars, whilst believed to be accurate are set out as a general outline only for guidance and do not constitute any part of an offer or contract. Intending purchasers should not rely on them as statements of or representation of fact (especially if a substantial journey is required to view the property), but must satisfy themselves by inspection or otherwise as to their accuracy. No person in this firm's employment has the authority to make or give any representation or warranty in respect of the property.