



**Faraday Road, SW19**

**£1,100,000**

**Dexters**



## Faraday Road, SW19

A four bedroom, two bathroom, terraced house with a separate reception room and an open plan kitchen dining room, with access to a decked area and low maintenance, south facing garden.

The ground floor has a separate reception room to the front, with dividing doors to the dining room giving a wonderful open plan kitchen/ reception room. The kitchen is well located to the right of the house, leaving the left as a dining/ breakfast area with doors to the south facing garden.

The first floor has two near equally sized double bedrooms, with the addition of a single/ study at the front of the house. The main family bathroom is three piece suite.

The loft has been converted to offer another large double bedroom and has an ensuite bathroom. The house is in good condition overall, with a south facing garden and sold with no onward chain.

Nestled in the highly regarded South Park Gardens grid, with quick access to Wimbledon Town Centre, National Rail, District and Northern line tube, Haydons Road Thameslink and Tram Link, with well respected schools nearby.

### Features

- Four Bedrooms
- Two Bathrooms
- Open Kitchen/ Dining
- South Facing Garden
- Victorian Terrace
- No Onward Chain

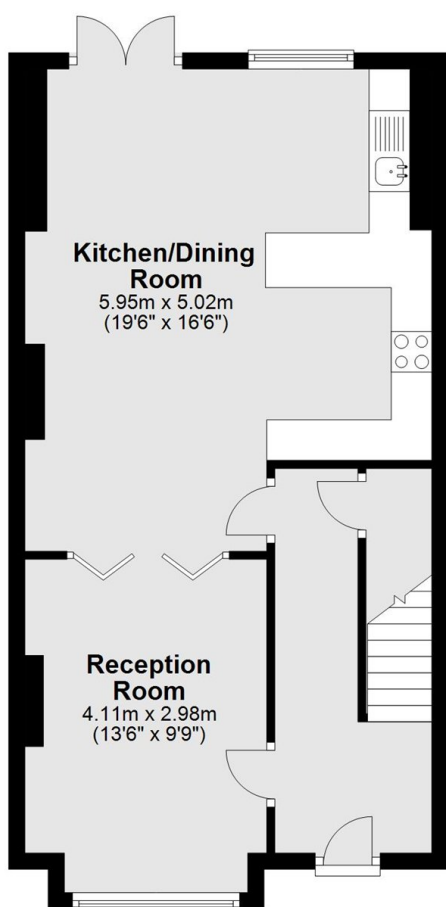




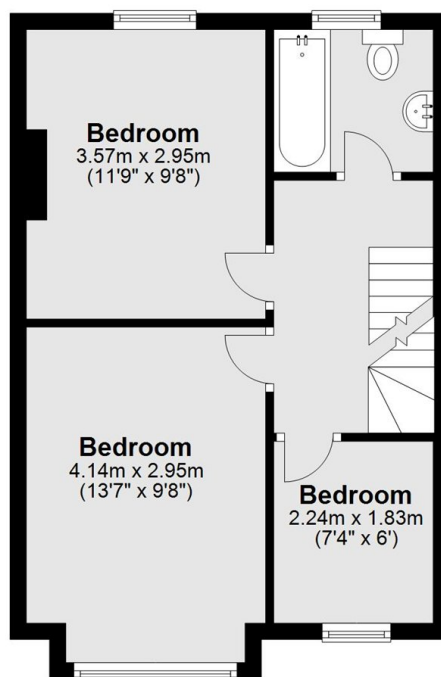


# Faraday Road, London, SW19

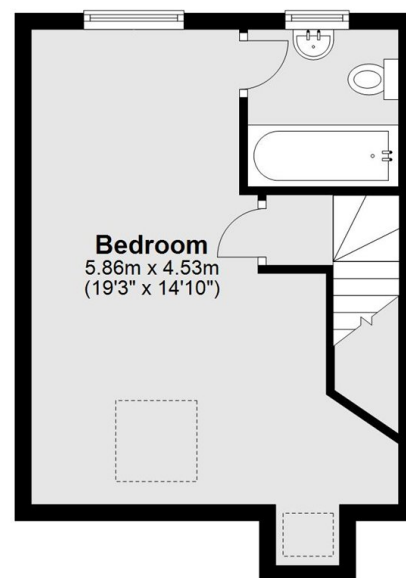
## Ground Floor



## First Floor



## Second Floor



Total area: approx. 114.6 sq. metres (1233.6 sq. feet)