



48 Murray
Terrace,
Smithton,
Inverness, IV2
7WX

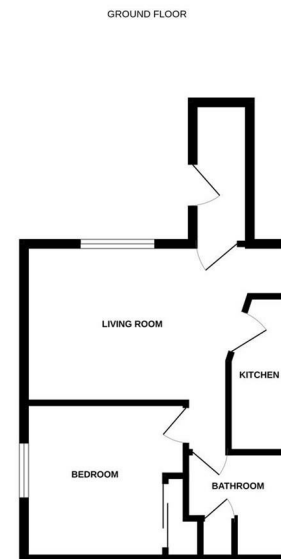
Offers Over £100,000



This well presented one bedroom flat, located in the popular residential area of Murray Terrace, offers an excellent opportunity for first time buyers or investors. Situated on the ground floor, the property features its own private entrance and allocated off street parking. The accommodation includes a bright and spacious lounge, ideal for relaxing or entertaining a recently fitted kitchen complete with an integrated electric hob, oven, extractor fan, fridge/freezer and washing machine. The double bedroom benefits from a built in wardrobe, while the hallway provides additional storage with a useful cupboard. A modern, newly installed bathroom suite completes the interior.

Further features include double glazing and an upgraded electric heating system. With its convenient location close to the UHI campus, appealing layout, and modern upgrades, this property represents an ideal purchase for those seeking a comfortable home or a strong rental investment.

- One bedroom ground floor flat
- Newly fitted kitchen and bathroom
- Close to UHI campus and local amenities
- Ideal first time buy or investment property
- Lounge, kitchen, double bedroom, bathroom
- EPC Band C



Extras: All fitted floor coverings, fixtures and fittings, including all light fittings. Curtain poles and window blinds. Integrated appliances including the oven, hob, extractor, fridge freezer and washing machine.

Services: Electricity, water and drainage. Telephone and fibre broadband.

Council Tax: B

Floor Area: 409.03 sq ft

Date of Entry: By mutual agreement.

Viewing: Don't delay – get in touch with Tailormade Moves today to arrange a viewing

The Greenhouse Beechwood
Business Park
Inverness
Highland
IV2 3BL

E: info@tailormademoves.co.uk
T: 01463 233218

