



Mercia Road, Desborough Kettering **Freehold** £300,000 O.I.E.O.

**Pattison
Lane**

Key Features

 3  2  B  D

- Three Bedroom Detached Home
- Garage & Driveway
- Downstairs Cloakroom
- Bay Front Lounge
- En Suite to Master Bedroom

Originally constructed by the renowned Bellway Homes, this exceptional three-bedroom detached residence is situated within the highly coveted Weavers Mead development. Presented in immaculate condition throughout, the home perfectly balances modern efficiency with high-end finishes.



The ground floor features a bright and expansive kitchen-diner, thoughtfully designed with a comprehensive range of integrated appliances. To the first floor, the primary bedroom serves as a private retreat, complete with a contemporary en-suite.

Externally, the property boasts a private, walled rear garden, offering an unusual degree of seclusion for a modern home. A standout feature is the oversized garage, measuring over 10ft in width, providing ample space for larger modern vehicles or additional storage.

Internal viewing is highly recommended to appreciate the standard of accommodation on offer.

The accommodation comprises:

HALLWAY

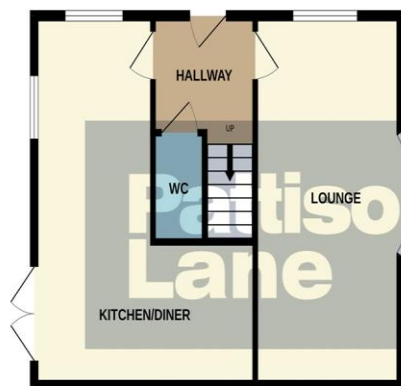
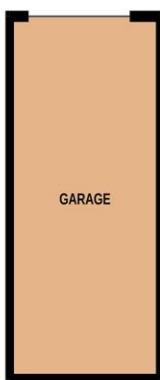
CLOAKROOM

LOUNGE 19'5 x 10'2 (5.91m x 3.09m)

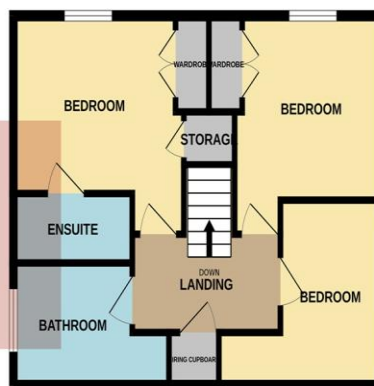
KITCHEN / DINING ROOM 19'5 narrowing to 7'7 x 15'5 narrowing to 8'3 (L shaped room) (5.91m narrowing to 2.31m x 4.69m narrowing to 2.51m)



GROUND FLOOR



1ST FLOOR



Whilst every attempt has been made to ensure the accuracy of the floorplan contained here, measurements of doors, windows, rooms and any other items are approximate and no responsibility is taken for any error, omission or mis-statement. This plan is for illustrative purposes only and should be used as such by any prospective purchaser. The services, systems and appliances shown have not been tested and no guarantee as to their operability or efficiency can be given.
Made with Metropix ©2026

FIRST FLOOR LANDING

BEDROOM ONE 12'1 max x 9'4 plus recess
(3.68m x 2.84m)

EN SUITE

BEDROOM TWO 10'4 x 9'2 (3.14m x 2.79m)

BEDROOM THREE 6'4 plus recess x 9'11 (1.93m x 3.02m)

BATHROOM

OUTSIDE

FRONT GARDEN

GARAGE 10'6 x 19'1 (3.20m x 5.81m) &
DRIVEWAY

REAR GARDEN

To view this property call Pattison Lane on:
01536 430527

Selling your property?



SCAN ME

Contact us to arrange a **FREE** home valuation.

 01536 430527

 42 Station Road, Desborough, KETTERING, Northamptonshire, NN14 2RL

 desborough@pattisonlane.co.uk

 www.pattisonlane.co.uk



SCAN ME



Sharman Quinney Holdings Limited is registered in England and Wales under company number 4174227, Registered Office is Cumbria House, 16-20 Hockliffe Street, Leighton Buzzard, Bedfordshire, LU7 1GN. VAT Registration Number is 500 2481 05.

1: These particulars do not constitute part or all of an offer or contract. 2: The measurements indicated are supplied for guidance only and as such must be considered incorrect. 3: Potential buyers are advised to recheck the measurements before committing to any expense. 4: Sharman Quinney has not tested any apparatus, equipment, fixtures, fittings or services and it is the buyers interests to check the working condition of any appliances. 5: Sharman Quinney has not sought to verify the legal title of the property and buyers must obtain verification from their legal representative. 6: Intending purchasers will be asked to produce identification documentation at a later stage and we would ask your co-operation in order that there will be no delay in agreeing the sale. Ref: DPL101666 - 0004

