



Shalbourne Square, E9

£415,000

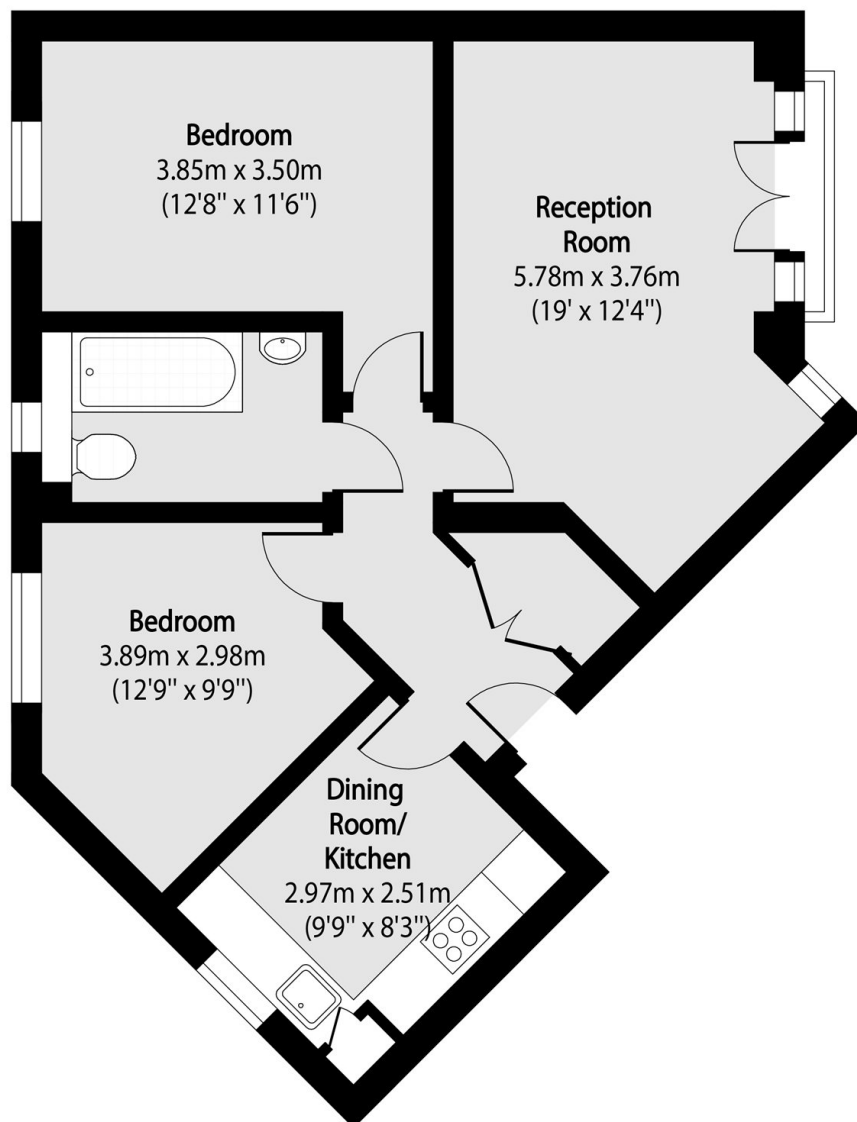
A bright two double bedroom apartment close to Victoria Park. The property features a spacious living area with Juliet balcony, separate kitchen and modern family bathroom. It benefits from an allocated parking space and access to a communal garden.

Based on the northern edge of Victoria Park the property is a short walk from all the restaurants, pubs and local shops of Victoria Park Village and Hackney Wick. The transport and shopping hub of Stratford is also within walking distance as well as Overground services from Hackney Wick station.

Features

- Two Double Bedrooms
- Hackney Wick
- Separate Kitchen
- Juliet Balcony
- Communal Garden
- Allocated Parking Space

Shalbourne Square, London, E9



Total area (approx): 57.60 sq m (620 sq. ft)