



Westbourne Terrace, W2

£650,000



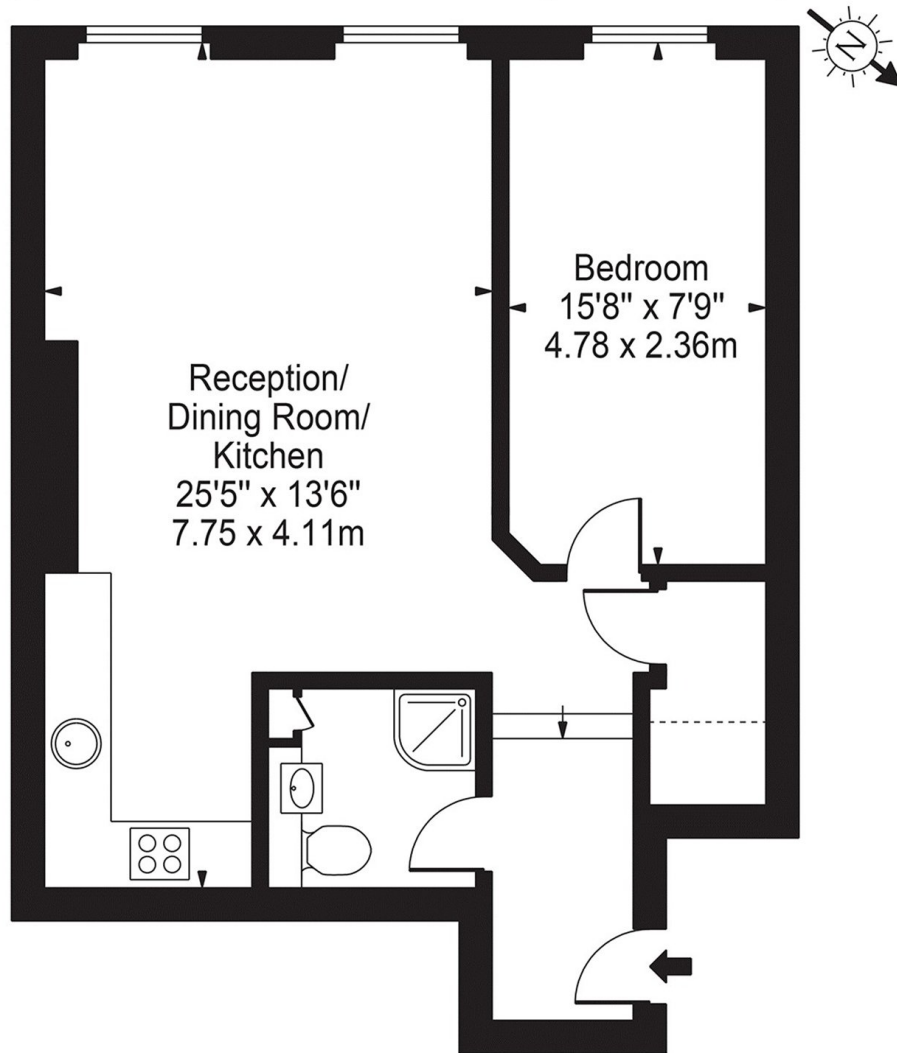
- One Double Bedroom
- Third Floor Apartment

- No Onward Chain
- Stucco Fronted

- Envidable Location
- S/W Facing

Westbourne Terrace, W2

Approx. Gross Internal Area 560 Sq Ft - 52.03 Sq M



Third Floor

For Illustration Purposes Only - Not To Scale

This floor plan should be used as a general outline for guidance only and does not constitute in whole or in part an offer or contract. Any intending purchaser or lessee should satisfy themselves by inspection, searches, enquiries and full survey as to the correctness of each statement. Any areas, measurements or distances quoted are approximate and should not be used to value a property or be the basis of any sale or let.

Marsh & Parsons Notting Hill

2-6 Kensington Park Road,
London, W11 3BU
020 7313 2890