



Anchitel Green, Leamington Spa, CV33 9FP

**SHELDON
BOSLEY
KNIGHT** LAND AND
PROPERTY
PROFESSIONALS

Property Description

*** AVAILABLE 15th JUNE - DEPOSIT ALTERNATIVE AVAILABLE *** A beautifully presented two-bedroom semi-detached home, offering attractive views across Leamington Spa, off-road driveway parking, and a thoughtfully designed open-plan living space that creates an ideal environment for modern living and entertaining. Situated on the outskirts of Bishop's Tachbrook, this property represents a rare opportunity to rent a high-specification, contemporary home.

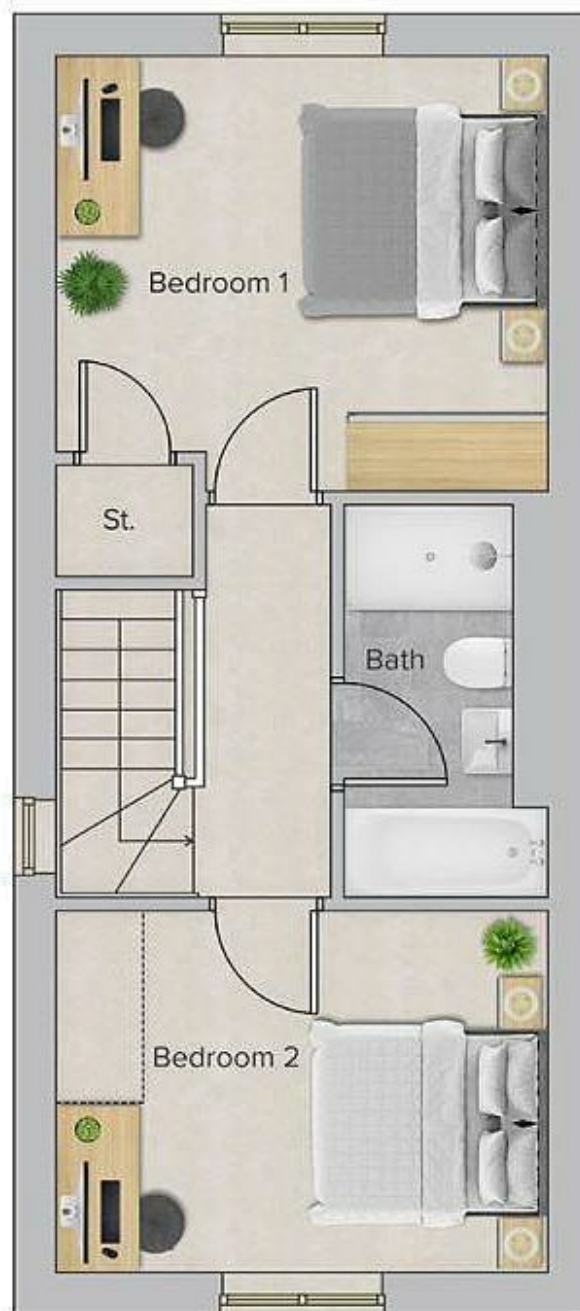
The property features a well-appointed, modern kitchen complete with integrated appliances, including a washing machine, dishwasher, fridge, freezer, and microwave. The space is enhanced by French doors that allow for an abundance of natural light and provide direct access to the rear garden. A convenient ground floor cloakroom adds further practicality, while an under-stairs alcove offers a useful and discreet home working area.

To the first floor, there are two generously proportioned bedrooms. The principal bedroom benefits from fitted wardrobes, while the second is a well-sized double room. These are served by a spacious family bathroom, comprising a full suite with a separate shower cubicle. Additional storage is available via loft access, complete with fitted ladder.

Externally, the property boasts a private rear garden with side access, as well as driveway parking to the front. Offered unfurnished. Energy Performance Rating: B. Council Tax Band: C. *please note that the floorplan provided is for illustrative purposes and is not to scale.







Key Features

- AVAILABLE 15th JUNE
- Bishops Tachbrook, Leamington Spa
- DEPOSIT ALTERNATIVE AVAILABLE
- Two Double Bedrooms & Loft Access
- Semi Detached House
- Unfurnished
- High Specification Finish Throughout
- Rear Private Garden & Driveway Parking
- Energy Rating B
- Council Tax Band C

£1,395 PCM