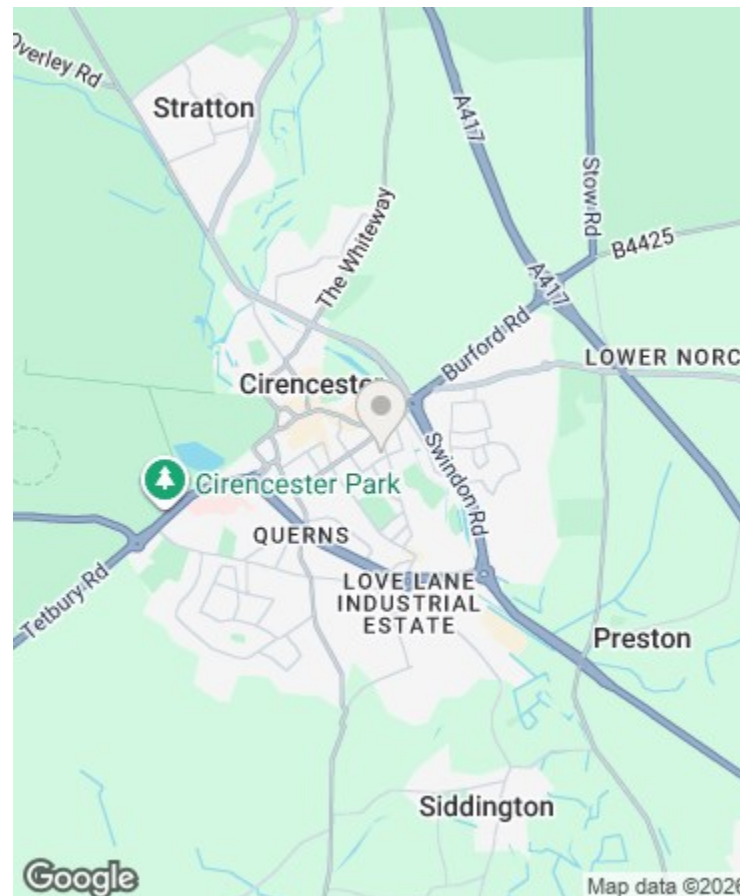




THE COTSWOLD LETTING AGENCY

BETTER BY FAR



Directions

Viewings

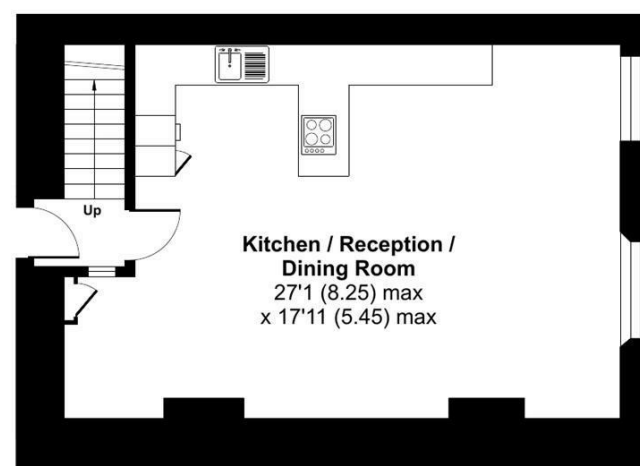
Viewings by arrangement only. Call 01993 684572 to make an appointment.

EPC Rating

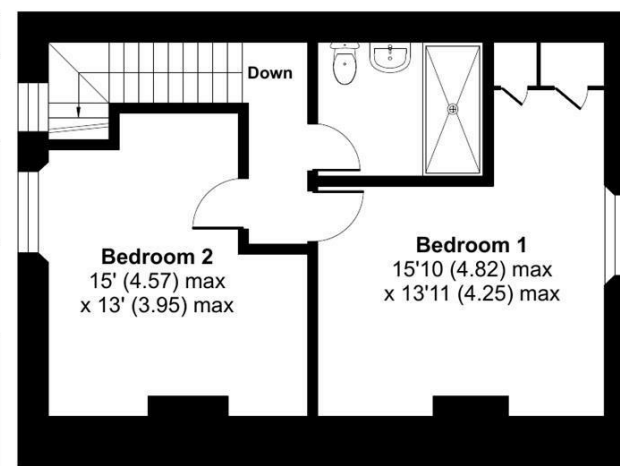
Energy Efficiency Rating		
	Current	Potential
Very energy efficient - lower running costs		
(92 plus) A		
(81-91) B		
(69-80) C		
(55-68) D		
(39-54) E		
(21-38) F		
(1-20) G		
Not energy efficient - higher running costs		
England & Wales		
EU Directive 2002/91/EC		

Carpenters Lane, Cirencester, GL7

Approximate Area = 992 sq ft / 92.1 sq m
For identification only - Not to scale



FIRST FLOOR



SECOND FLOOR

Floor plan produced in accordance with RICS Property Measurement 2nd Edition, Incorporating International Property Measurement Standards (IPMS2 Residential). © nitchecom 2025. Produced for The Cotswold Letting Agency Ltd REF: 1331685



Painswick Apartment Carpenters Building, Carpenters Lane, Cirencester, Gloucestershire, GL7 1FF
£2,995 Per Month

- Newly renovated
- Central location
- Short Let
- 2 bedrooms
- Luxury apartment

Painswick Apartment Carpenters Building, Cirencester

£171EE



Council Tax Band:

A newly renovated Painswick apartment, just a short walk from Cirencester’s lively pubs, cafés, and shops, offers a striking blend of Victorian opulence and contemporary Cotswold charm. Its rich green and deep purple palette, accented with touches of gold, creates a bold yet inviting atmosphere. Spanning two floors, the apartment comfortably sleeps four with a King bedroom and a twin room, both designed for ultimate relaxation. The open-plan kitchen, dining, and lounge area is fully equipped, making it an ideal space to unwind.

Housed in the historic Carpenters Building on The Avenue, this property dates back to 1882 when it first served as a furniture shop. Now transformed into three elegant apartment suites, it retains its Victorian character with soaring ceilings, spacious rooms, stone facades, and grand sash windows. Nestled within Cirencester’s old Roman walls, just off the high street, it offers easy access to the town’s market, the historic Abbey and gardens, boutique shopping, traditional pubs, and charming cafés—perfect for soaking in the local atmosphere. Rental price excludes electricity and cleaning.

