

**OVER 60?**

Secure this property  
for up to **59% less!**



**Offers In Excess Of**  
**£700,000**  
**Freehold**

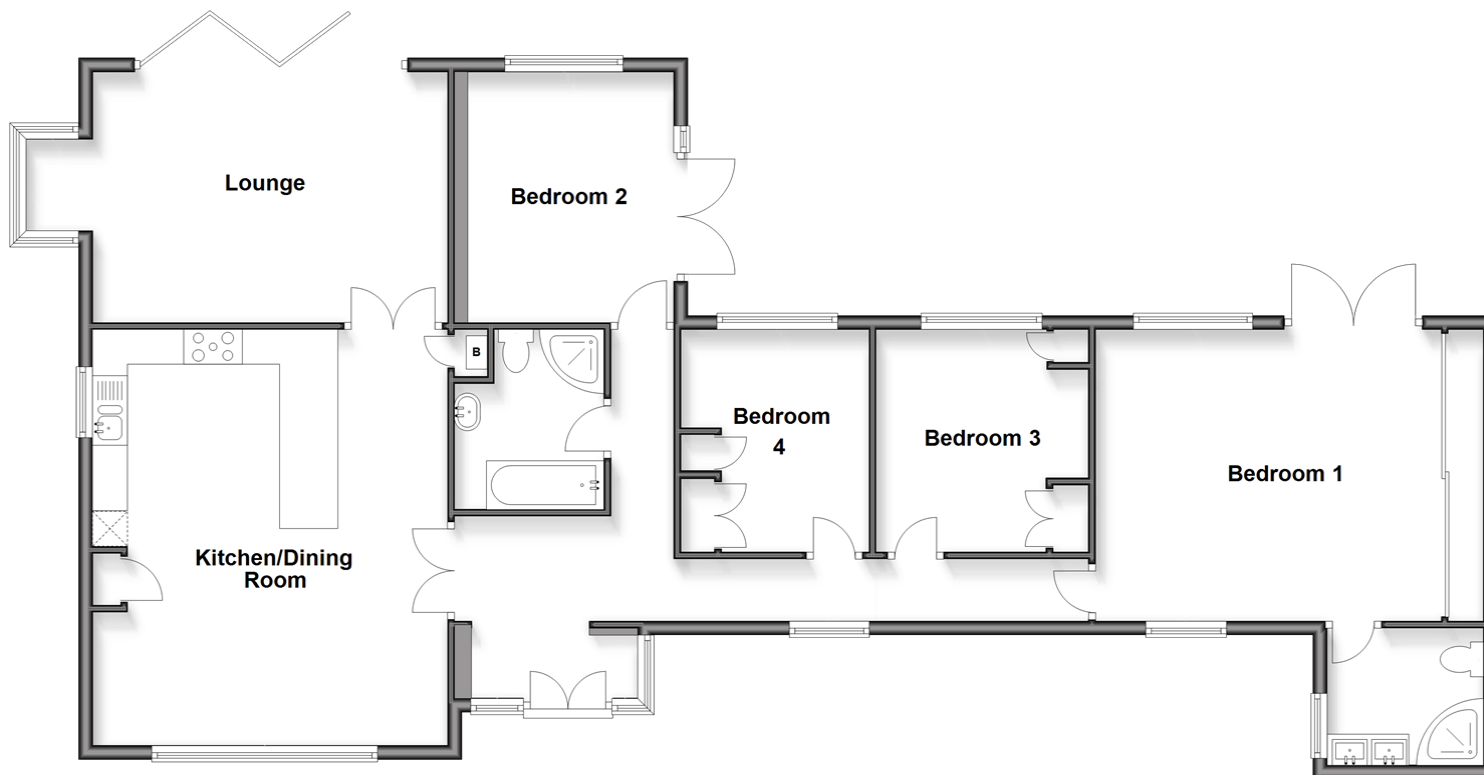
4x  2x  1x 

Greenacres, Ashington, West Sussex, RH20

**cubitt & west**  
Helping you move forwards

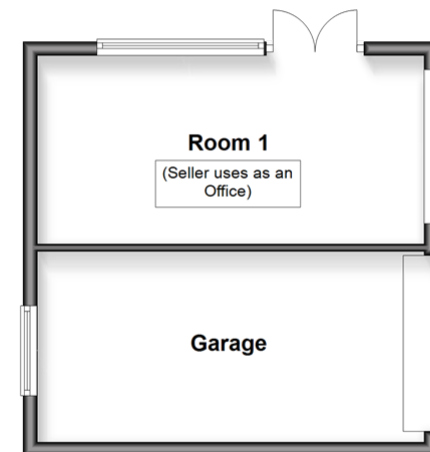
## Ground Floor

Approx. 132.2 sq. metres (1423.1 sq. feet)



## Outbuilding

Approx. 30.8 sq. metres (331.4 sq. feet)



## Accommodation

### GROUND FLOOR

Entrance Hall

Family Bathroom

Bedroom 2: 11'9 x 9'7 (3.58m x 2.92m)

Kitchen/Dining Room: 19'6 x 16'7 (5.95m x 5.06m)

Lounge: 20'3 x 11'9 (6.18m x 3.58m)

Bedroom 4: 10'5 into fitted wardrobes x 8'7 (3.18m x 2.62m)

Bedroom 3: 10'5 x 9'9 into fitted wardrobes (3.18m x 2.97m)

Bedroom 1: 16'2 up to fitted wardrobes x 13'7 (4.93m x 4.14m)

En Suite Shower Room

### OUTBUILDING

Detached Garage/Room 1: 18'1 x 8'8 minimum (5.52m x 2.64m) plus 18'1 x 9'1 (5.52m x 2.77m)

### OUTSIDE

Large Driveway

Front Garden

Side Garden

Rear Garden

Summer House: 10'7 x 9'0 (3.23m x 2.75m)



## Main features

- Spacious light and airy accommodation
- Generous plot including detached garage/office, perfect for hobbies and home working
- Large kitchen/dining room with integrated appliances
- Well presented property in small cul de sac close to amenities
- No onward chain!

## Nearest Schools

Primary Schools: Ashington C of E School 0.6 miles.

Secondary Schools: Steyning Grammar Lower School, Rock Road site 3.1 miles, Upper School, Shooting Field site 5.2 miles.

## Transport Information

Train Stations: Billingshurst 9.7 miles, Horsham 15.2 miles.

## Address

Greenacres, Ashington, West Sussex, RH20

## Directions

For directions to this property please contact us.



**cubitt&west**  
Helping you move forwards

Call Ashington Branch 01903 891444 ■ [cubittandwest.co.uk](http://cubittandwest.co.uk)



- Legal advice should be taken to verify fixtures/fittings, planning, alterations and/or lease details
- Appliances & services are untested, dimensions are approximate and floor plans are not to scale
- Through a Homewise Home For Life Plan people aged 60+ can secure this property for up to 59% less, by purchasing a Lifetime Lease



23603351/20260129/LI/HM1