

One Bedroom Ground Floor Flat For Rent - **Monthly Rental Of £1,000**

Cambridge Road, Southend-On-Sea SS1 1ET



KEY FEATURES

- One Bedroom, Lower Ground Floor Flat
 - Modern Bathroom
 - Equipped Kitchen
 - Bright Lounge with Bay Window
 - Spacious Bedroom
 - Direct Access to Private Courtyard Space
 - Local to Popular Travel Routes with Easy Access to London
 - Minutes from Southend City Centre and Southend Seafront
 - Within a Highly Sought After Neighborhood
- Viewings Available Now!**

Description

One Bedroom, Lower Ground Floor Flat! Belle Vue are happy to welcome this quirky property to the rental market! Located just minutes from Southend City Center, this property has ease of access to all the local shops and eateries that Southend has to offer, whilst with strong links to London and a short walk from Southend Seafront. Entering into the bright and open lounge space, this flat offers a warm toned kitchen, modern bathroom and a good sized, double bedroom with direct access to a courtyard-style space. Tranquil in nature, this flat offers a comfortable, yet contemporary living, all whilst complete with gas central heating. Viewings are available now! Photos are from a previous listing, however, they are a good representation of the properties condition.

Accommodation

Lounge 15' 3" x 11' 4" (4.64m x 3.45m)

Entering the property, you are welcomed into the lounge via a wooden front door. With carpet flooring and painted walls, this space features two, decorative alcoves as well as a bay window towards the front elevation and a fitted radiator. From here, there is a doorway leading to the kitchen and rear lobby.

Kitchen 11' 4" x 7' 7" (3.45m x 2.31m)

Accessed from the lounge, there is a warm toned kitchen. With wood effect flooring and matching wood effect counter tops, this space is comprised of both eye level and low level storage units that provides ample storage, whilst housing amenities such as an inset oven, hob, sink and extractor. Finished with recessed spot lighting, splashback wall tiling and a window towards the side elevation.

Lobby

From the lounge, there is a lobby with carpet flooring and painted walls. Benefiting from a built in storage cupboard, there is a door leading into the bathroom and a door leading to the bedroom.

Bathroom 6' 4" x 9' 11" (1.93m x 3.02m)

Accessed from the rear lobby, there is a three piece bathroom. Finished with tiled flooring and matching splashback wall tiling, this space is comprised of a corner bath with shower head attachment, shower curtain, low level W/C and wall mounted hand wash basin. Additional benefits include an extractor as well as a fitted radiator.

Bedroom 10' 11" x 9' 4" (3.32m x 2.84m)

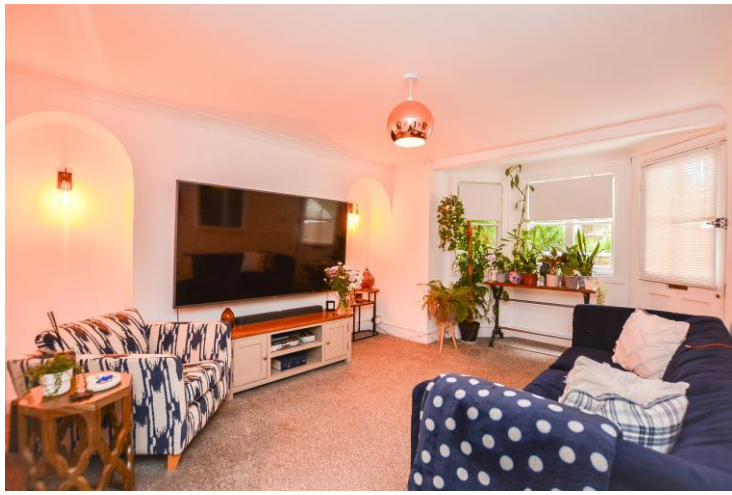
Accessed from the rear lobby, there is a double bedroom. With carpet flooring and painted walls, this space is complete with a fitted radiator as well as a window towards the rear elevation of the property. From here, there is a further wooden door leading into the courtyard space.

Courtyard Style Garden 9' 8" x 6' 0" (2.94m x 1.83m)

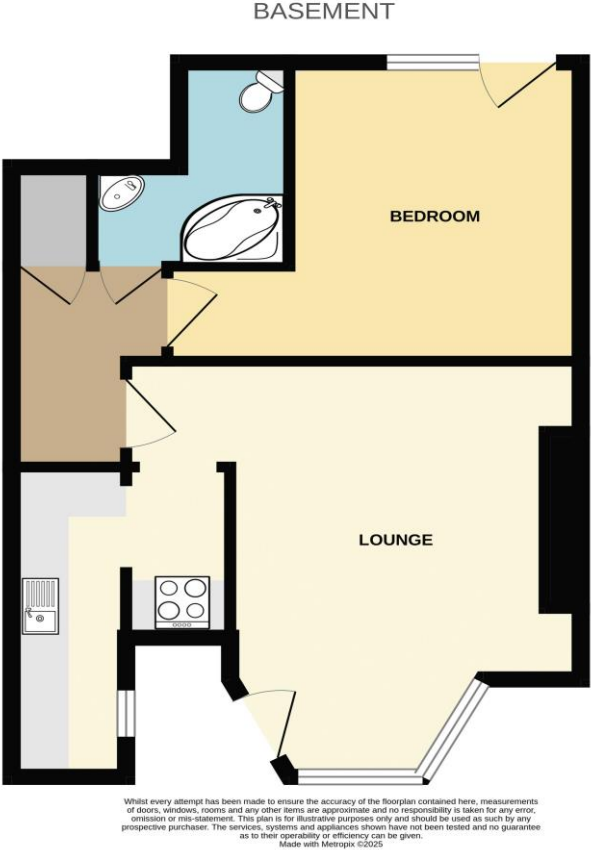
Accessed via the bedroom, there is a wooden door leading into the courtyard style garden.

Agents Note

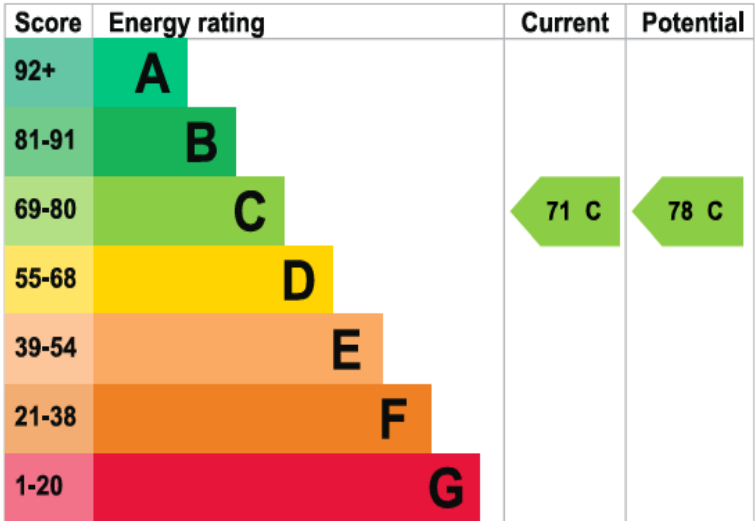
Photos are from a previous listing, however, are a good representation of the properties condition.



Floorplan



EPC Graph & Additional Information



Tax Band for this property is: **A**
EPC rating for this property is: **C**
Tenure of the property is: **Leasehold**



Disclaimer

Whilst every effort is made to ensure that the information provided in these particulars is accurate, customers should view such information, including descriptions, room sizes & photos, purely as a guide and should not be relied upon. All appliances are untested. Items shown in the photos are not necessarily included with the property.