

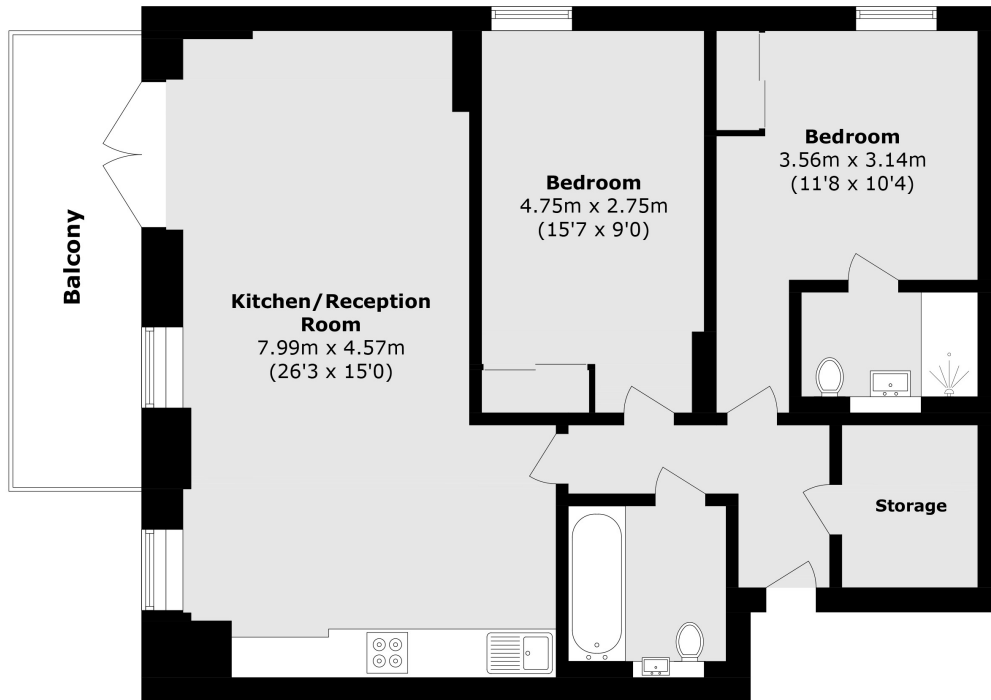


## LAKESIDE DRIVE, NW10

**£2,300 pcm**

Tired of making the time for flats that aren't for you? Here is a flat you cannot refuse. This beautiful 2 bedroom 2 bathroom flat is the absolute package, a spacious living room with an open plan kitchen boasting serene views from the comfort of your living room. Bathrooms oozing luxury, offered fully furnished. What's better? Communication routes at its finest, only

- Unfurnished
- Lift Access
- 825 sq. ft
- Open Plan
- Private Balcony
- EPC Rating C



Total area (approx.): 76.6 sq. m (824.5 sq. ft)  
Balcony area (approx.): 8.8 sq. m (94.7 sq. ft)

**LiFE RESIDENTIAL**

203 Trentham Court, Victoria  
Road, London, W3 6BT  
Sales: 020 3668 1112  
Lettings: 020 3668 1111

Energy Rating: C. We aim to make our particulars both accurate and reliable. However they are not guaranteed; nor do they form part of an offer or contract. If you require clarification on any points then please contact us, especially if you're traveling some distance to view. Please note that appliances and heating systems have not been tested and therefore no warranties can be given as to their good working order.