



## Nathan K Real Estate

65 Amwell Street, London - EC1R 1UR

02034111143 • [ec1@nathankrealestate.com](mailto:ec1@nathankrealestate.com) • [nathankrealestate.com](http://nathankrealestate.com)



## Flat D

101 Finsbury Park Road, London

A beautifully refurbished one bedroom split-level garden flat, situated on the ground and first floor of this well maintained period property.

Accommodation comprises; large double bedroom, modern bathroom, fully fitted kitchen with integrated appliances, living room and a private garden. Finsbury Park Road from Highbury Barn and the highly renowned local amenities, including Godfreys butchers, La Fromagerie, Da Mario's Deli, Highbury Fishmongers and Highbury Vintners all of which are hugely popular with locals as well as drawing those from further afield. The green spaces of Clissold Park are moments away as is the highly sought after Stoke Newington Church Street.

Upper Street is within easy reach, and transport links are some of the best around with Arsenal station providing the Piccadilly line and Finsbury Park offering overground services (including the Thameslink network serving the City and Gatwick Airport) alongside direct links to Moorgate as well as underground services on the Victoria line. Numerous bus routes offer effortless transport to the City and West End whilst international links are facilitated from St Pancras.

Council Tax band: C

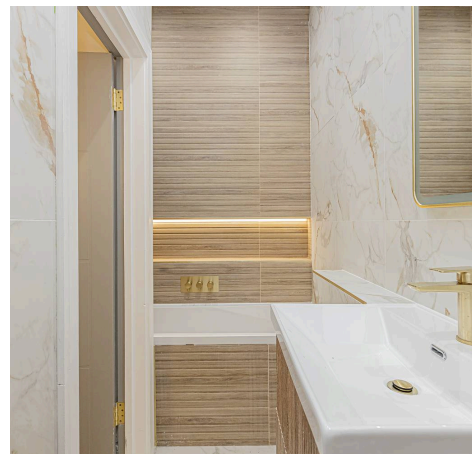
Tenure: Leasehold

EPC Energy Efficiency Rating -

EPC Environmental Impact I

• Private Garden

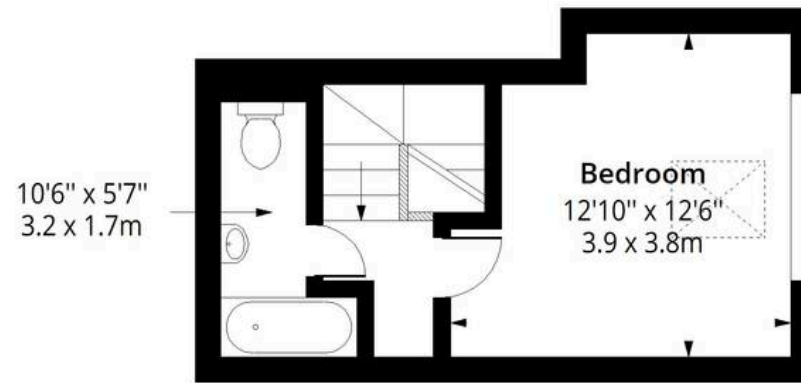
• Split Level



**NATHAN K**  
REAL ESTATE  
#NO1PROPERTYFINDER

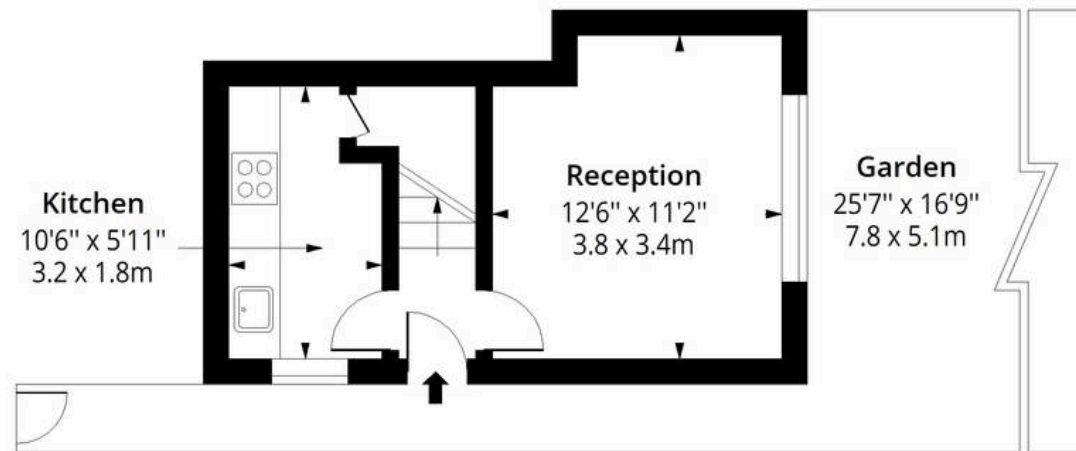
# Finsbury Park Road, N4

Approx. Gross Internal Area 485 Sq Ft - 45.06 Sq M



## First Floor

Floor Area 246 Sq Ft - 22.85 Sq M



## Ground Floor

Floor Area 239 Sq Ft - 22.20 Sq M



Measured according to RICS IPMS2. Floor plan is for illustrative purposes only and is not to scale. Every attempt has been made to ensure the accuracy of the floor plan shown, however all measurements, fixtures, fittings and data shown are an approximate interpretation for illustrative purposes only. 1 sq m = 10.76 sq feet.

lpaplus.com

Date: 11/6/2026



## Nathan K Real Estate

65 Amwell Street, London - EC1R 1UR

02034111143 • [ec1@nathankrealestate.com](mailto:ec1@nathankrealestate.com) • [nathankrealestate.com](http://nathankrealestate.com)

