



Price

£1,600 PCM

Fees Apply



Available 13/06/26

Flatsheet Road
Aylesham CT3

Wards
Helping you move forwards



Main Features

- 3 bedroom detached house
- Private garden
- En-suite and downstairs WC
- Spacious family home
- Open house event
- Alternative deposit available



Deposit required is £1,846.15
- Council Tax Band C

Renting a property is a big commitment and we recommend that you visit the local authority website and these websites which offer helpful information and advice about letting

www.gov.uk/government/publications/how-to-rent

www.gov.uk/private-renting

www.wardsofkent.co.uk/letting/our-tenancy-fees/

www.gov.uk/green-deal-energy-saving-measures

Call Swale 01795 591916 ■ wardsofkent.co.uk

IMPORTANT INFORMATION: Please note that administration fees are charged in addition to the rent and security deposit. Please contact our Lettings Team who will confirm the total costs involved in renting this property. For clarification, we wish to inform the prospective tenant that we have prepared these details as a general guide. The agent has not carried out a detailed survey nor tested the services, appliances, or specific fittings (unless otherwise stated), and no warranty can be given as to their condition. All room measurements are taken at floor level. We strongly recommend that all the information which we provide about the property is verified by yourself and your advisers. The contents of this publication are © Wards, 2015. Wards is a trading name of Arun Estates Limited Registered in England No. 2597969

Accommodation

GROUND FLOOR

Entrance Hall

WC

Lounge: 4.94m x 3.17m 16'2" x 10'5"

Dining Room: 3.03m x 2.56m 9'11" x 8'5"

Kitchen: 2.23m x 3.70m 7'4" x 12'2"

FIRST FLOOR

Bedroom 1: 2.84m x 5.35m 9'4" x 17'7"

En-suite: 1.85m x 1.90m 6'1" x 6'3"

Landing

Bedroom 2: 1.34m x 3.23m 4'5" x 10'7"

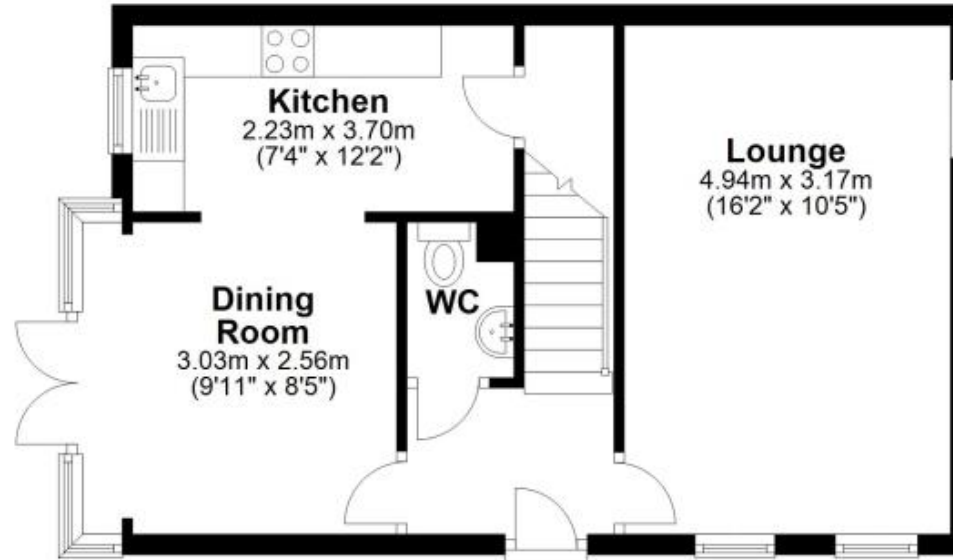
Bedroom 3: 2.23m x 2.09m 7'4" x 6'10"

Bathroom



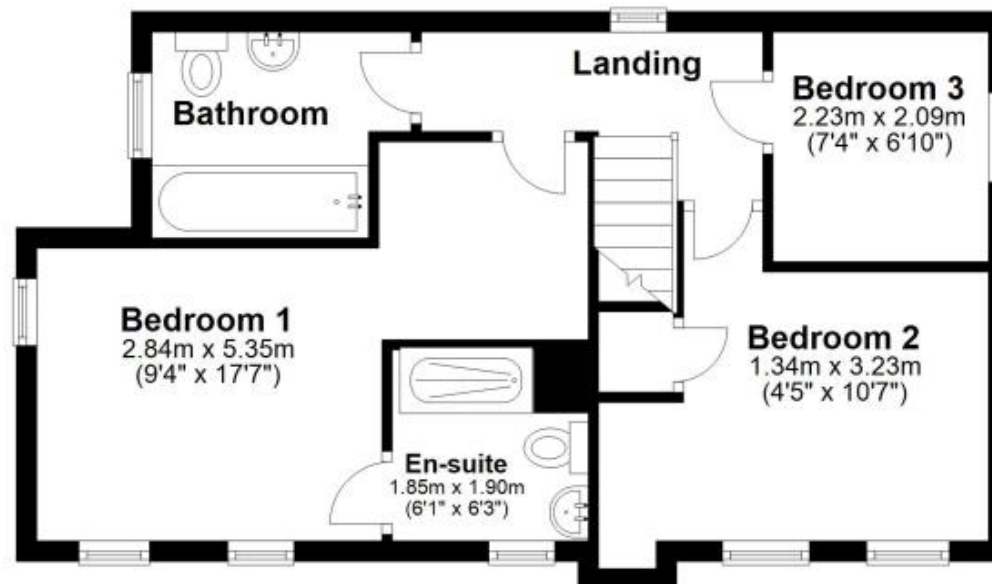
Ground Floor

Approx. 42.2 sq. metres (454.8 sq. feet)



First Floor

Approx. 43.9 sq. metres (472.8 sq. feet)



Total area: approx. 86.2 sq. metres (927.6 sq. feet)