



Jubilee Street, E1

£400,000

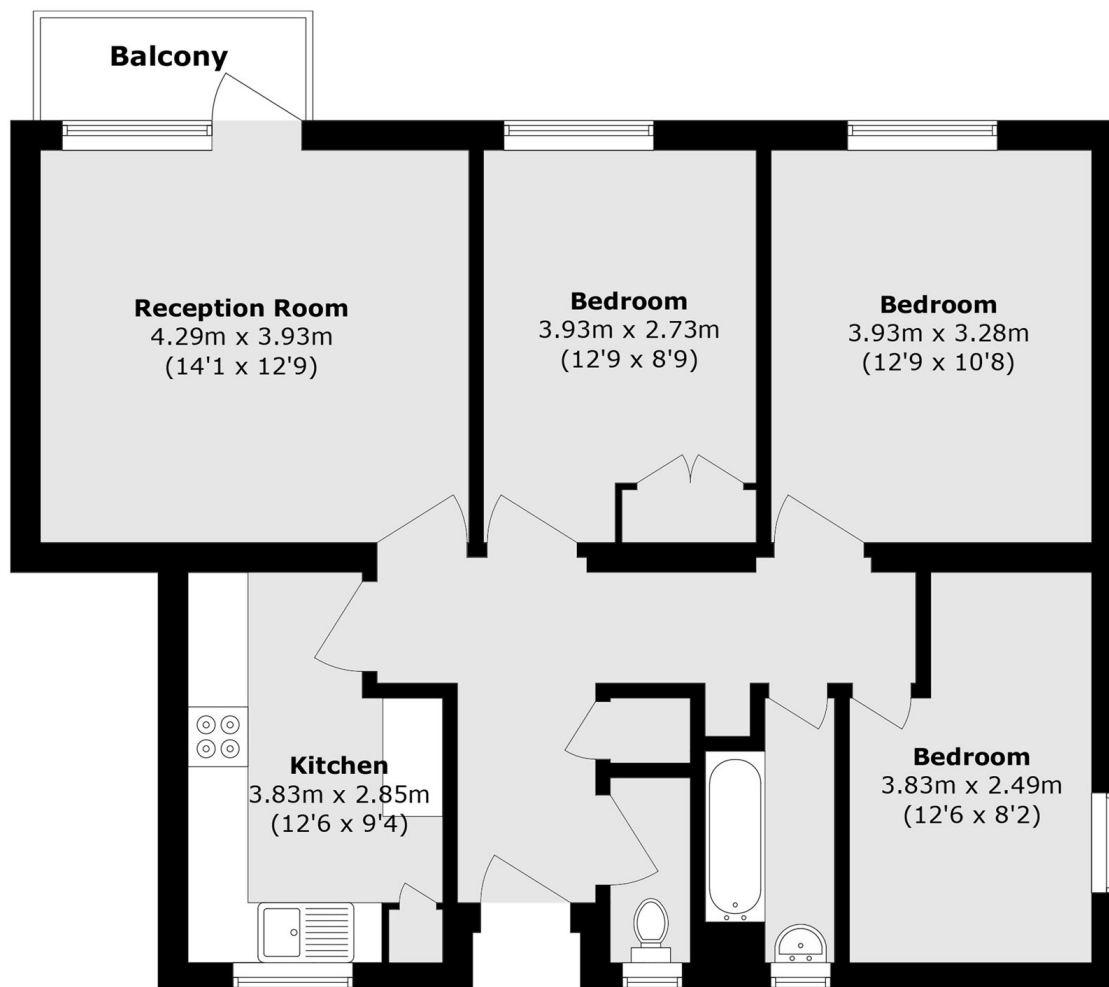
A well proportioned flat in a secure building with lift access. This home offers three double bedrooms, a generous reception leading to a private balcony and a separate kitchen.

Located close to a vibrant array of local amenities, including bars, restaurants, and markets, this home is within walking distance of renowned destinations such as Brick Lane, Spitalfields, Liverpool Street Station, Tower Hill, and Aldgate offering excellent transport links to the City, Canary Wharf, and beyond.

Features

- Chain Free
- Separate Kitchen
- Private Balcony
- Secure Communal Entrance
- Lift Access

Jubilee Street,
London, E1



Total area (approx.): 78.8 sq. m (848.2 sq. ft)

Balcony area (approx.): 2.7 sq. m (29.1 sq. ft)