



Gloucester Avenue, NW1

£496 Per week

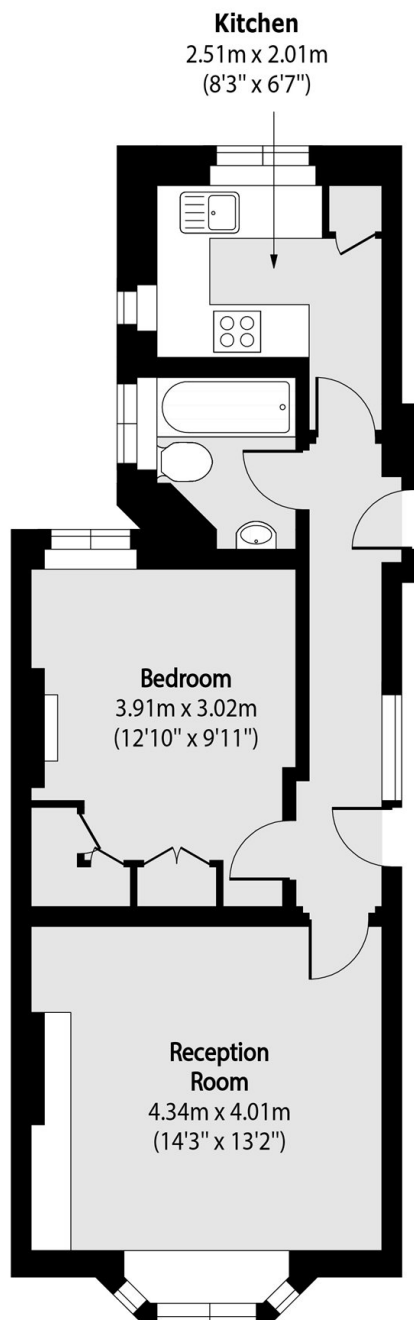
A well presented one-bedroom flat on Gloucester Avenue, in Primrose Hill, offering a bright living area, separate kitchen, spacious bedroom, and a clean, well-maintained bathroom. Ideally located close to Regent's Park with excellent transport links and local amenities nearby.

Parkside Court is located moments from Regent's Park and the amenities in Camden. As well as a short walk from Primrose Hill and the high street.

Features

- One Bedroom
- Separate Kitchen
- Modern Bathroom
- Bright Reception
- First Floor Apartment
- Great Location

Gloucester Avenue, London, NW1



Total area (approx): 43.94 sq m (473 sq. ft)