



The Chequers, Burlington Road, Swanage BH19 1LR

£159,950

MOLLARO
DORSET & NEW FOREST ESTATE AGENTS



CHARMING ONE BEDROOM APARTMENT WITH FAR REACHING SEA VIEWS, JUST STEPS FROM THE BEACH

Located on the second floor of a well-maintained character building, this inviting one-bedroom apartment offers reaching sea views across Swanage Bay towards the Isle of Wight. Perfect as a coastal retreat or low-maintenance home, it's ideally positioned just a two-minute walk from the sandy beach, with the added benefit of allocated off-road parking.

The building itself is attractive and well cared for, featuring a secure entry phone system and neat communal areas inside and out. From the entrance hall, you're greeted by a bright and spacious lounge/diner, flooded with natural light from a dormer window that frames the delightful sea views beautifully, making an ideal spot to relax and unwind. There's ample room for both lounge seating and a dining area.

The compact kitchen offers everything you need, with fitted base units, good worktop space and integrated electric oven with gas hob and extractor. There's also dedicated under-counter space for a washing machine, fridge and freezer. The south-facing double bedroom is a peaceful haven, featuring a stylish mirrored double wardrobe and generous eaves storage. The fully tiled bathroom includes a bath with overhead shower and screen, while the separate cloakroom contains a WC, wash basin and Velux roof light for natural illumination.

Outside, residents enjoy attractive communal gardens with central lawn and colourful flower beds, plus a useful communal washing line and bin storage area located near the parking facilities.

Altogether a charming apartment in a much sought-after position.



KEY FEATURES

- Sea View Apartment with Views of Swanage Bay to the Isle of Wight
 - Second Floor
 - One Double Bedroom
 - Gas Central Heating
 - Share of Freehold
 - Communal Garden
 - Allocated Off Road Parking
 - Short Walk to Beach
- Close to Shops, Facilities, Restaurants & Transport Links of Swanage
 - Ideal First Time Buy or Buy to Let



ADDITIONAL INFORMATION

Tenure: Share of Freehold
(999 year lease from 2017)

Ground Rent: Nil

Maintenance: £265 per quarter (£1,060 per annum)

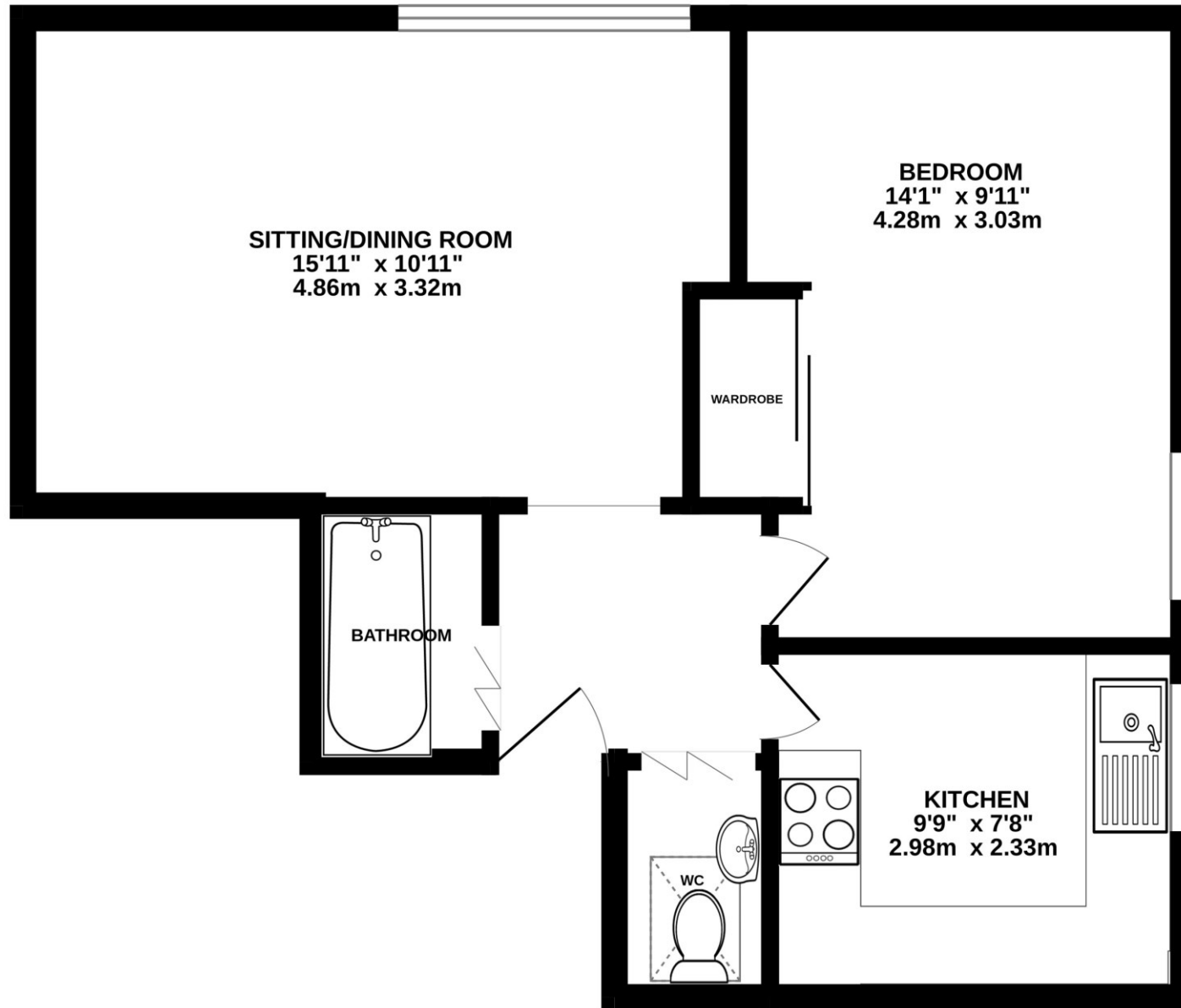
Long Lets Permitted, Holiday Lets **NOT** Permitted
Pets at the Discretion of the Management Company

Council Tax: Band A - Dorset Council





FLOORPLAN







Viewing by Appointment Through the Vendor's Sole Agent

Mollaro Ltd ▪ Briggs House ▪ 26 Commercial Road ▪ Ashley Cross ▪ Poole ▪ BH14 0JR
01202 80 50 90 ▪ hello@mollaro.com

Energy Efficiency Rating		
	Current	Potential
Very energy efficient - lower running costs		
(92-100) A		
(81-91) B		
(69-80) C	74	74
(55-68) D		
(39-54) E		
(21-38) F		
(1-20) G		
Not energy efficient - higher running costs		
England, Scotland & Wales	EU Directive 2002/91/EC	

Registered in England & Wales Company No. 14891790. PLEASE NOTE: Measurements quoted are approximate and for guidance only. Fixtures and fittings, services and appliances have not been tested and therefore no guarantee can be given that they are in working order. Images have been produced for information and it cannot be inferred that any items shown is included with the property. These particulars are believed to be correct but their accuracy is not guaranteed and they do not constitute an offer or form part of a contract. Solicitors are specifically requested to verify the sales particulars details in the pre contract enquiries in particular price, local and other services.