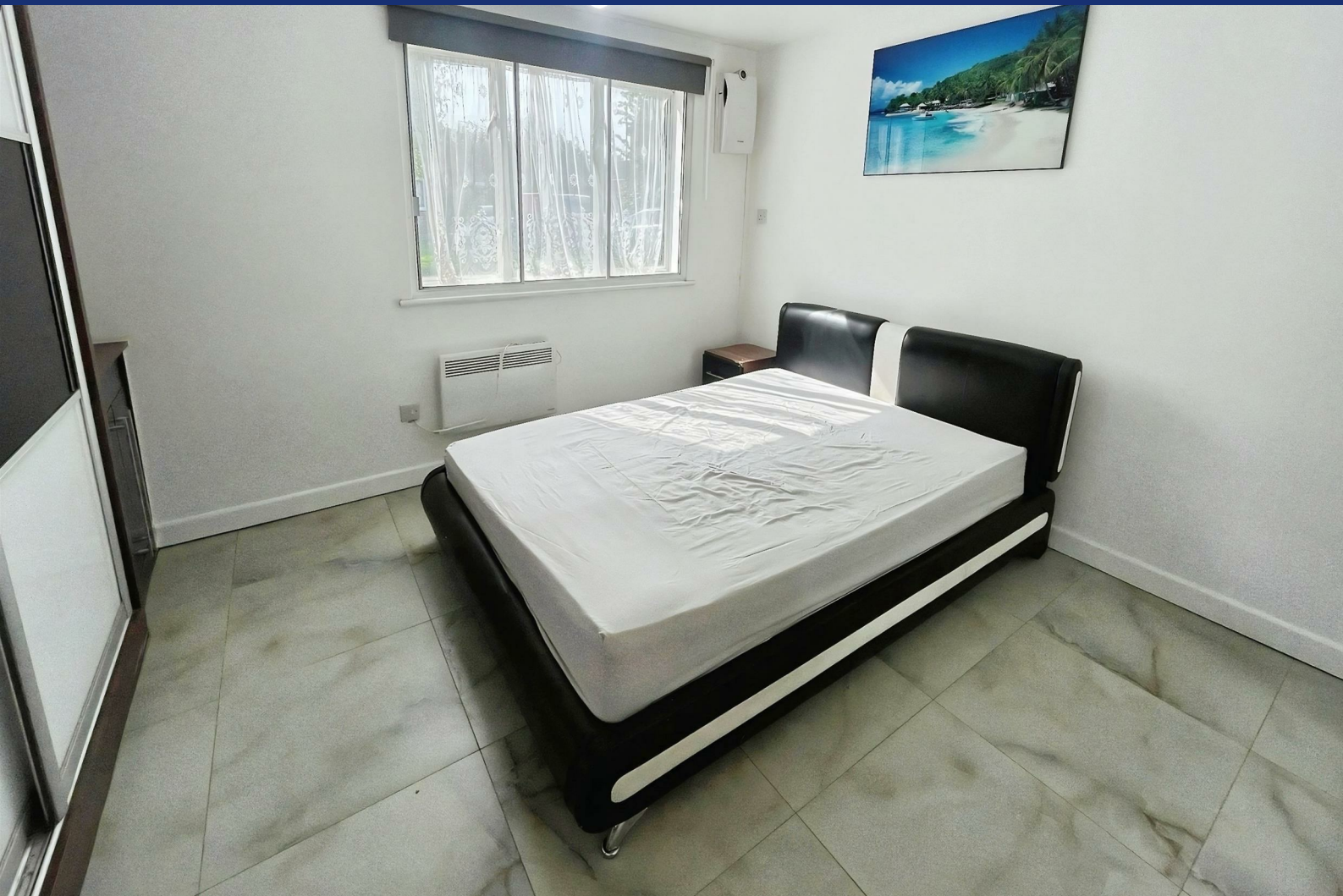


# HUNTERS<sup>®</sup>

HERE TO GET *you* THERE



## Pickwick Close

Hounslow, TW4 5ED

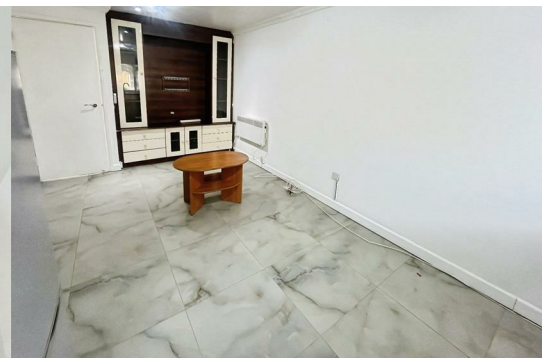
£1,800 Per Month



A spacious and well-presented two-bedroom ground floor apartment situated Hounslow. The property features a bright and airy reception room, a modern open-plan kitchen, two well-proportioned bedrooms, and ample storage throughout. Residents also benefit from access to well-maintained communal gardens.

Ideally suited to a small family or two professional sharers, the apartment offers both comfort and convenience in a highly sought-after location.

Positioned just moments from Hounslow Central Station (Piccadilly Line), the property provides excellent transport links into Central London and Heathrow. Local amenities including ASDA, Hounslow High Street, and Lampton Park are all within easy walking distance, offering a wide range of shopping, dining, and leisure options.



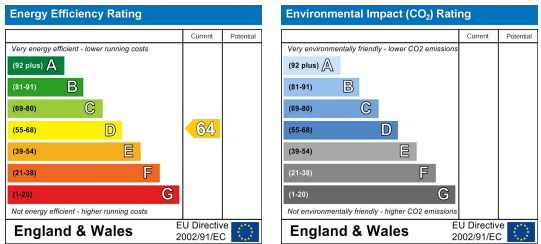
### Area Map



### Floor Plans



### Energy Efficiency Graph



These particulars are intended to give a fair and reliable description of the property but no responsibility for any inaccuracy or error can be accepted and do not constitute an offer or contract. We have not tested any services or appliances (including central heating if fitted) referred to in these particulars and the purchasers are advised to satisfy themselves as to the working order and condition. If a property is unoccupied at any time there may be reconnection charges for any switched off/disconnected or drained services or appliances - All measurements are approximate. **THINKING OF SELLING?** If you are thinking of selling your home or just curious to discover the value of your property, Hunters would be pleased to provide free, no obligation sales and marketing advice. Even if your home is outside the area covered by our local offices we can arrange a Market Appraisal through our national network of Hunters estate agents.