



Bramshot Avenue, SE7

£755,000

Set on a popular residential road, this impressive four bedroom Edwardian end-of-terrace house is arranged over three floors and offers being sold with no further chain and a large private garden.

Perfectly located for Westcombe Park Station, this home offers excellent transport links with direct services into London Bridge, Cannon Street and City Thameslink, ensuring a quick and easy commute into Central London. Bramshot Avenue is a highly sought-after residential street, surrounded by local shops and excellent primary schools, making it an ideal location for families.

Features

- Four Double Bedrooms
- Two Reception Rooms
- Three Bathrooms
- Large Garden
- Period Features
- No Chain



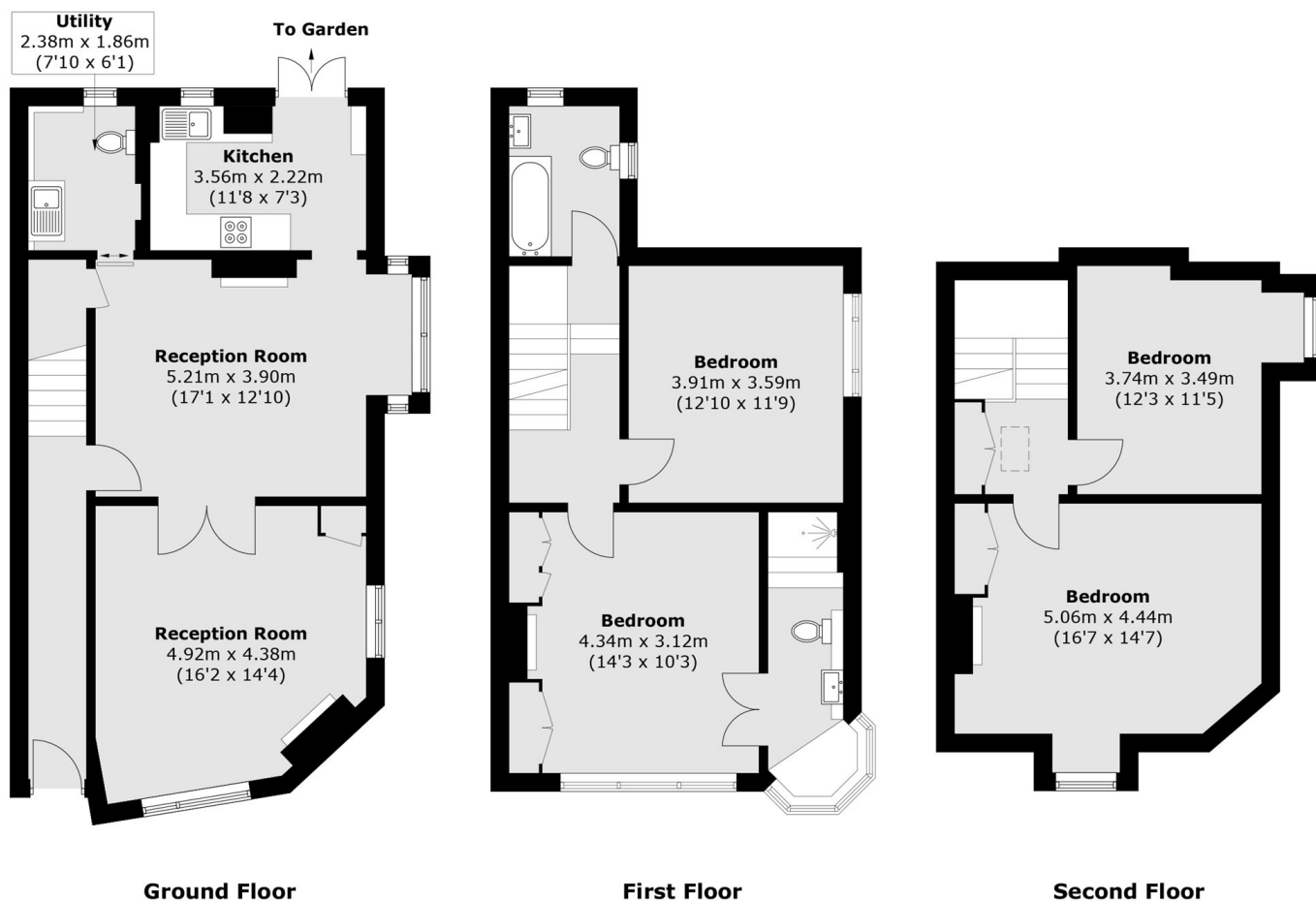
Bramshot Avenue, SE7

The ground floor comprises two well-proportioned reception rooms, ideal for both entertaining and family living, alongside a separate fitted kitchen and a useful utility room providing additional storage.

On the first floor are two spacious double bedrooms, one benefiting from an en suite, as well as a modern family bathroom. The top floor offers a further two double bedrooms, making this an ideal home for growing families or those needing flexible work-from-home space.



Bramshot Avenue, London, SE7



Total area (approx.): 153.9 sq. m (1,656.6 sq. ft)