



Apartment 80 Waterside Court, The Colonnade, Maidenhead SL6 1DL

welcome to

Apartment 80 Waterside Court, The Colonnade, Maidenhead

This stunning two bedroom, two bathroom upper floor apartment forms part of the ever-popular Waterside Quarter canalside development and offers spacious, contemporary living in excess of 800 sq ft.

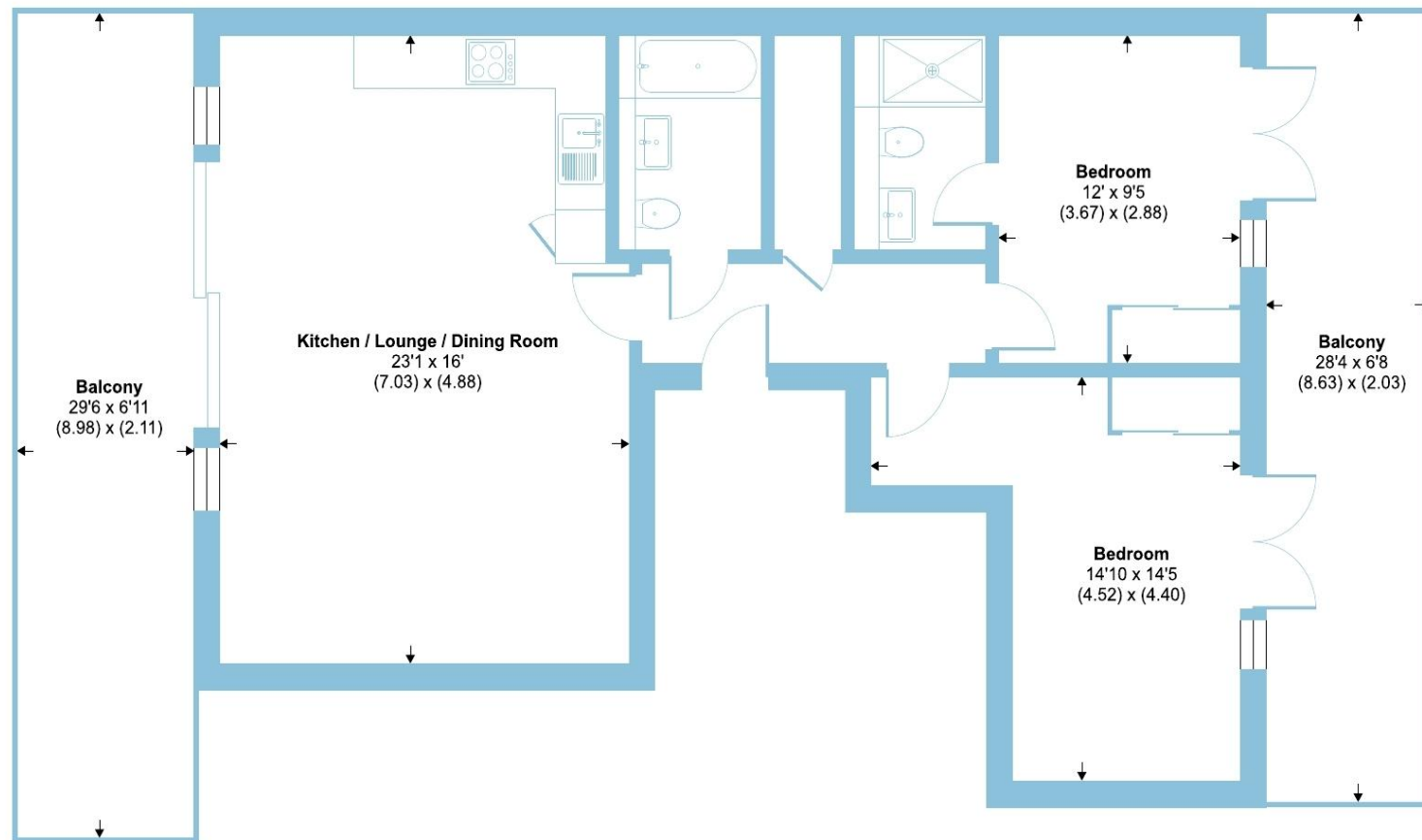




Waterside Court, The Colonnade, Maidenhead, SL6

Approximate Area = 818 sq ft / 75.9 sq m

For identification only - Not to scale



EIGHTH FLOOR

This stunning upper floor apartment forms part of the ever-popular Waterside Quarter canalside development and offers spacious, contemporary living in excess of 800 sq ft. One of the larger designs within the building, the apartment is beautifully presented throughout and benefits from two generous balconies, enhancing both the living space and bedrooms.

Accessed via a secure entry system, the building boasts well-maintained communal areas and a lift serving all floors. Internally, a welcoming and spacious hallway leads to a superb 23ft open-plan living area, ideal for both relaxing and entertaining. The stylish modern kitchen features an island unit and integrated appliances, while large doors open directly onto a substantial balcony with far reaching views.

The principal bedroom is well-proportioned and includes fitted wardrobes, a sleek en-suite shower room and direct access to the balcony. The second bedroom also offers fitted wardrobes, balcony access, and is served by a contemporary family bathroom finished to a high standard.

Further benefits include secure underground parking and excellent overall presentation, making this an ideal purchase for both owner-occupiers and investors. Combining space, style and a sought-after waterside location, this exceptional apartment represents a rare opportunity within the development.

welcome to

Apartment 80 Waterside Court

- STUNNING UPPER FLOOR APARTMENT
- TWO DOUBLE BEDROOMS - WITH BALCONY ACCESS
- EN-SUITE TO MAIN BEDROOM
- OPEN PLAN LIVING/KITCHEN WITH BALCONY ACCESS
- SECURE UNDERGROUND PARKING
- WATERSIDE TOWN CENTRE LOCATION
- SOUGHT AFTER DEVELOPMENT
- MINUTES FROM SHOPS AND STATION

Tenure: Leasehold EPC Rating: B

Council Tax Band: C Service Charge: 3000.00

Ground Rent: None

This is a Leasehold property with details as follows; Term of Lease 250 years from 01 Jul 2020. Should you require further information please contact the branch. Please Note additional fees could be incurred for items such as Leasehold packs.

£535,000



Please note the marker reflects the postcode not the actual property

check out more properties at rogerplatt.co.uk



Property Ref:
MHD123520 - 0001

1. MONEY LAUNDERING REGULATIONS Intending purchasers will be asked to produce identification documentation at a later stage and we would ask for your co-operation in order that there is no delay in agreeing the sale. 2. These particulars do not constitute part or all of an offer or contract. 3. The measurements indicated are supplied for guidance only and as such must be considered incorrect. Potential buyers are advised to recheck measurements before committing to any expense. 4. We have not tested any apparatus, equipment, fixtures or services and it is in the buyers interest to check the working condition of any appliances. 5. Where an EPC, or a Home Report (Scotland only) is held for this property, it is available for inspection at the branch by appointment. If you require a printed version of a Home Report, you will need to pay a reasonable production charge reflecting printing and other costs. 6. We are not able to offer an opinion either written or verbal on the content of these reports and this must be obtained from your legal representative. 7. Whilst we take care in preparing these reports, a buyer should ensure that his/her legal representative confirms as soon as possible all matters relating to title including the extent and boundaries of the property and other important matters before exchange of contracts.

Roger Platt is a trading name of Sequence (UK) Limited which is registered in England and Wales under company number 4268443, Registered Office is Cumbria House, 16-20 Hockliffe Street, Leighton Buzzard, Bedfordshire, LU7 1GN. VAT Registration Number is 500 2481 05.


roger platt



01628 773333



Maidenhead@rogerplatt.co.uk



25-29 Queen Street, MAIDENHEAD, Berkshire,
SL6 1NB



rogerplatt.co.uk