



Bermondsey Street, SE1 £675,000

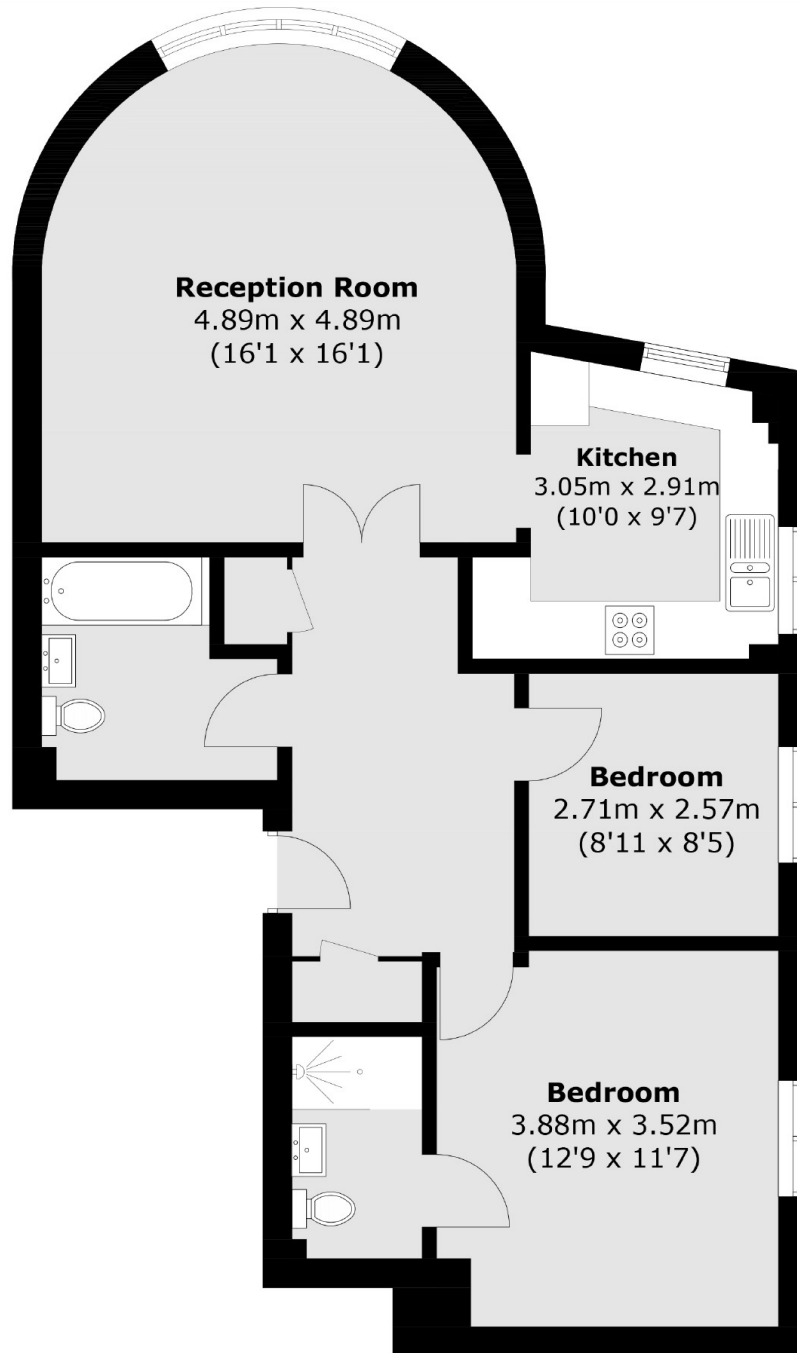
A highly attractive modern apartment with hard wood floors, a very spacious living room and a separate fully fitted kitchen and breakfast bar, two generous double bedrooms and two bathrooms, plus secure off-street parking and communal gardens.

Enviably located on Bermondsey Street with easy access to all of Bermondsey Streets many shops and restaurants, London Bridge Station, the South Bank, the Shard, Maltby Street Market and Borough Market.

Features

- Modern Development
- Spacious Living Space
- Separate Kitchen
- Two Double Bedrooms
- Two Bathrooms
- Secure Gated Parking

Bermondsey Street,
London, SE1



Total area (approx.): 73.3 sq. m (788.9 sq. ft)