



## Folgate Street, E1

£750,000

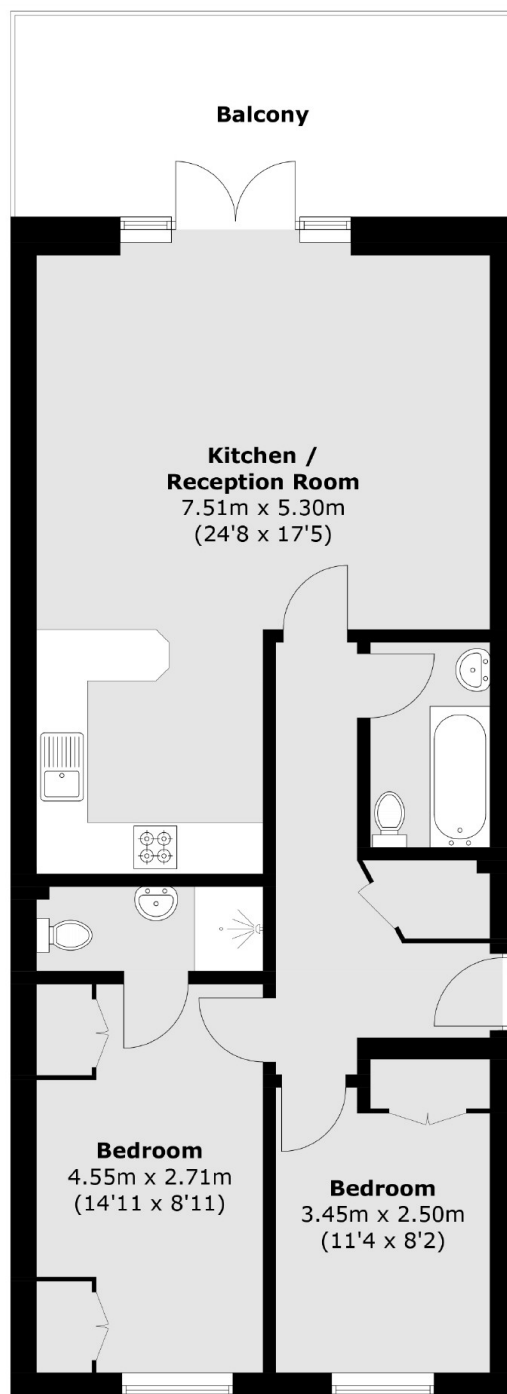
A two-bedroom, two-bathroom apartment located on the first floor of this period development. This apartment offers a large open plan kitchen/living room, two double bedrooms, one with an en-suite bathroom, a modern family bathroom, plenty of built-in storage, and wooden floors throughout.

Folgate Street is a cobbled stoned street located on the edge of Spitalfields Market. The location offers a wide range of fashionable shops, bars, restaurants, entertainment and transport links in Brick Lane, Liverpool Street and Shoreditch.

### Features

- Two Bedrooms
- Two Bathrooms
- Sought after location
- Secure underground parking
- Day time porter
- Private Balcony

# Folgate Street, London, E1



Total area (approx.): 70.5 sq. m (758.8 sq. ft)  
Balcony: 13.7 sq. m (147.5 sq. ft)