



## Judd Street, WC1H

£2,816 Per calendar month

A spacious two double bedroom apartment in well maintained Art Deco building with a porter and lift in the building. It has a large reception with a semi-open plan kitchen and spacious bathroom with shower over bath.

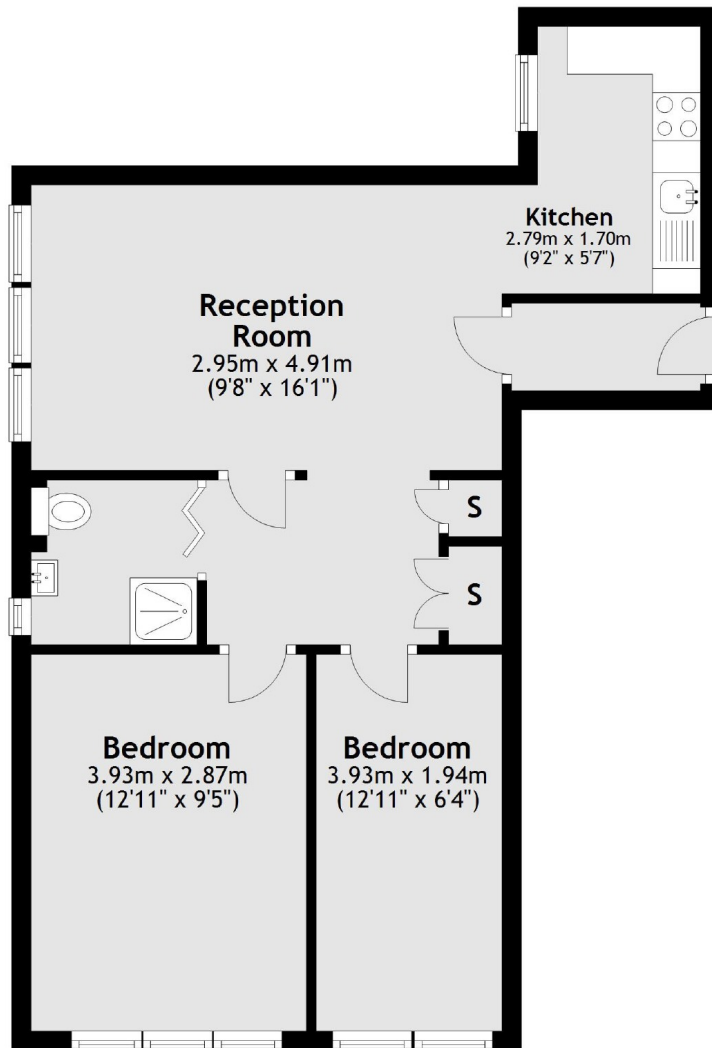
Clare Court is a listed art deco block situated but set back from Judd Street in central Bloomsbury. The tube station of Russell Square and Kings Cross are both convenient and nearby. Perfect location for students at UCL, LSE or SOAS.

### Features

- Two Bedroom Flat
- Reception Room
- Lift Access
- Separate Kitchen
- Porter
- Furnished

# Judd Street, London, WC1H

## First Floor



Total area: approx. 50.5 sq. metres (543.3 sq. feet)