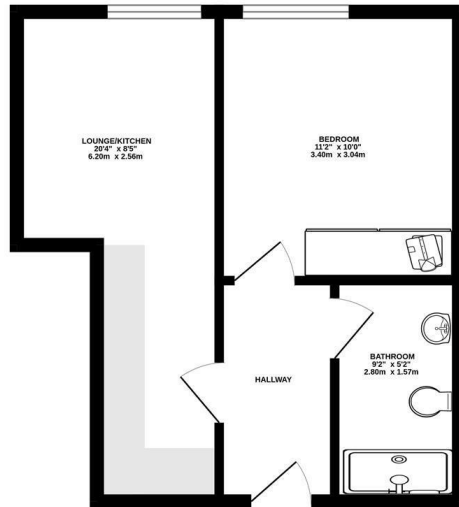




**Keith  
Ashton**

Hubert Road,  
Brentwood

FIFTH FLOOR  
338 sq.ft. (31.4 sq.m.) approx.



TOTAL FLOOR AREA : 338 sq.ft. (31.4 sq.m.) approx.  
Measurements are approximate. Not to scale. Measurements provided only.  
Made with LettingPro ©2020

£200,000



## Regent House, Hubert Road, Brentwood, CM14 4WN

We are delighted to present this stylish fifth floor apartment, ideally located just moments from Brentwood High Street and the mainline railway station, providing excellent links into London and beyond.

Offered with no onward chain, The current vendor purchased the apartment from new, ensuring it has been well maintained and thoughtfully cared for throughout.

The accommodation comprises a welcoming entrance hall, a bright open-plan living area with a sleek contemporary kitchen and integrated appliances, a spacious double bedroom with built-in wardrobes, and a modern shower room.

Set within a sought-after modern development, residents enjoy secure parking within a permit-controlled car park, with the flat benefitting from its own parking space. Additional features include a concierge service, secure entry system, and lift access to all floors. Combining style, convenience, and superb connectivity, this apartment is an excellent home or investment opportunity in the heart of Brentwood.



Energy Efficiency Rating			Environmental Impact (CO <sub>2</sub> ) Rating		
Very energy efficient - lower running costs	Current	Potential	Very environmentally friendly - lower CO <sub>2</sub> emissions	Current	Potential
(81-91) <b>A</b>			(81-91) <b>A</b>		
(69-80) <b>B</b>			(69-80) <b>B</b>		
(55-68) <b>C</b>			(55-68) <b>C</b>		
(39-54) <b>D</b>			(39-54) <b>D</b>		
(21-38) <b>E</b>			(21-38) <b>E</b>		
(9-20) <b>F</b>			(9-20) <b>F</b>		
(1-8) <b>G</b>			(1-8) <b>G</b>		
Not energy efficient - higher running costs			Not environmentally friendly - higher CO <sub>2</sub> emissions		
EU Directive 2002/91/EC			EU Directive 2002/91/EC		
England & Wales			England & Wales		

### SERVICES:

Local Authority: Brentwood  
Council tax band: B  
Post code: CM14 4WN

### VIEWING:

Strictly by prior arrangement with Keith Ashton Estate Agents

### OPENING HOURS:

Monday to Friday: 8.45AM - 6.30PM | Saturdays: 9AM - 5.30PM | Sundays: 10AM - 2PM

**MORTGAGE INFORMATION:** We offer the additional facility of an in-house Independent Financial Adviser who will access all mortgage lenders with the purpose of providing you with the benefit of choice. For quotations or comparables please call 01277 260858 or visit our interactive website at [www.mortgagebusiness.net](http://www.mortgagebusiness.net)



We the Agent have not tested any apparatus, fittings or services for this property. The plot size is intended merely as a guide and has not been officially measured or verified by the Agent. Photographs are for illustration only and may depict items which are not for sale or included in the sale of the property. As part of the service we offer we may recommend ancillary services to you which we believe may help you with your property transaction. We wish to make you aware, that should you decide to use these services we will receive a referral fee. For full and detailed information please visit 'terms and conditions' on our website [www.keithashton.co.uk](http://www.keithashton.co.uk)

Brentwood  
Tel. 01277 260858

Village Office  
Tel. 01277 375757

Lettings Office  
Tel. 01277 202200

Explore more @ [www.keithashton.co.uk](http://www.keithashton.co.uk)

