



**9 TUDOR CLOSE  
CHESSINGTON  
KT9 1BL  
OFFERS IN EXCESS OF  
£500,000**

**EXTENDED SEMI DETACHED HOUSE**

**THREE BEDROOMS**

**TWO RECEPTION ROOMS**

**8'6 X 7' KITCHEN**

**BATHROOM AND SHOWER ROOM**

**DOUBLE GLAZED WINDOWS**

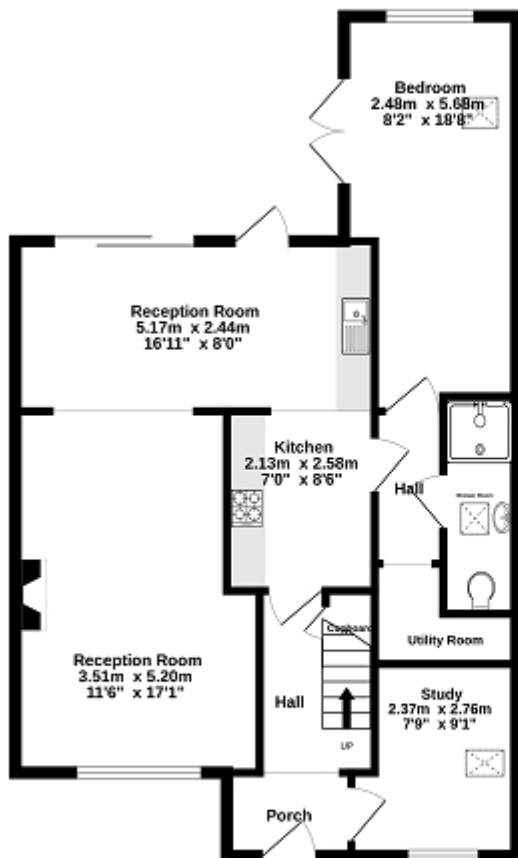
**GAS CENTRAL HEATING**

**38' X 25' WESTERLY FACING GARDEN**

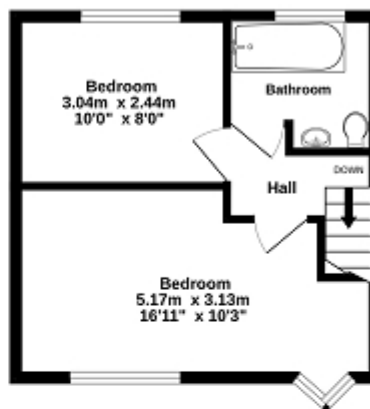
**OFF STREET PARKING**

**CUL DE SAC LOCATION**

Ground Floor  
67.7 sq.m. (729 sq.ft.) approx.



1st Floor  
27.0 sq.m. (291 sq.ft.) approx.



TOTAL FLOOR AREA: 94.7 sq.m. (1020 sq.ft.) approx.

While every attempt has been made to ensure the accuracy of the floorplan contained here, measurements of doors, windows, rooms and any other items are approximate and no responsibility is taken for any error, omission or mis-statement. This plan is for illustrative purposes only and should be used as such by any prospective purchaser. The services, systems and appliances shown have not been tested and no guarantee as to their operability or efficiency can be given.  
Made with Intropix ©2023

### Energy Efficiency Rating

	Current	Potential
Very energy efficient - lower running costs		
(92+) <b>A</b>		
(81-91) <b>B</b>		
(69-80) <b>C</b>		77
(55-68) <b>D</b>	60	
(39-54) <b>E</b>		
(21-38) <b>F</b>		
(1-20) <b>G</b>		
Not energy efficient - higher running costs		
<b>England, Scotland &amp; Wales</b>	EU Directive 2002/91/EC	

The energy efficiency rating is a measure of the overall efficiency of a home. The higher the rating the more energy efficient the home is and the lower the fuel bills will be.