

Howard Morley
& Sons



PCM

£5,500 PCM

White House Mews

Jacobs Well, GU4 7GD

PROPERTY SUMMARY

An handsome four double bedroom, four bathroom home finished to an executive specification.

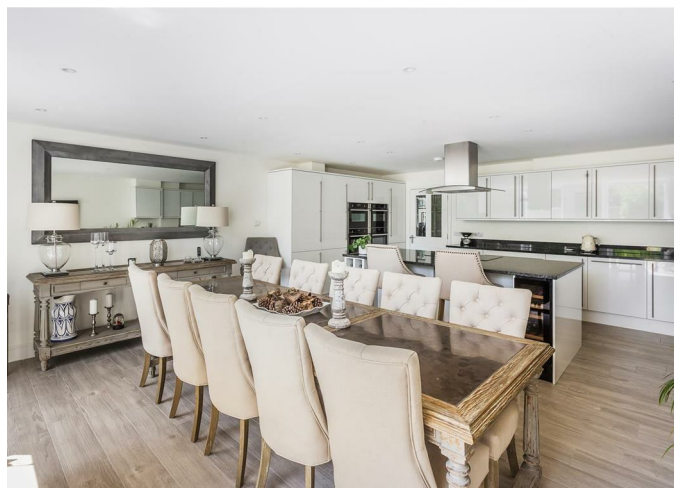
4



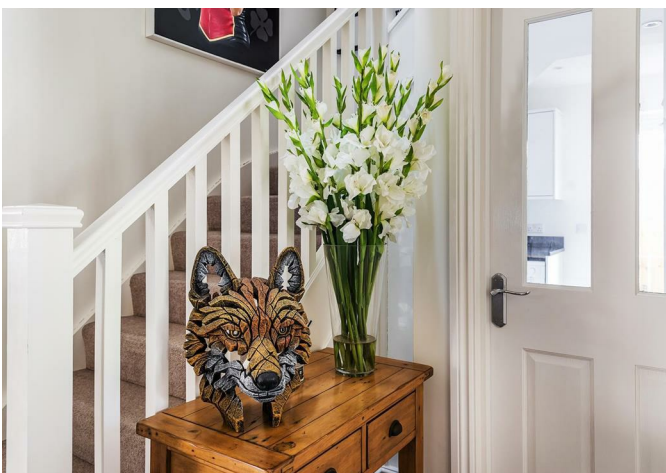
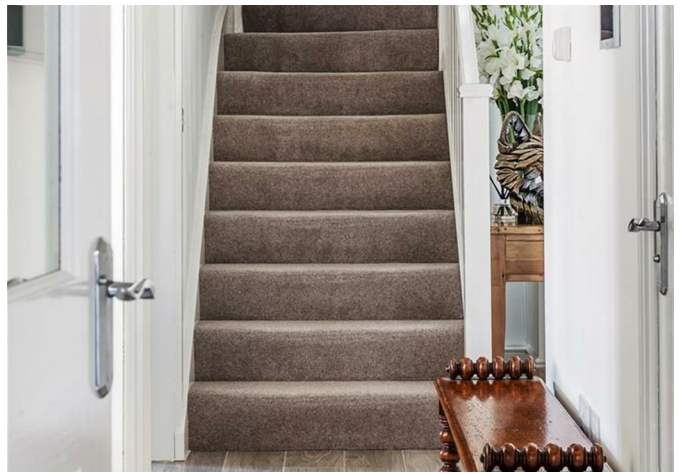
4



3











4 |

4 |

3 |

Energy Efficiency Rating		
	Current	Potential
Very energy efficient - lower running costs		
(92 plus) A		100
(81-91) B	90	
(69-80) C		
(55-68) D		
(39-54) E		
(21-38) F		
(1-20) G		
Not energy efficient - higher running costs		
England & Wales	EU Directive 2002/91/EC	

Agents Note: Whilst every care has been taken to prepare these particulars, they are for guidance purposes only. All measurements are approximate and are for general guidance purposes only and whilst every care has been taken to ensure their accuracy, they should not be relied upon and potential buyers/tenants are advised to recheck the measurements

	OFFICE ADDRESS 276 High Street Guildford Surrey GU1 3JL	OFFICE DETAILS 01483 575 304 lettings@hmorley.co.uk hmorley.co.uk
--	--	---