



WILL CAMPBELL

exp[®] UK

@ will.campbell@exp.uk.com

willcampbell.exp.uk.com

07518 198 785

Apartment 11, 33, Osiers Road,

Guide Price £535,000

2 2

Please Quote For All Enquiries: **WC0847** Guide Price £535,000 - £550,000

Set opposite Wandsworth Park and moments from the River Thames, this stylish two-bedroom, two-bathroom apartment offers generous space in a prime riverside location.

Located on the second floor of a modern development with lift access and secure underground parking, the apartment measures approximately 802 sq ft. The bright open-plan living space opens onto a private terrace, with a sleek fitted kitchen featuring integrated appliances and a breakfast bar.

The principal bedroom benefits from an en-suite and walk-in wardrobe, with a second double bedroom served by a modern family bathroom and excellent internal storage throughout.

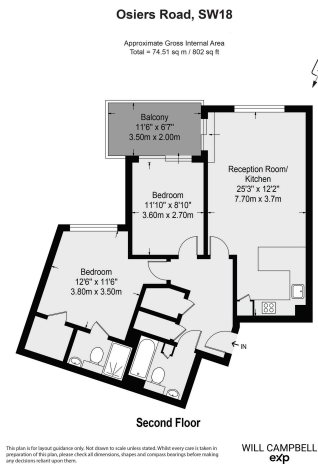


Floor Area: 802 sq. ft.

Tenure: Leasehold

Service Charge: £4814.04 per annum

Ground Rent: £350 per annum



eXp World UK Ltd is a registered company at Corporation Service Company (UK) Limited, 5 Churchill Place, 10th Floor, London, United Kingdom, E14 5HU. Registered company number is 12016573. VAT Registration Number is 327 4120 29