

Wills Road  
Bridgwater  
TA6 6UP



**JOSEPH CASSON**

the estate agency your home deserves



  
**JOSEPH  
CASSON**  
estate agency



£170,000

- Superbly Presented End Terraced Property
  - Two Bedrooms
- One Bathroom - Newly Installed
  - Living Room
- Kitchen/Diner -Newly Installed
  - Front & Rear Gardens
  - Parking
- Gas Central Heating
  - Double Glazing
- No Onward Chain

NO ONWARD CHAIN. Discover this recently improved two-bedroom end-terrace home, enjoying attractive views across the surrounding countryside. The property has been enhanced with a newly fitted kitchen/diner and bathroom, fresh décor throughout, and new carpets, creating a modern and welcoming living space ready to move straight into.

Conveniently situated just south of Bridgwater town centre, the property offers easy access to local amenities, transport links, and nearby countryside walks, making it an ideal purchase for first-time buyers, downsizers, or investors alike.

## ACCOMMODATION

This double-glazed, gas-centrally heated home features a welcoming living room and kitchen/diner on the ground floor. Upstairs boasts two bedrooms and a bathroom. Outdoors, you'll find a lawned front garden and an enclosed rear garden with lawn and seating areas. To the rear is space for one vehicle.

## LOCATION

Positioned South of Bridgwater's Town Centre, this established residential area has several local amenities and both primary & secondary schools close by. A short distance away, Bridgwater Town Centre offers a wide range of amenities and has excellent transport links to the M5 motorway and mainline rail link. To the West is the Quantock Hills, an Area of Outstanding Natural Beauty.

## ADDITIONAL INFORMATION

Tenure: Freehold

Estate/Management Charge: No

EPC Rating: C

Council Tax Band: A

### UTILITIES

Water supply: Mains

Sewerage: Mains

Electricity Supply: Mains

Mains Gas Supply: Yes

Central Heating: Yes - Gas

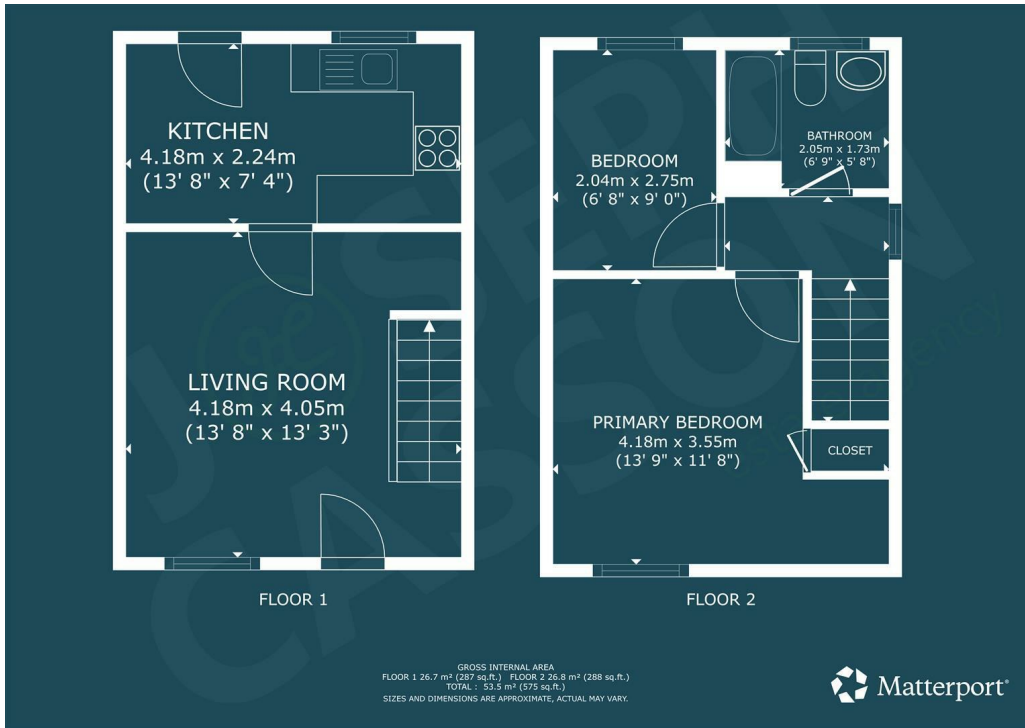
### FLOODING

No Flooding in the last 5 years. Flood Information: [flood-map-for-planning.service.gov.uk/location](https://flood-map-for-planning.service.gov.uk/location)

### BROADBAND & MOBILE COVERAGE

For an indication of specific speeds and supply or coverage in the





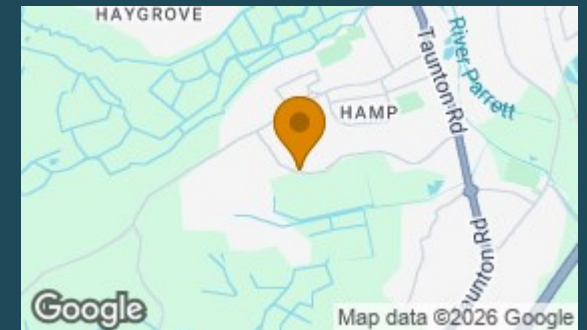
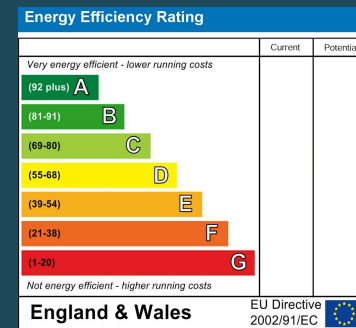
area, we recommend that potential buyers use the Ofcom checkers below:

[checker.ofcom.org.uk/en-gb/mobile-coverage](https://checker.ofcom.org.uk/en-gb/mobile-coverage)

[checker.ofcom.org.uk/en-gb/broadband-coverage](https://checker.ofcom.org.uk/en-gb/broadband-coverage)

### Council Tax Band

A



**Agents Note:** Whilst every care has been taken to prepare these particulars, they are for guidance purposes only. All measurements are approximate and are for general guidance purposes only and whilst every care has been taken to ensure their accuracy, they should not be relied upon and potential buyers/tenants are advised to recheck the measurements



Joseph Casson Estate Agency -  
Bridgwater  
1 Friarn Lawn  
Bridgwater  
Somerset  
TA6 3LL

Contact  
01278258005  
office@josephcasson.co.uk  
www.josephcasson.co.uk



**JOSEPH CASSON**

the estate agency your home deserves