



**BEAUFORT GARDENS SLOANE SQUARE SW3**  
**£750 PER WEEK** AVAILABLE 27/03/2026

**Hamptons**

THE HOME EXPERTS

# { THE PARTICULARS

Beaufort Gardens Sloane Square  
SW3

£750 Per Week  
Furnished

 1 Bathroom  
 1 Reception

## Features

- Manhattan Style Studio, - Fully Furnished,  
- Available Now!, - Prime Knightsbridge  
Location, - EPC Rating - C, - - Council tax  
band D

## Council Tax

Council Tax Band C

Hamptons  
7 Lower Sloane Street  
Sloane Square, London, SW1W 8AH  
020 7824 8242  
sloanesquarelettings@hamptons.co.uk  
www.hamptons.co.uk

# { ELEGANT KNIGHTSBRIDGE LIVING MOMENTS FROM HARRODS & HYDE PARK

## The Property

This exceptional apartment combines stylish living with an unbeatable location, offering effortless access to some of the world's finest shopping destinations, including Harrods. Designed for comfort and convenience, the property features a modern air cooling system, ensuring a pleasant living environment throughout the year. Finished to a high specification, the apartment boasts premium Gaggenau appliances, impressive ceiling heights, and expansive windows that flood the space with natural light, creating a bright and inviting atmosphere. Perfectly suited to a single professional or a couple, this beautifully maintained home offers both sophistication and practicality in one of the area's most sought-after locations. Contact our team today to arrange a viewing.

## Location

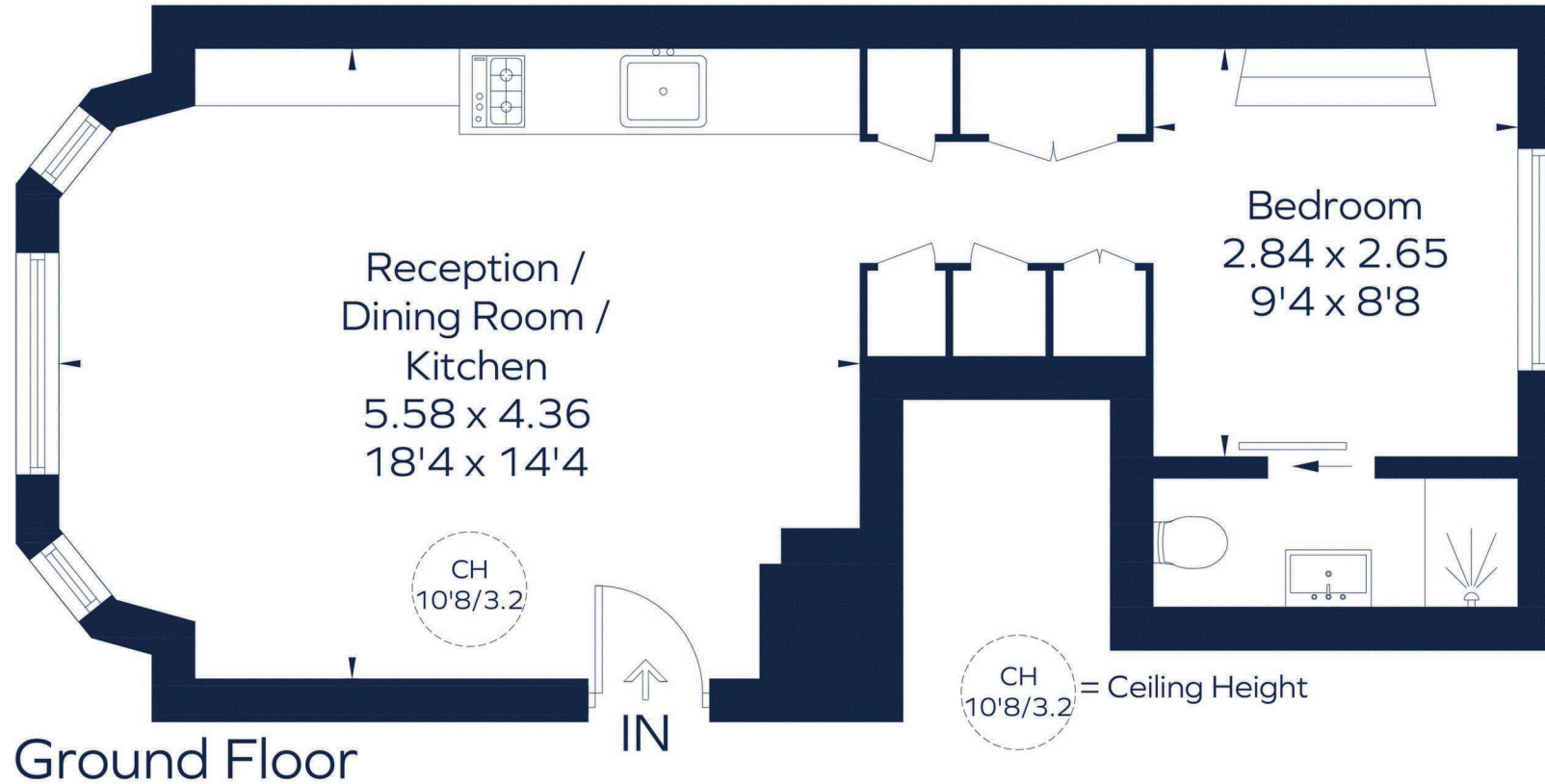
Ideally positioned on the prestigious Beaufort Gardens, this property enjoys a prime setting in the heart of Knightsbridge, one of London's most desirable neighbourhoods. Located just moments from the world-renowned Harrods, residents benefit from immediate access to an exceptional array of luxury boutiques, fine dining establishments, and vibrant cafés. Excellent transport links are available via nearby Knightsbridge Underground Station (Piccadilly Line), providing direct connections across Central London and to Heathrow Airport.



# BEAUFORT GARDENS

Approximate Gross Internal Area

408 sq. ft. (37.9 sq. m.)



This plan is for layout guidance only. Not drawn to scale unless stated. Windows and door openings are approximate. Whilst every care is taken in the preparation of this plan, please check all dimensions, shapes and compass bearings before making any decisions reliant upon them. ID 1284513

## For Clarification

We wish to inform prospective tenants that we have prepared these particulars as a general guide and they have been confirmed as accurate by the landlord. We have not verified permissions, nor carried out a survey, tested the services, appliances and specific fittings. Room sizes are approximate and measurement figures rounded: they are taken between internal wall surfaces and therefore include cupboards/shelves, etc. Accordingly, they should not be relied upon for

carpets and furnishings. It should also be noted that all fixtures and fittings, carpeted, curtains/blinds, kitchen equipment and garden statuary, whether fitted or not, are deemed removable by the landlord unless specifically itemised with these particulars. Please enquire in office or on our website for details on holding deposit and tenancy deposit figures.

