



Connells

Weston Drive
Tipton



Property Description

Prepare to fall head over heels for this extraordinary four-bedroom haven that's about to steal your heart! Nestled in a sought-after Tipton estate, this stunning property isn't just a house – it's a home waiting to write your family's next beautiful chapter.

Prepare to be impressed by the meticulously designed open-plan living space. The spacious lounge invites relaxation and family gatherings, while the stunning kitchen is a culinary enthusiast's paradise. Featuring sleek gloss units, integrated appliances, and generous storage, this kitchen is both functional and aesthetically pleasing. The added bonus of a charming conservatory provides the perfect spot to enjoy your morning coffee or unwind after a long day.

To the first floor, three generously proportioned bedrooms await, offering ample space for family members or versatile living arrangements. The contemporary family bathroom, fully tiled with modern fixtures, adds a touch of luxury to your daily routine.

Ascend to the second floor and discover a magnificent master bedroom complete with a private ensuite shower room - your personal retreat from the world.

The property's landscaped rear garden is a true masterpiece, offering a stunning outdoor space perfect for entertaining or peaceful relaxation. With convenient side access and parking for multiple vehicles, this home ticks every box for modern living.

Don't miss this incredible opportunity to make this remarkable property your new home!

Entrance Hallway

Double glazed entrance door to front, stairs to first floor landing, laminate flooring, ceiling light point and door to the lounge.

Lounge

12' 3" max x 12' 4" max (3.73m max x 3.76m max)
Double glazed bay window to front, under stairs storage cupboard, laminate flooring, ceiling light point and radiator.

Kitchen Diner

8' 10" x 15' 7" (2.69m x 4.75m)
Double glazed French doors to conservatory, fitted with a range of wall and base units with work surfaces over, sink and drainer, oven, gas hob with cooker hood over, integrated appliances including; microwave, fridge freezer, washing machine and dishwasher, two ceiling light points and a radiator.

Conservatory

9' 7" max x 9' 2" max (2.92m max x 2.79m max)
Double glazed French doors to side giving access to the rear garden.

First Floor Landing

Carpeted, ceiling light point, doors to bedrooms 2, 3 and 4 plus the family bathroom, stairs to second floor landing.

Bedroom Two

11' 2" x 9' 4" (3.40m x 2.84m)
Double glazed window to rear, radiator, carpet and ceiling light point.

Bedroom Three

10' 1" x 6' 6" (3.07m x 1.98m)
Double glazed window to front, carpet, radiator and ceiling light point.

Bedroom Four

6' 10" x 8' 9" (2.08m x 2.67m)
Double glazed window to front, radiator, carpet and ceiling light point.

Family Bathroom

Double glazed window to rear, bath with shower over, vanity wash hand basin, WC, ceiling light point, radiator, tiled walls and flooring.

Second Floor Landing

Access to the master bedroom.

Master Bedroom

16' 4" x 9' 8" (4.98m x 2.95m)

Double glazed window to rear, double glazed Velux window to front, laminate flooring, radiator, ceiling light point and door to the en suite.

En Suite

Double glazed window to rear, shower cubicle, wash hand basin, WC, tiled floor and walls.

Outside

Front:

Brick paved patio, pathway to front door and lawn.

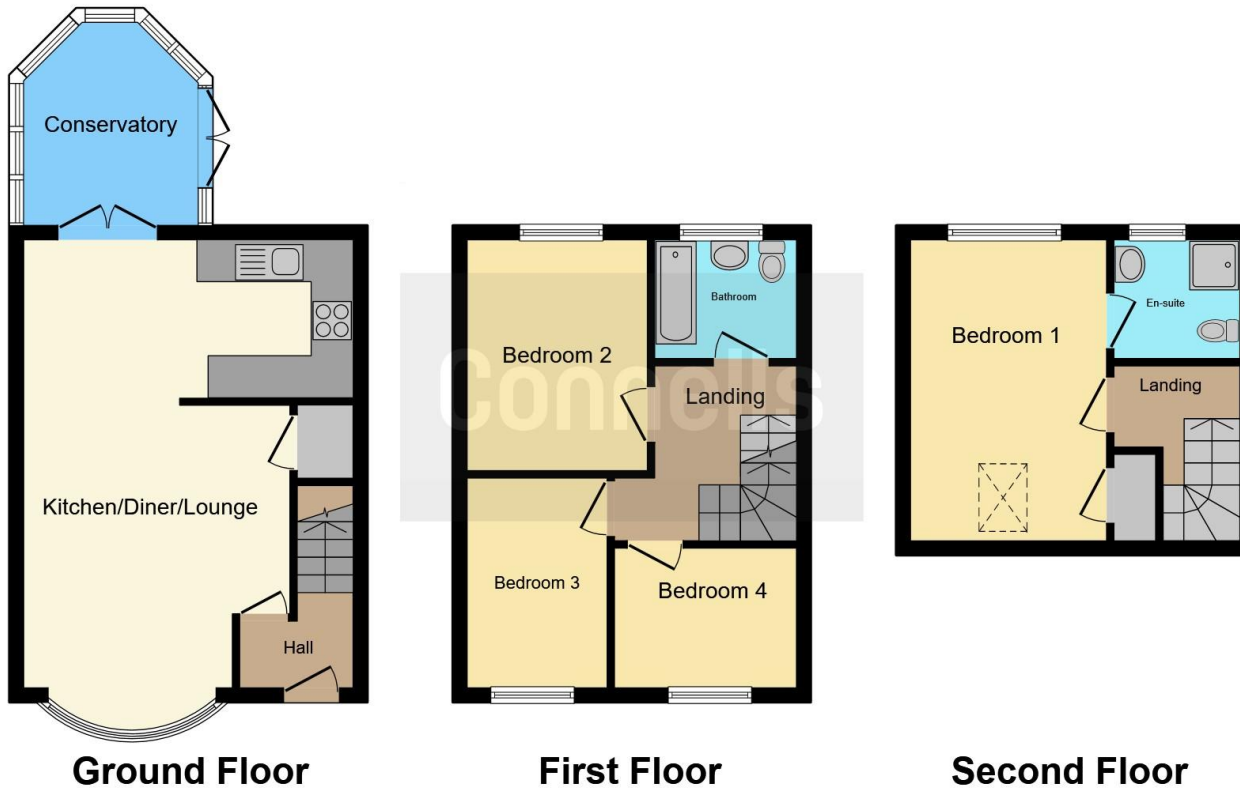
Rear:

Block paved patio, lawn and side access.

Agents Note

This property is in a former mining area, it will be beneficial to conduct a mining search, please speak with your conveyancer.





This floor plan is for illustrative purposes only. It is not drawn to scale. Any measurements, floor areas (including any total floor area), openings and orientation are approximate. No details are guaranteed, they cannot be relied upon for any purpose and they do not form part of any agreement. No liability is taken for any error, omission or misstatement. A party must rely upon its own inspection(s). Powered by www.focalagent.com

To view this property please contact Connells on

T 0121 556 2338
E wednesbury@connells.co.uk

22 Spring Head
 WEDNESBURY WS10 9AD

EPC Rating: D Council Tax
 Band: B

view this property online connells.co.uk/Property/WED311913

Tenure: Freehold



1. MONEY LAUNDERING REGULATIONS Intending purchasers will be asked to produce identification documentation at a later stage and we would ask for your co-operation in order that there will be no delay in agreeing the sale. 2. These particulars do not constitute part or all of an offer or contract. 3. The measurements indicated are supplied for guidance only and as such must be considered incorrect. Potential buyers are advised to recheck measurements before committing to any expense. 4. We have not tested any apparatus, equipment, fixtures, fittings or services and it is in the buyers interest to check the working condition of any appliances.

Connells Residential is registered in England and Wales under company number 1489613, Registered Office is Cumbria House, 16-20 Hockliffe Street, Leighton Buzzard, Bedfordshire, LU7 1GN. VAT Registration Number is 500 2481 05.

See all our properties at www.connells.co.uk | www.rightmove.co.uk | www.zoopla.co.uk

Property Ref: WED311913 - 0004