

Apartment 133, Millroyd Mill Huddersfield Road

Brighouse, HD6 1PR

£695 PCM





Offered for let is this convenient one bedroom apartment situated within the Mill Royd Mill complex that as well as its central town location, has a range of benefits including use of the site gym/pool facilities. The character of the mill is carried through the apartment with exposed timber beams, brickwork, and wrought ironwork.

Available part furnished the home would suit a single professional looking for a low maintenance property in the vibrant town of Brighouse.

Accommodation:

This one bedroom part furnished accommodation is found on the ground floor of the complex and briefly comprises; entrance hall with storage cupboard, main lounge/kitchen with the lounge having exposed brickwork and patio doors to the external areas. The kitchen suite has a range of base, drawer and wall units in cream with gloss finish and incorporating integrated appliances to include electric oven, four plate hob with extractor above, washing machine, and refrigerator.

The double bedroom utilises borrowed light from the living room and has a range of furnishings for a 'turn key' home. The house bathroom has three piece white suite to include low flush WC, sink pedestal, and shower cubicle. The room is half tiled and has a chrome finish heated towel rail.

Location:

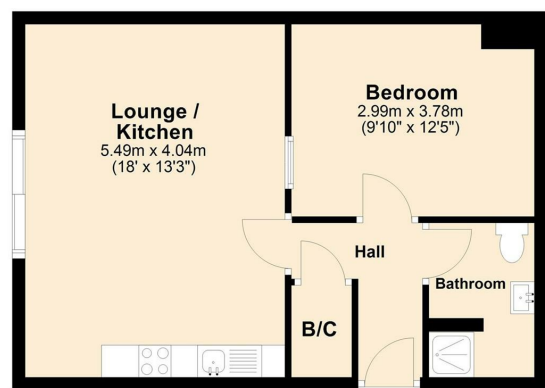
Mill Royd Mill sits in the heart of Brighouse overlooking the River Calder and Brighouse marina basin. Within walking distance of the wealth of amenities, convenience stores, boutique shops, and leisure facilities the property benefits those individuals needing easy access to those offered by Brighouse market town. In addition the railway station sits just across the river and provides direct connections to Leeds, Manchester, and Huddersfield. The apartment therefore offers affordable accommodation in an award winning mill compared to the larger city conurbations, but with good commuter links for those city workers.

Council tax band: A

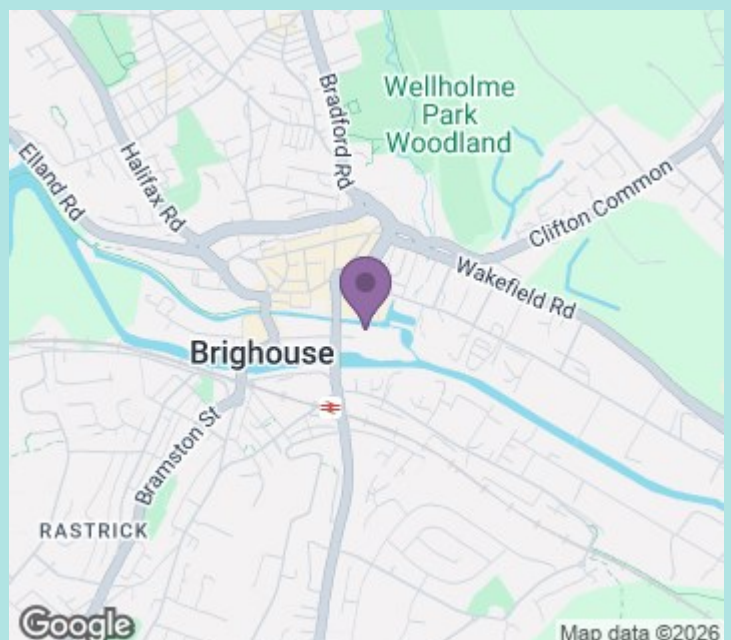
EPC rating: E

Deposit: £801

Ground Floor



Total area: approx. 43.5 sq. metres (468.4 sq. feet)



ws-residential.co.uk

01484 711200



These particulars, whilst believed to be accurate are set out as a general outline only for guidance and do not constitute any part of an offer or contract. Intending purchasers should not rely on them as statements of representation of fact, but must satisfy themselves by inspection or otherwise as to their accuracy. No person in this firm's employment has the authority to make or give any representation or warranty in respect of the property.