



## Telegraph Avenue, SE10 £550,000

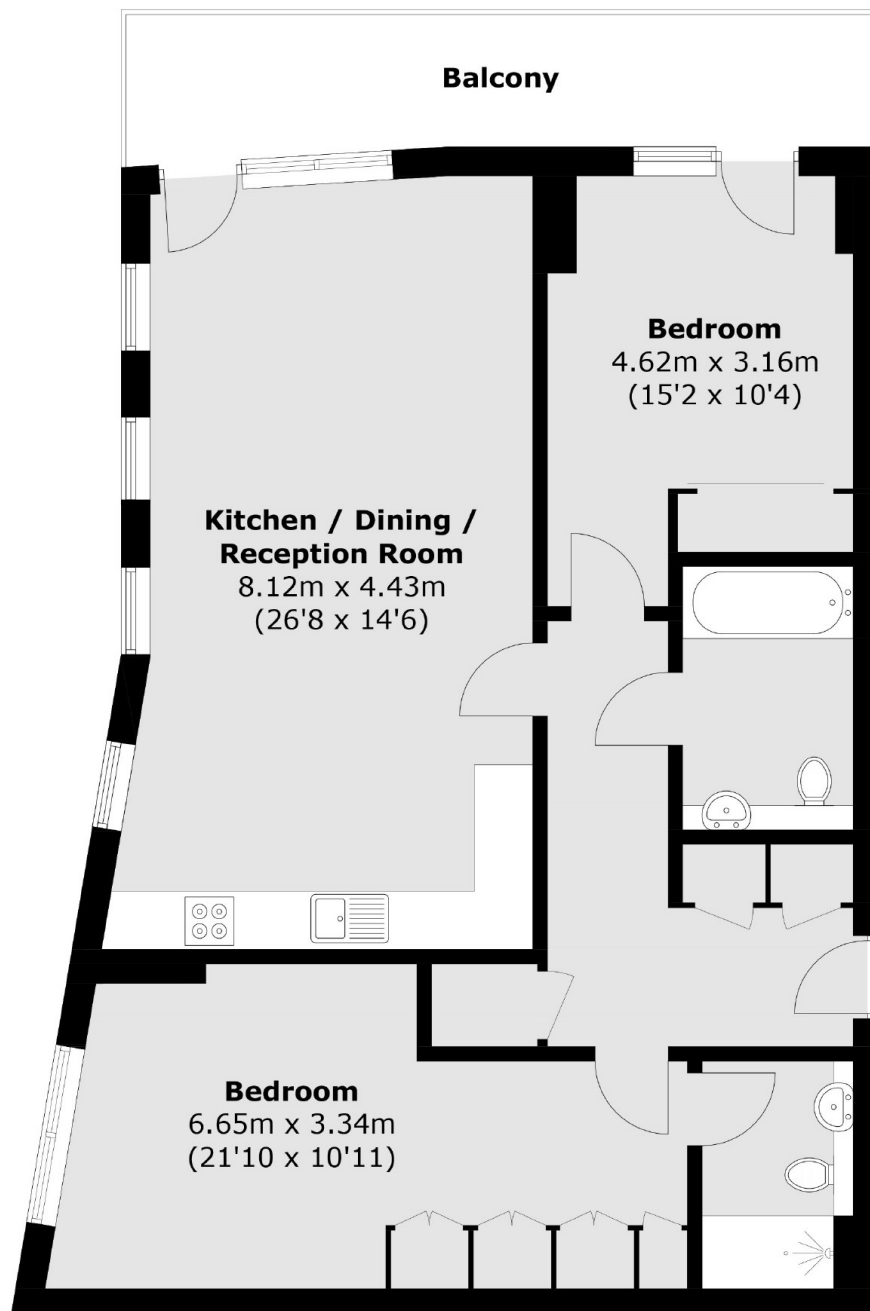
A beautifully presented, light-filled apartment in excellent condition throughout. The property offers two double bedrooms, two bathrooms, and a private balcony with stunning views of the Thames and the London City skyline.

Transport links are excellent with the Jubilee line from North Greenwich station, DLR at Cutty Sark and mainline services from Maze Hill all offering regular services into central London. There are also a wide variety of shops, bars and restaurants in Greenwich Town centre (including the historic market) not forgetting the wide open spaces of Greenwich Park.

### Features

- Amazing River Views
- Modern Apartment
- Sought After Location
- Two Bathrooms
- 24/7 Concierge
- Excellent Condition

Telegraph Avenue,  
London, SE10



Total area (approx.): 86.3 sq. m (928.9 sq. ft)  
Balcony: 10.8 sq. m (116.2 sq. ft)

**Dexters**

Greenwich  
275 Greenwich High Road  
Greenwich  
London  
Sales  
020 8815 2215

Energy Rating: B. We aim to make our particulars both accurate and reliable. However they are not guaranteed; nor do they form part of an offer or contract. If you require clarification on any points then please contact us, especially if you're traveling some distance to view. Please note that appliances and heating systems have not been tested and therefore no warranties can be given as to their good working order.

**RICS** | Regulated  
Estate Agent  
and Letting Agent

[dexters.co.uk](https://www.dexters.co.uk)