



The Conduit, Bletchingley

£900,000

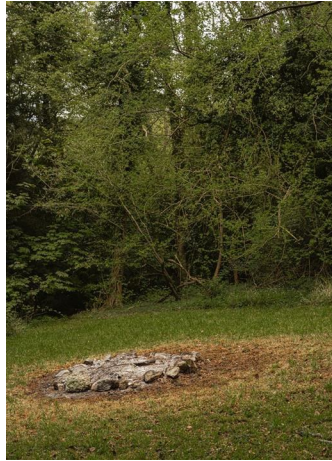




“

Red Gables Lodge is a charming early 1900s detached home, rich in character and history, set within a picturesque position. Offering generous space both inside and out, the property sits within established grounds including gardens and woodland, and enjoys a peaceful, semi-rural setting. While it would benefit from modernisation, it presents a rare opportunity to create a truly special family home in an outstanding and unspoilt location.

”



Tucked away along the quiet and highly regarded Conduit in the historic village of Bletchingley, Red Gables Lodge is a truly special five-bedroom detached home set within approximately 1.65 acres of beautifully varied grounds.

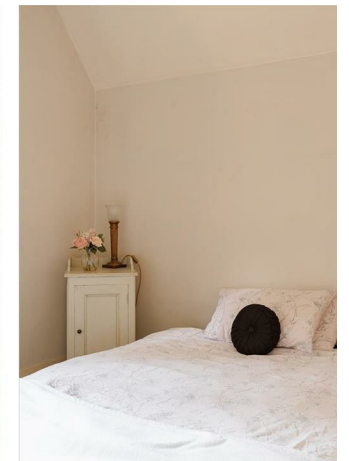
Steeped in history, the property has lived many lives over the years, including serving as a convalescent home and a hospital during the First World War, and today stands as a remarkable and character-filled private residence. Architecturally inspired by the renowned Sir Edwin Lutyens, the house showcases distinctive design features and an abundance of charm, with many original details carefully retained.

Over time, the property has been thoughtfully extended on two occasions, creating a generous and versatile layout that blends character with practical family living.

The accommodation is well balanced, with multiple reception areas offering flexibility for both everyday living and entertaining, while the kitchen and adjoining spaces provide a natural hub of the home. Upstairs, four well-proportioned bedrooms are complemented by views across the surrounding gardens and grounds, further enhancing the sense of space and tranquility.

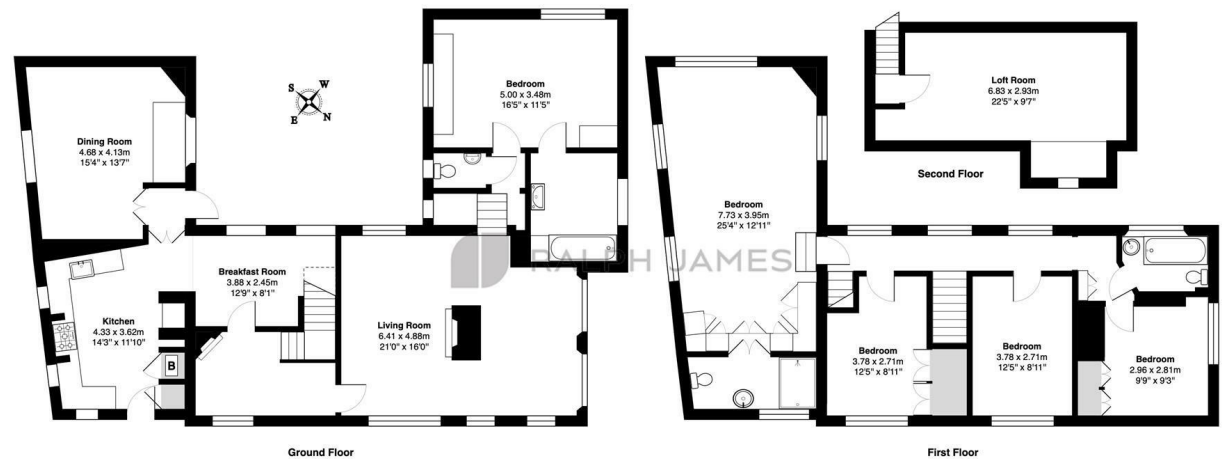
Externally, the setting is a key part of what makes Red Gables Lodge so unique. A welcoming front garden sets the tone on arrival, while to the rear a private courtyard provides an ideal space for outdoor dining and entertaining. Further to this, the grounds open out into an expansive garden that seamlessly blends into private woodland, offering a rare degree of seclusion and a wonderful natural backdrop.

The property is approached via a driveway providing parking for multiple vehicles, and while presented in good decorative order, it offers clear scope for incoming owners to personalise and enhance to their own taste over time. Red Gables Lodge is a home of genuine character and heritage, offering a rare opportunity to acquire a landmark property in a peaceful yet well-connected village setting.



Need to know

- Charming early 1900s detached home with rich local history
- Rare historic property with origins as a WW1 hospital and convalescent home
- Lutyens-style architecture with original period features throughout
- Set on approximately 1.65 acres including private woodland
- Located on a quiet and sought-after road, The Conduit
- Multiple reception rooms ideal for family living and entertaining
- Beautiful rear courtyard garden perfect for outdoor dining
- Large front garden and expansive landscaped grounds
- Driveway parking for multiple vehicles
- Council Tax Band F



Red Gables Court, The Conduit, Betchingley, Redhill
Total Area: 227.0 m² ... 2443 ft²
FOR ILLUSTRATIVE PURPOSES ONLY.

Whilst every attempt has been made to ensure the accuracy of the floor plan shown, all measurements, positioning, fixtures, features, fittings and any other data shown are an approximate interpretation for illustrative purposes only and are not to scale.
No responsibility is taken for any error, omission, mis-statement or use of data shown.

The above statement applies to both 'Still Moving London LTD' and the Company or individual displaying this floor plan.

Unauthorised reproduction prohibited.

At: Still Moving London LTD (www.stillmoving.london)

RALPH JAMES

Interested?

redhill@ralphjames.co.uk
01737 765 555

ralphjames.co.uk