



VERNON ROAD, 45 , LEICESTER, LEICESTERSHIRE LE2 8GE

£190,000



PROPERTY REFERENCE CODE: RS0086

VERNON ROAD, 45 , LEICESTER, LEICESTERSHIRE LE2 8GE

Charming 2-bed mid-terrace home ideal for first-time buyers or investors! Features entrance hall, ground floor bedroom, two receptions, fitted kitchen, small garden, two bedrooms & modern bathroom. Call KCR Real Estate now to arrange your viewing!

- FITTED KITCHEN
- ENTRANCE HALL
- GROUND FLOOR BEDROOM
- SPACIOUS LOUNGE
- SMALL GARDEN
- BATHROOM UPSTAIRS
- TWO RECEPTION

This property consists of:

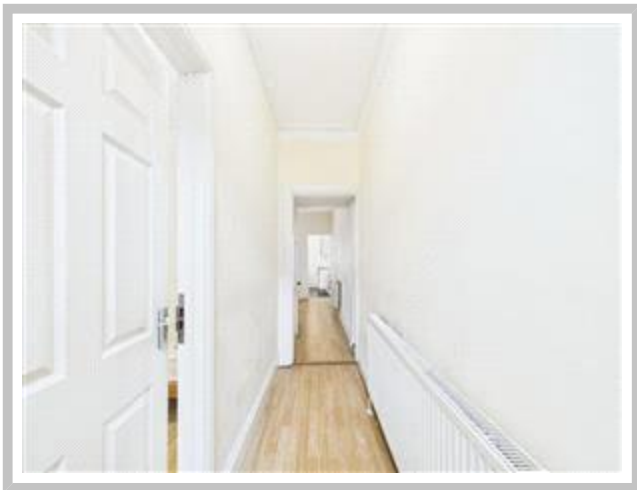
KCR Real Estate are delighted to present this charming three-bedroom mid-terrace home, perfect for first-time buyers and investors alike!

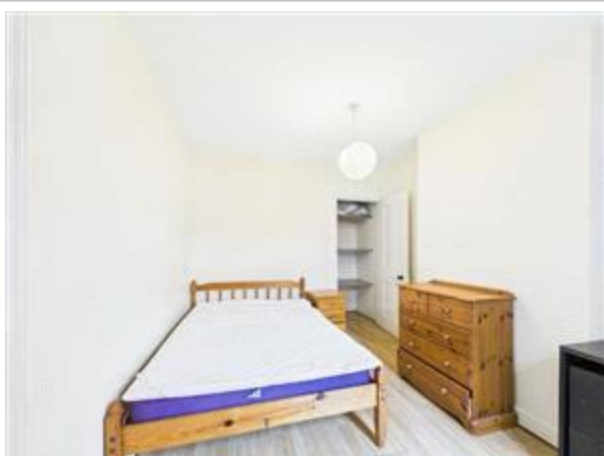
The property welcomes you through an inviting entrance hall, leading to a ground floor bedroom and two spacious reception rooms, offering flexible living space for family and guests. The fitted kitchen provides ample storage and access to a small, low-maintenance garden — ideal for relaxing or entertaining.

Upstairs, you'll find two well-proportioned bedrooms and a modern family bathroom.

Don't miss out on this fantastic opportunity — call us now to arrange your viewing!

Council Tax Band: A (Leicester Council)
Tenure: Freehold







TENURE: We have been advised by the Vendors the property is Freehold.

It is advised to have this information verified by your legal representative; we take no legal responsibility given by a vendor/seller of its accuracy. It was not possible to verify and obtain this information given by means of any current documentation.