



Caldicot Road, Caldicot

3 Bedrooms
1 Bathrooms
3 Receptions

£310,000

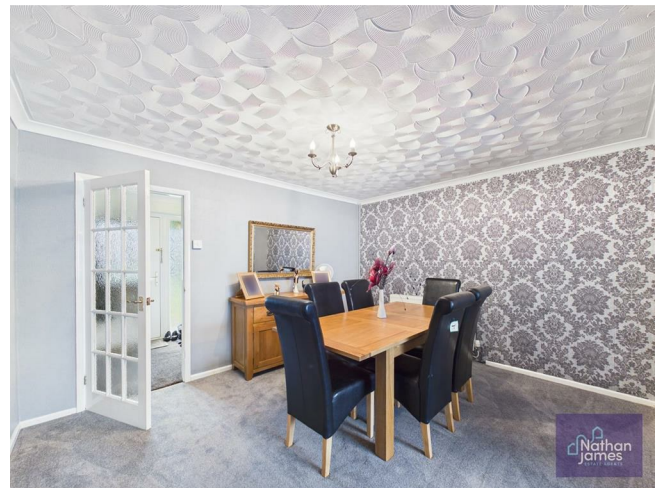


Description

Welcome to Rogiet, this generous three-bedroom house on Caldicot Road presents an excellent opportunity for families and commuters alike. The property boasts a kitchen and three spacious reception rooms, providing ample space for your growing family and a convenient downstairs W/C enhances the practicality of the home.

The three well-proportioned bedrooms offer comfortable living spaces, perfect for rest and rejuvenation. The property is further complemented by generous front and back gardens, ideal for outdoor activities with an abundance of parking available, this home caters to the needs of modern family living.

One of the standout features of this property is its fantastic location. It provides easy access to Severn Tunnel Junction and the M4, making it an ideal choice for those who commute for work or leisure. The combination of space, convenience, and a welcoming community makes this home a remarkable find in the heart of Rogiet. Whether you are looking to settle down or invest, this property is sure to meet your needs.



Lounge
11'1 x 14'6

Dining Room
11'0 x 13'1

Kitchen
14'1 x 9'4

Snug
12'0 x 10'3

W/C
2'6 x 4'3

Bedroom 1
10'1 x 10'10

Bedroom 2
10'8 x 9'10

Bedroom 3
7'0 x 9'10

Bathroom
8'2 x 5'5



Council Tax Band D



Floor 0



Floor 1

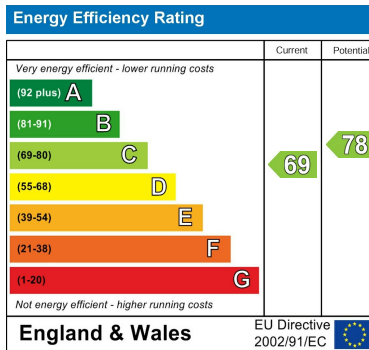


Approximate total area⁽¹⁾
1076 ft²

(1) Excluding balconies and terraces

Calculations reference the RICS IPMS 3C standard. Measurements are approximate and not to scale. This floor plan is intended for illustration only.

GIRAFFE360



8 Newport Road
Caldicot
Monmouthshire
NP26 4HX
01291 421600

nj@nathanjamesestateagents.co.uk
nathanjamesestateagents.com