



**Guide Price**  
**£530,000**

**Freehold**

3x  2x  2x 

**Stuart Evans Close,  
Welling, Kent, DA16**

**OVER 60?**

Secure this property  
for up to **59% less!**

*Wards*  
Helping you move forwards



## Main features

- **Extended**
- **Garage and off road parking**
- **Family Bathroom and downstairs toilet**
- **Main bedroom featuring a dressing area and private en-suite**
- **Generous lounge providing a bright and welcoming living space**

## Accommodation

### GROUND FLOOR

Entrance Porch

Lounge/Dining Room: 25'3 x 11'9 (7.70m x 3.58m)

Kitchen: (L-shaped) 17'9 x 12'1 (5.41m x 3.69m)  
plus 16'3 x 5'1 (4.96m x 1.55m)

Study: 16'9 x 10'3 (5.11m x 3.13m)

Toilet

### FIRST FLOOR

Landing

Bedroom 1: 15'3 x 9'5 (4.65m x 2.87m)

En-Suite Shower

Dressing Room: 8'5 x 6'9 (2.57m x 2.06m)

Bedroom 2: 14'5 x 10'3 (4.40m x 3.13m)

Bedroom 3: 11'9 x 10'5 (3.58m x 3.18m)

Bathroom

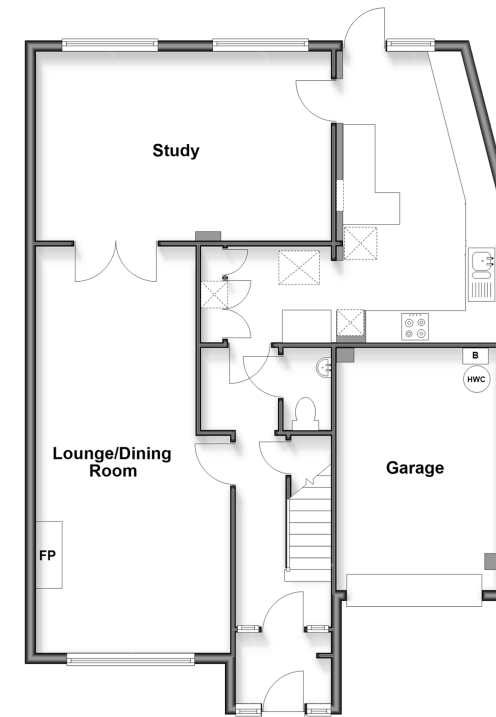
### OUTSIDE

Driveway

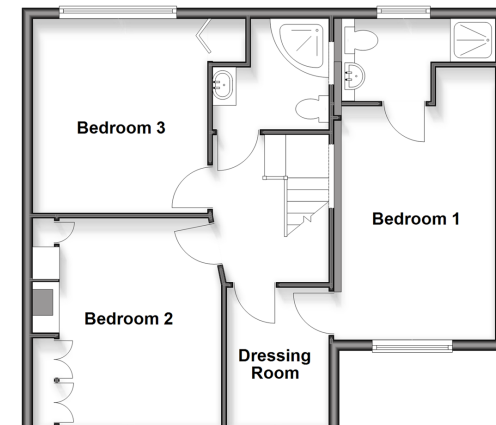
Rear Garden

Garage

**Ground Floor**  
Approx. 92.1 sq. metres (991.2 sq. feet)



**First Floor**  
Approx. 61.0 sq. metres (656.2 sq. feet)



**Call Welling - 020 8301 6679 ■ [wardsof Kent.co.uk](http://wardsof Kent.co.uk)**

■ Through a Homewise Home For Life Plan people aged 60+ can secure this property for up to 59% less, by purchasing a Lifetime Lease



15009246/20260408/NB/NB