

## Page Street, SW1P

£500,000

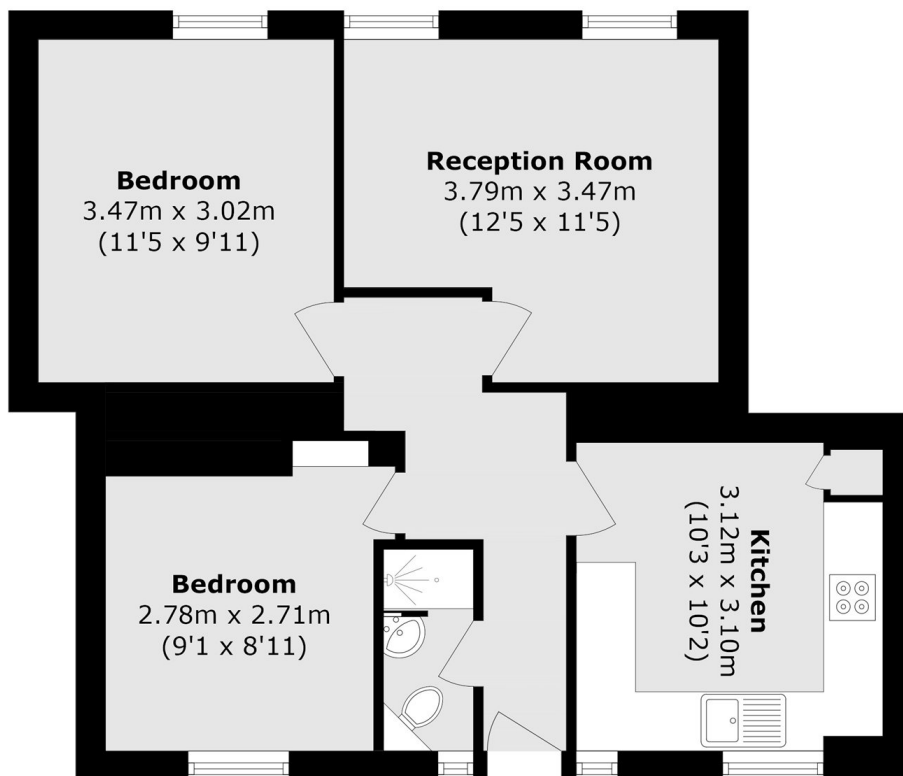
This property is excellently located in the heart of Westminster. Situated on the fifth floor, the property comprises of two double bedrooms, one bathroom, a separate eat-in kitchen and living space. The property benefits from lift access and plenty of natural light.

Rogers House is conveniently close to all the amenities of Victoria Street. Transportation is provided via Victoria (Victoria, Circle, District and Mainline Services) Pimlico (Victoria) and St James's Park (Circle and District).

### Features

- Two Bedrooms
- Separate Kitchen
- Good Condition
- Fifth Floor
- Lift
- Westminster

# Page Street, London, SW1P



## Fifth Floor

Total area (approx.): 52.1 sq. m (560.8 sq. ft)