



6 Grundy Crescent, Kennington OX1 5PS

6 Grundy Crescent

Substantially extended and superbly presented four bedroom semi-detached family home well situated within the highly sought after village of Kennington, complemented by large and well maintained gardens and close to nearby amenities including the village nursery and primary school, doctors surgery, village shop and pub.

Grundy Crescent is situated in a very pleasant cul-de-sac location within the heart of this very popular village and offers easy access to the village's amenities which include schools, shops, church and public house. There is an excellent bus service from both Oxford city (circa. 2 miles) and the nearby town of Abingdon (circa. 5 miles) and the A34 offers many road links both north and south.

Bedrooms: 4

Bathrooms: 2

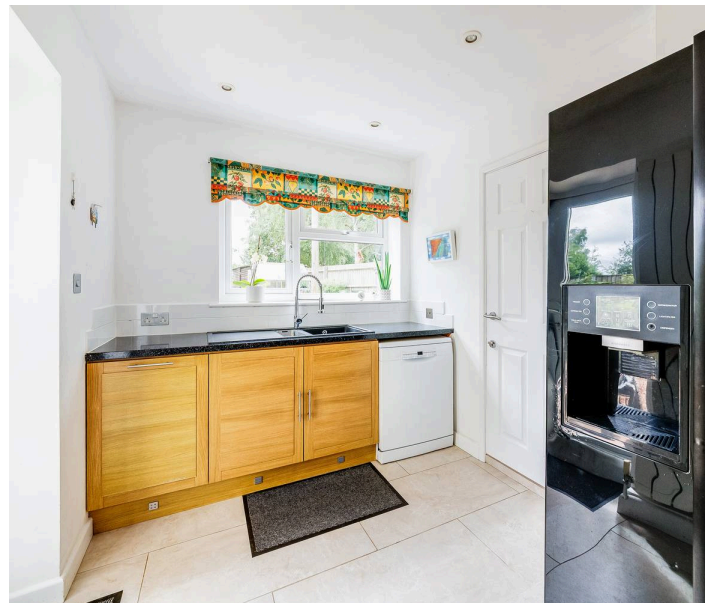
Reception Rooms: 1

Council Tax Band: D

Tenure: Freehold

EPC: C





Key Features

- Inviting entrance hall leading to delightful front living room with attractive feature fireplace with fitted gas fire
- Spacious dining room featuring real solid oak wood flooring and double glazed French doors to rear gardens
- Extended and well equipped kitchen/breakfast room offering an excellent selection of floor and wall units
- Stunning and very large first floor double aspect principal bedroom including real solid oak wood flooring, two sets of double glazed French doors leading to Juliet balconies and stylish en suite
- Three further spacious bedrooms complemented by family bathroom with white suite
- Mains gas radiator central heating, double glazed windows and the front gardens provide hard standing parking facilities for several vehicles leading to integral garage
- Large attractive southerly facing rear gardens offering large patio leading onto extensive lawn- the whole enclosed by fencing









BRITISH
PROPERTY
AWARDS
2024

GOLD WINNER

ESTATE AGENT
IN ABINGDON



Introducing the Hodsons team...
...trust in our experience!

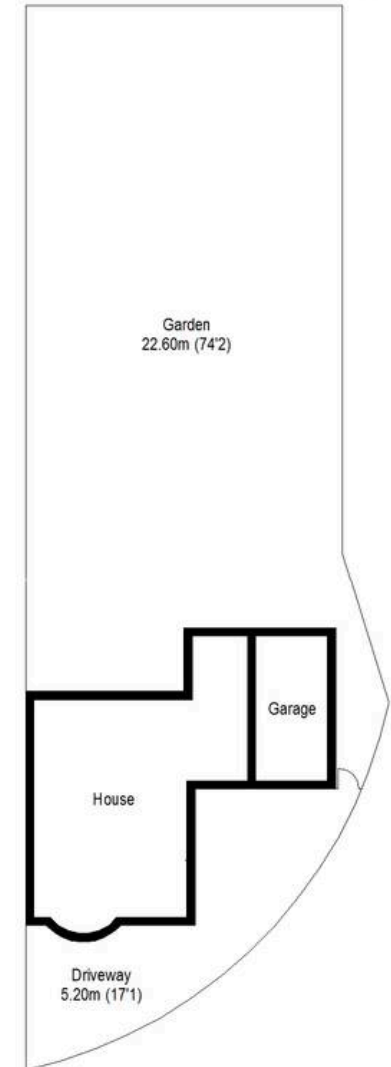
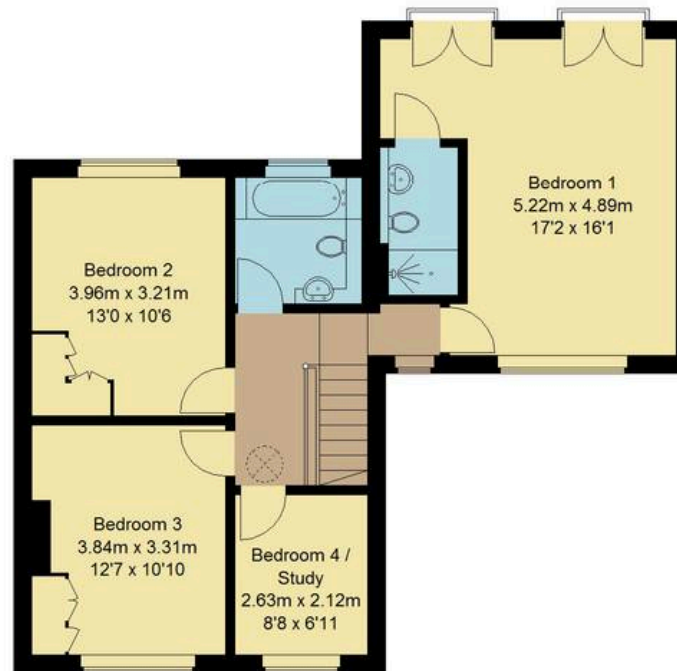
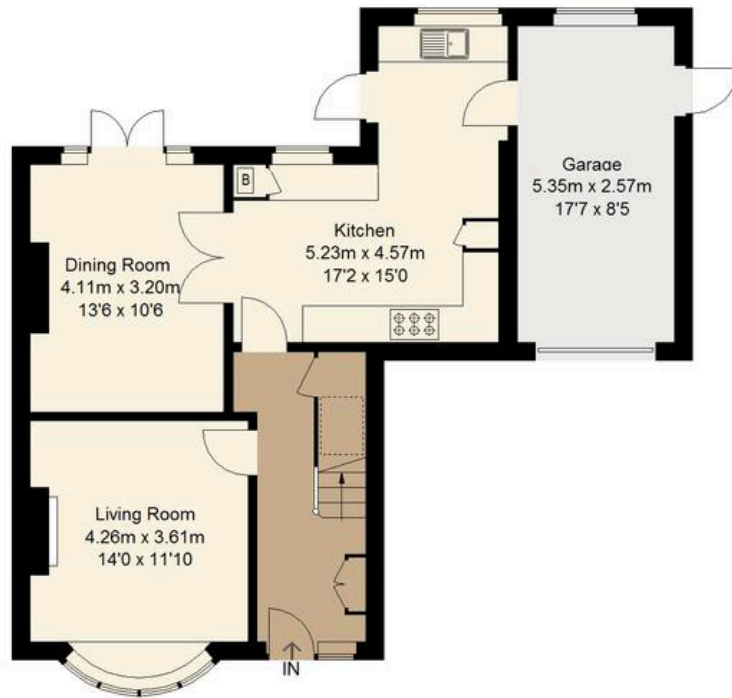
Hodsons
...your move, our passion



Grundy Crescent, OX1
 Approximate Gross Internal Area = 142.9 sq m / 1538 sq ft
 (Including Garage)



= Reduced headroom below 1.5 m / 5'0"



Ground Floor

First Floor

Site Plan

Floor plan produced in accordance with RICS Property Measurement Standards.
 © Mortimer Photography. Produced for Hodsons.
 Unauthorised reproduction prohibited. (ID904755)

Hodsons
 ..your move. our passion
Sales | Lettings

5 Ock Street, Abingdon,
 Oxfordshire, OX14 5AL
T: 01235 553686
E: abingdon@hodsons.co.uk
www.hodsons.co.uk