

MUNDAY'S

Melbourne Grove, East Dulwich

£415,000



Excellent penthouse pad of 501 square feet on a cute street off Grove Vale and near Lordship Lane and Goose Green, just two minutes from East Dulwich Station (Fare Zone 2).

The bright flat sits on the third floor: a smart addition and crown to this attractive Victorian corner building. Enjoy a great layout (no wasted space here) with an open-plan main room incorporating seating, dining and kitchen areas, and a double bedroom leading to the property's full bathroom. Windows are double-glazed. Walls are fresh and white.

Munday's Estate Agents Ltd.
2 Mary Boast Walk
London SE5 8SP
020 3318 8900

www.mundays.com

MUNDAY'S

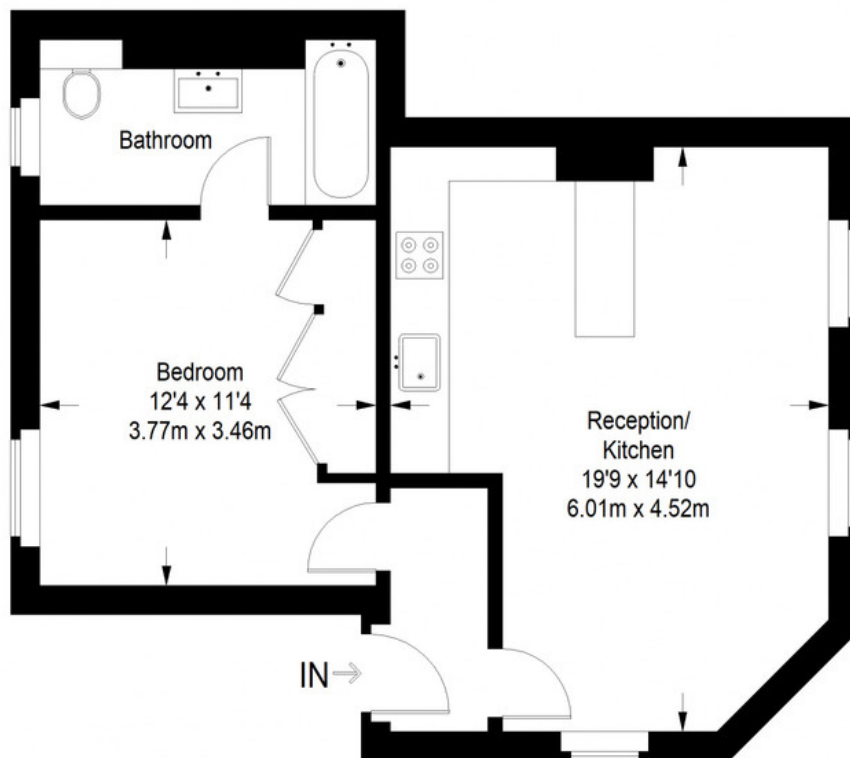


Munday's Estate Agents Ltd.
2 Mary Boast Walk
London SE5 8SP
020 3318 8900

www.mundays.com

MUNDAY'S

Melbourne Grove



Third Level = 501 sq ft

Approximate Gross Internal Area
THIRD LEVEL = 501 sq ft / 46.54 sq m



This plan is for layout guidance only. Not drawn to scale unless stated. Windows and door openings are approximate. Whilst every care is taken in the preparation of this plan, please check all dimensions, shapes and compass bearings before making any decisions reliant upon them. (ID357409)

Munday's Estate Agents Ltd.
2 Mary Boast Walk
London SE5 8SP
020 3318 8900

www.mundays.com