

HUNTERS[®]

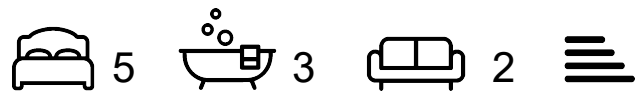
HERE TO GET *you* THERE



Gleneagles

Tamworth, B77 4NS

Asking Price £550,000



Council Tax: G



2 Gleneagles

Tamworth, B77 4NS

Asking Price £550,000



Frontage

Block paved driveway with parking for multiple vehicles and lawn area.

Lounge

19'4 x 13'1 (5.89m x 3.99m)

Carpeted flooring, double doors to garden, double glazed bay window to front, ceiling light, radiator and power points.

Kitchen/Dining Room

24'1 x 13'8 (7.34m x 4.17m)

Ceramic tiled flooring, double glazed bay window to rear, radiator, power points, breakfast island, wall and base units, built in oven and hob, integrated dishwasher, sink and drainer and downlights.

Utility

11'4 x 5'7 (3.45m x 1.70m)

Ceramic tiled flooring, plumbing for washing machine, radiator, door to garden, stainless steel sink and drainer, wall and base units, power points and ceiling light.

WC

Wood effect laminate flooring, low flush WC, sink, heated towel rail and ceiling light.

Garage Conversion (Ground floor bedroom)

15'5 x 8'3 (4.70m x 2.51m)

Carpeted flooring, double glazed window to front, power points, ceiling light and radiator.

En-Suite

Ceramic tiled flooring, walk in shower, sink, low flush WC, part tiled walls, ceiling light and extractor fan.

Garage

Up and over door, power points and lighting.

Bedroom One

19'10 x 15'9 (6.05m x 4.80m)

Carpeted flooring, double glazed window to side and front, built in wardrobes, ceiling light, radiator and power points.

En-Suite

Ceramic tiled flooring with under floor heating, walk in shower, bath, low flush WC, his and hers sink and vanity unit, built in cupboards, double glazed window to rear, heated towel rail and ceiling light.

Bedroom Two

13'5 x 10'6 (4.09m x 3.20m)

Carpeted flooring, double glazed window to rear, built in wardrobes, radiator, ceiling light and power points.

En-Suite

Under floor heating, double glazed window to rear, heated towel rail, sink, low flush WC, vanity unit, walk in shower and part tiled walls.

Bedroom Three

11'11 x 10'6 (3.63m x 3.20m)

Double glazed window to rear, ceiling light, radiator, power points and carpeted flooring.

Bedroom Four

13 x 8'6 (3.96m x 2.59m)

Double glazed window to front, ceiling light, radiator, power points and carpeted flooring.

Bedroom Five

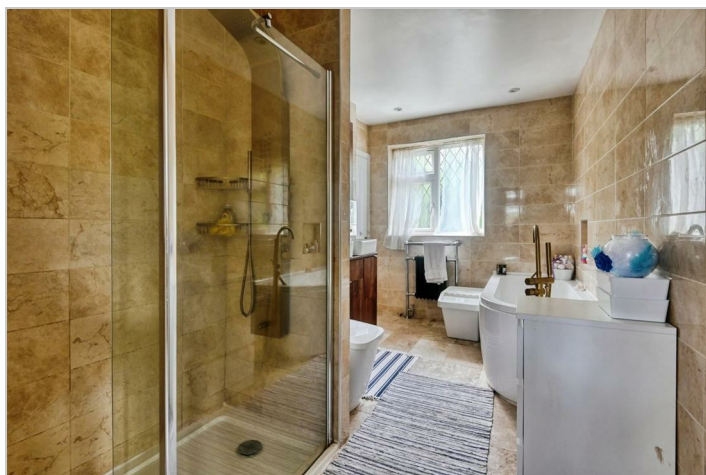
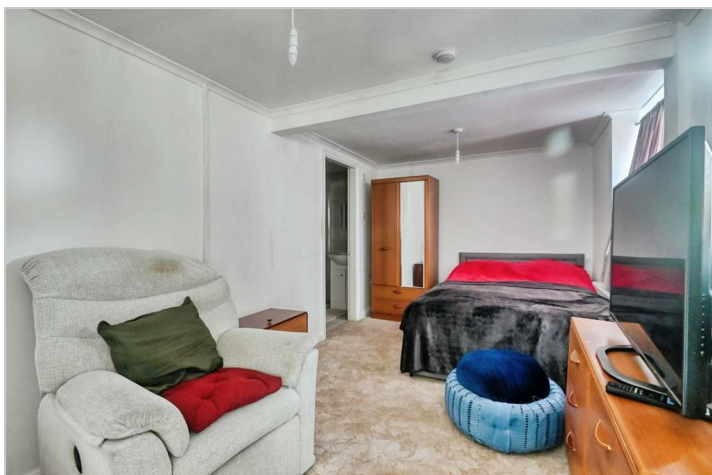
10'6 x 9'6 (3.20m x 2.90m)

Double glazed window to rear, ceiling light, radiator, power points and carpeted flooring.

Garden

Tel: 01827 66277

Paved patio areas, wooden outbuilding which has been made habitable and currently used as an Air BNB.



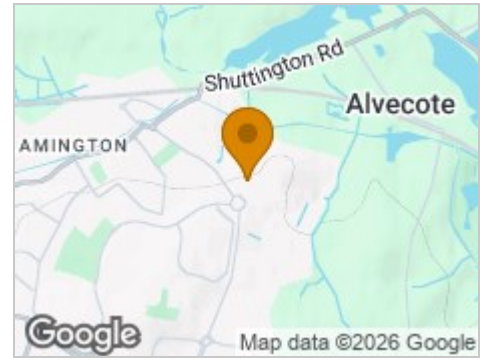
Road Map



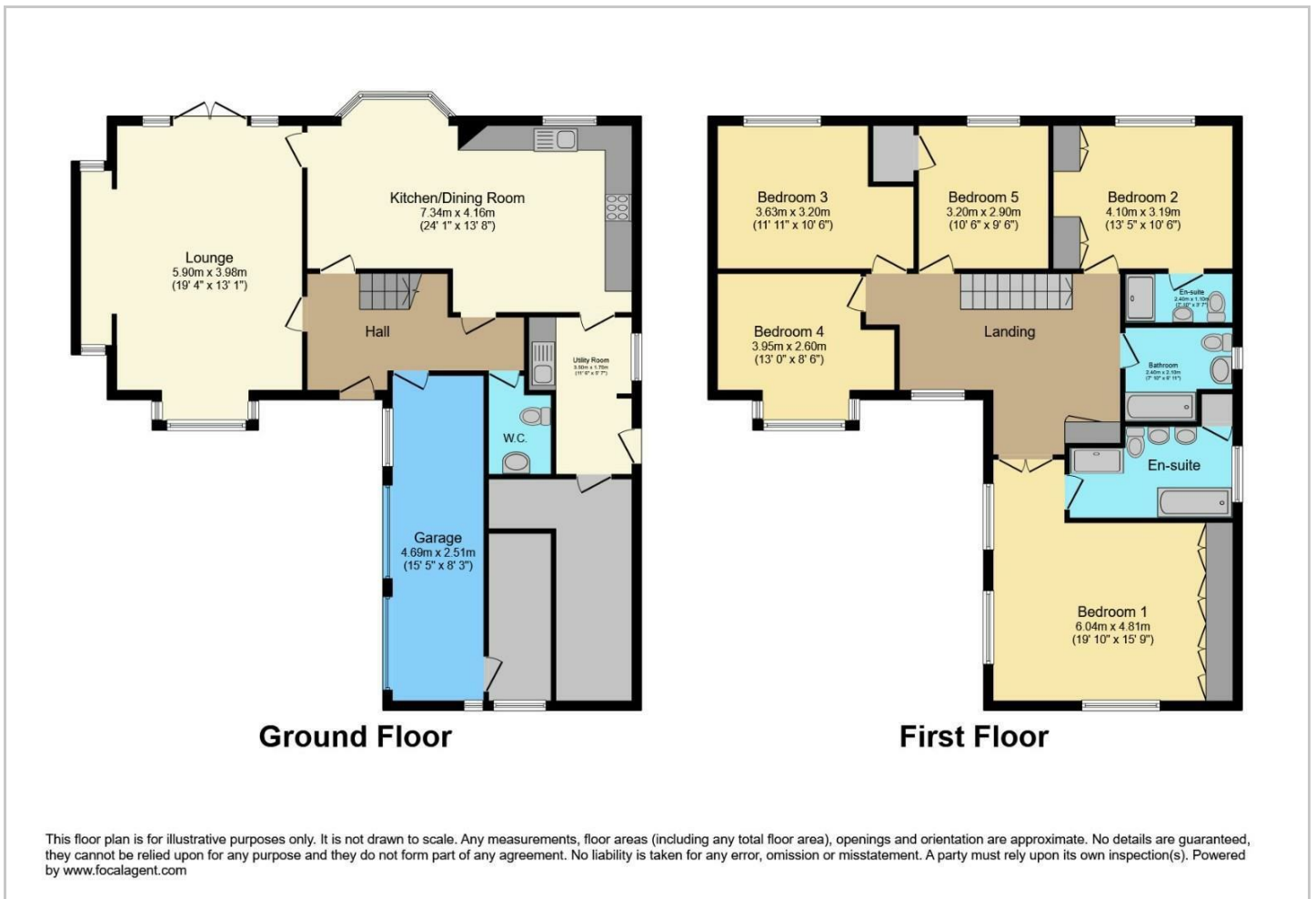
Hybrid Map



Terrain Map



Floor Plan



Viewing

Please contact our Hunters Tamworth Office on 01827 66277 if you wish to arrange a viewing appointment for this property or require further information.

Energy Efficiency Graph



These particulars are intended to give a fair and reliable description of the property but no responsibility for any inaccuracy or error can be accepted and do not constitute an offer or contract. We have not tested any services or appliances (including central heating if fitted) referred to in these particulars and the purchasers are advised to satisfy themselves as to the working order and condition. If a property is unoccupied at any time there may be reconnection charges for any switched off/disconnected or drained services or appliances - All measurements are approximate. **THINKING OF SELLING?** If you are thinking of selling your home or just curious to discover the value of your property, Hunters would be pleased to provide free, no obligation sales and marketing advice. Even if your home is outside the area covered by our local offices we can arrange a Market Appraisal through our national network of Hunters estate agents.