



PER MONTH

**£2,150 Per Month**

**Empire Square South**

South East London, SE1 4NF

Located within a popular modern development situated just a few moments from both Borough and London Bridge Stations is this large 1 bedroom apartment.

The property features a large reception room with modern open planed kitchen with integrated appliances to reception room, contemporary bathroom and good size double bedroom.

Empire Square boasts a much sought-after location moments from Borough Underground Station and the fantastic Borough Market. London Bridge is also just a short walk.

Available from the end of January

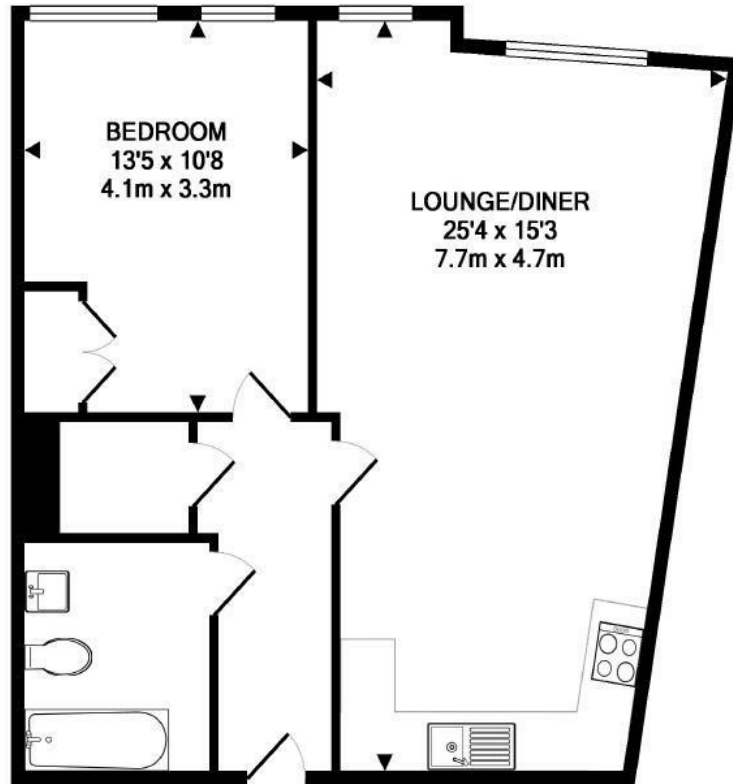
5 weeks deposit: £2480

Council tax: Band D









TOTAL APPROX. FLOOR AREA 596 SQ.FT. (55.3 SQ.M.)

Whilst every attempt has been made to ensure the accuracy of the floor plan contained here, measurements of doors, windows, rooms and any other items are approximate and no responsibility is taken for any error, omission, or mis-statement. This plan is for illustrative purposes only and should be used as such by any prospective purchaser. The services, systems and appliances shown have not been tested and no guarantee as to their operability or efficiency can be given  
Made with Metropix ©2012



Energy Efficiency Rating		
	Current	Potential
Very energy efficient - lower running costs		
(92 plus) <b>A</b>		
(81-91) <b>B</b>	85	86
(69-80) <b>C</b>		
(55-68) <b>D</b>		
(39-54) <b>E</b>		
(21-38) <b>F</b>		
(1-20) <b>G</b>		
Not energy efficient - higher running costs		
<b>England &amp; Wales</b>	EU Directive 2002/91/EC	

Agents Note: Whilst every care has been taken to prepare these particulars, they are for guidance purposes only. All measurements are approximate and are for general guidance purposes only and whilst every care has been taken to ensure their accuracy, they should not be relied upon and potential buyers/tenants are advised to recheck the measurements

**OFFICE ADDRESS**  
88 Cheshire Street  
London  
E2 6EH

**OFFICE DETAILS**  
0207 739 6969  
info@peachproperties.com  
www.peachproperties.com