

A two-story brick house with a red tiled roof. The house features several dormer windows on the upper floor and large bay windows on the ground floor. A large, well-maintained green lawn is in the foreground. The sky is blue with some light clouds.

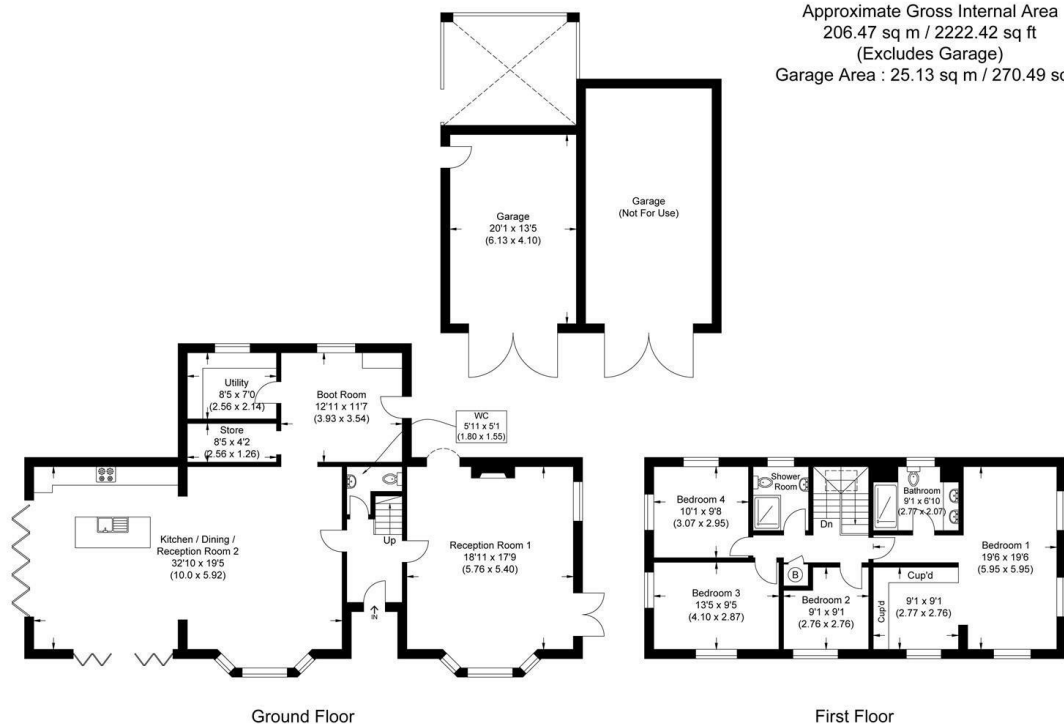
Howard Morley & Sons

PER MONTH

£5,250 Per Month

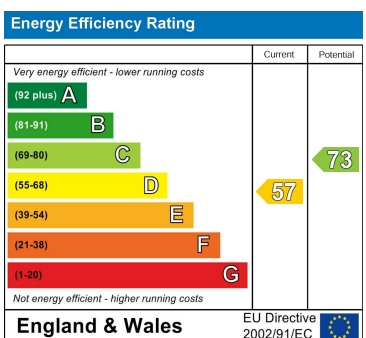
High Street Green

Chiddingfold, GU8 4YB



Approximate Gross Internal Area
206.47 sq m / 2222.42 sq ft
(Excludes Garage)
Garage Area : 25.13 sq m / 270.49 sq ft

Illustration for identification purposes only, measurements are approximate, not to scale.



Agents Note: Whilst every care has been taken to prepare these particulars, they are for guidance purposes only. All measurements are approximate and are for general guidance purposes only and whilst every care has been taken to ensure their accuracy, they should not be relied upon and potential buyers/tenants are advised to recheck the measurements