

OVER 60?

Secure this property
for up to **59% less!**



Guide Price

£500,000

Freehold

3x  2x  3x 

Horseshoes Lane, Langley, Maidstone,
Kent, ME17

Wards

Helping you move forwards



Main features

- **Superb, landscaped rear garden with plenty of outside space**
- **Incredible size driveway, for multiple vehicles, with large garage too**
- **Expansive accommodation with further potential to extend, subject to usual planning consents**
- **Walking distance to local doctors' surgery**
- **Short drive to M20 motorway and Maidstone Town Centre**

Accommodation

GROUND FLOOR

Entrance Hall

Lounge: 14'9 x 10'11 (4.50m x 3.33m)

Kitchen/Breakfast Room: 9'2 x 7'6 (2.80m x 2.29m) plus 9'0 x 7'10 (2.75m x 2.39m)

Dining Area: (L-shaped) 10'3 x 9'3 (3.13m x 2.82m) plus 6'8 x 1'7 (2.03m x 0.48m)

Sitting Area: 13'6 x 7'11 (4.12m x 2.41m)

Bedroom 1: 12'10 x 12'1 (3.91m x 3.69m)

En-suite Shower Room: (L-shaped) 9'1 x 5'3 (2.77m x 1.60m) plus 3'0 x 2'8 (0.92m x 0.81m)

Bedroom 2: (L-shaped) 10'5 x 10'0 (3.18m x 3.05m) plus 1'11 x 7'8 (0.58m x 2.34m)

Bedroom 3/Study: 12'10 x 8'10 (3.91m x 2.69m)

Bathroom: 7'9 x 4'10 (2.36m x 1.47m)

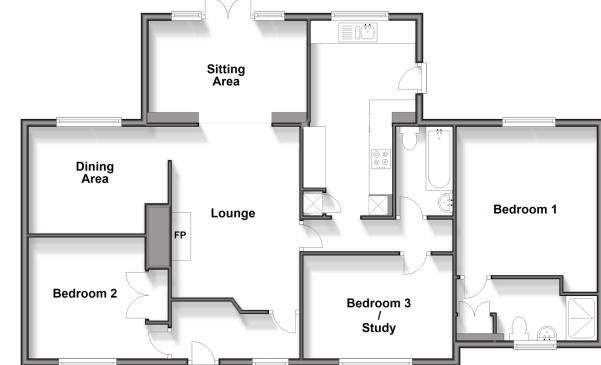
OUTSIDE

Rear Garden

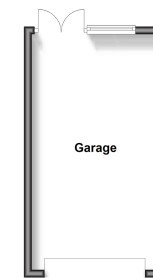
Garage: 21'2 x 10'10 (6.46m x 3.30m)

Driveway

Ground Floor
Approx. 108.4 sq. metres (1108.4 sq. feet)



Outbuilding
Approx. 20.4 sq. metres (219.5 sq. feet)



Call Bearsted - 01622 730955 ■ wardsofkent.co.uk

■ Through a Homewise Home For Life Plan people aged 60+ can secure this property for up to 59% less, by purchasing a Lifetime Lease



12328645/20260501/BM/DF