



Bromley Road, SE6

£1,600 Per calendar month

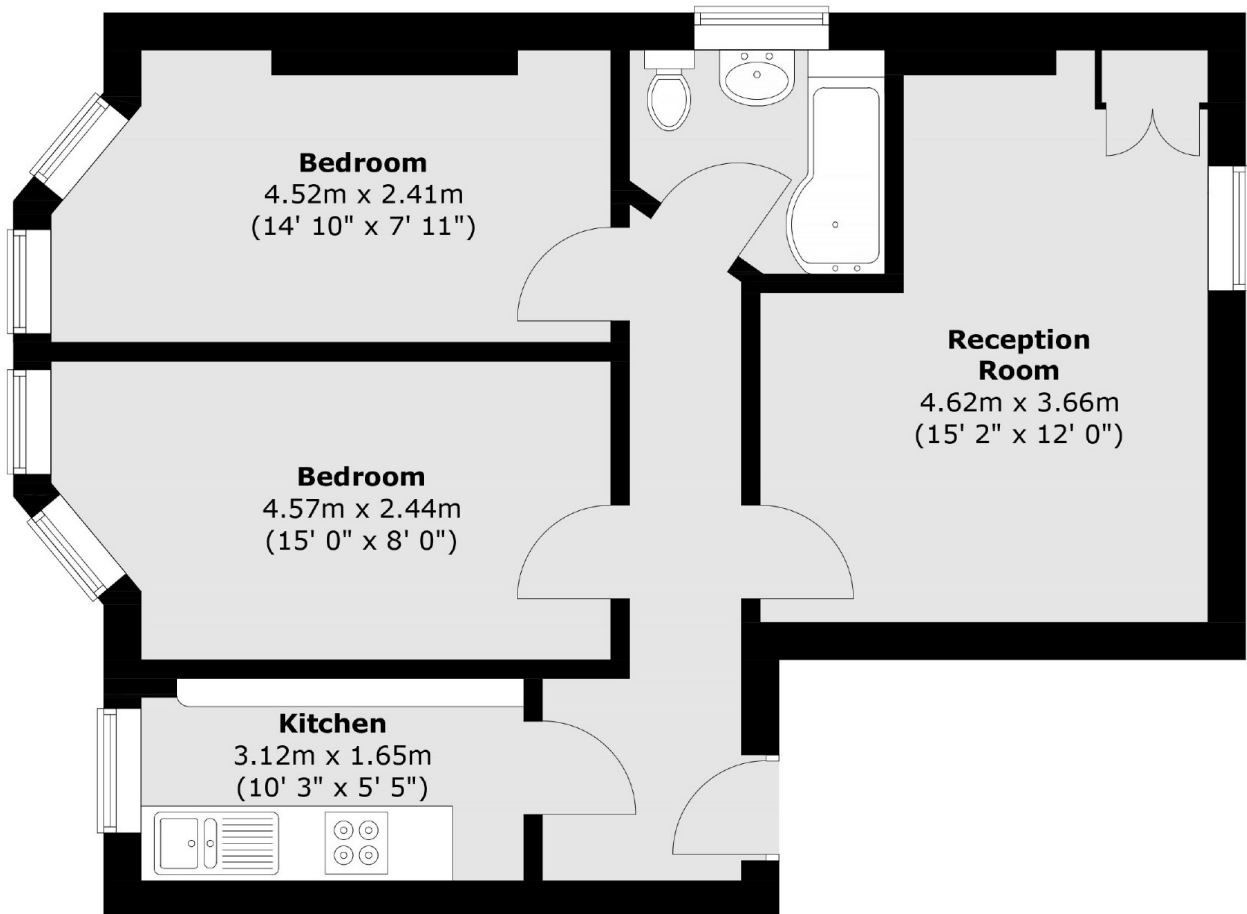
A well presented period conversion offering two double bedrooms, large lounge, kitchen and bathroom situated perfectly for transport links and local amenities in Catford.

This property is ideally located with plenty of local amenities nearby such as Catford High street offering an array of shops, buses and great transport links such as Catford & Catford Bridge railway stations only a short walk away both offering quick and frequent services into London.

Features

- First Floor Flat
- Two Double Bedrooms
- Modern Bathroom
- Separate Kitchen
- Close To Amenities
- Close To Station

Bromley Road,
London, SE6



Total area (approx.) : 53.5 sq. m (576 sq. ft)