



Green Lane, Romiley. SK6 3JG

Superbly presented, modern two bedroom apartment, located in this sought after area, in Romiley Village . Extremely spacious and presented to exacting standards the apartment has been completely re-furbished to provide a 'ready to move into' home with quality fixtures and fittings throughout.

Featuring: Communal entrance and stairs to the first floor landing, large living / fitted kitchen / dining area, with certain integral appliances, modern bathroom and two double bedrooms. Gas central heating is installed along with double glazing and the apartment features contemporary styled decoration and floor coverings.

Asking Price of £190,000



LIVING ROOM / KITCHEN / DINING



MASTER BEDROOM

10' 6" x 8' 11" (3.20m x 2.72m)



BEDROOM TWO

9' 6" x 9' 2" (2.89m x 2.79m)



LUXURY BATHROOM

10' 7" x 5' 5" (3.22m x 1.65m)



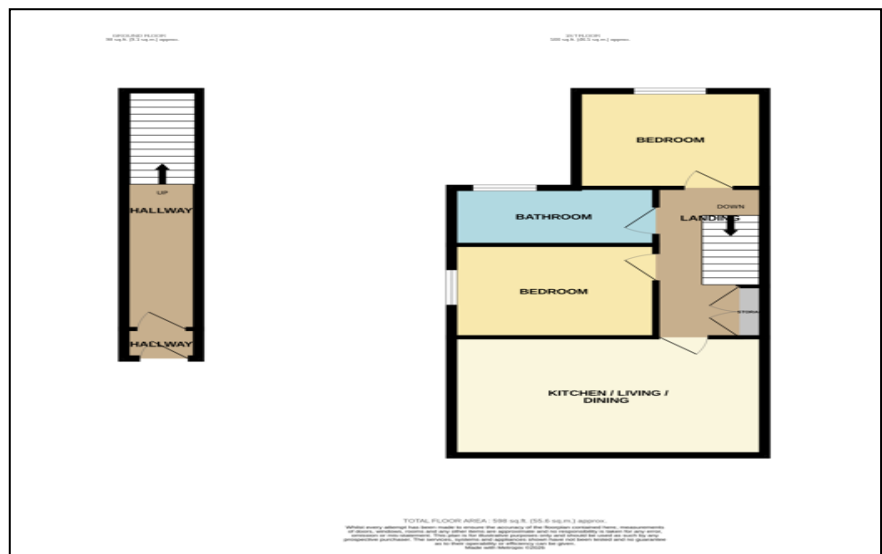
PRIVATE ENTRANCE HALL



VIEWING ARRANGEMENTS

Appointment is strictly by appointment with Thomas Lardner Romiley Office - telephone number 0161 494 5136.

EPC Rating - TBC
Tenure - Freehold
Council Tax band A



Thomas Lardner Estate Agents, which is a trading name of Stockport Residential Ltd, for themselves and for the vendors or lessors of this property whose agents they are give notice that: (1) all measurements are approximate and any plans provided are not to scale; (2) the particulars are set out as a general outline only for the guidance of intending purchasers or lessors, and do not constitute, nor constitute part of, an offer or contract; (3) we have not tested any apparatus, equipment, fixtures, fittings or services, and so cannot verify that they are in working order or fit for purpose; (4) solicitors should confirm moveable items described in these particulars are, in fact, included in the sale since circumstances change during marketing or negotiations.

T709 Printed by Ravensworth 01670 713330